

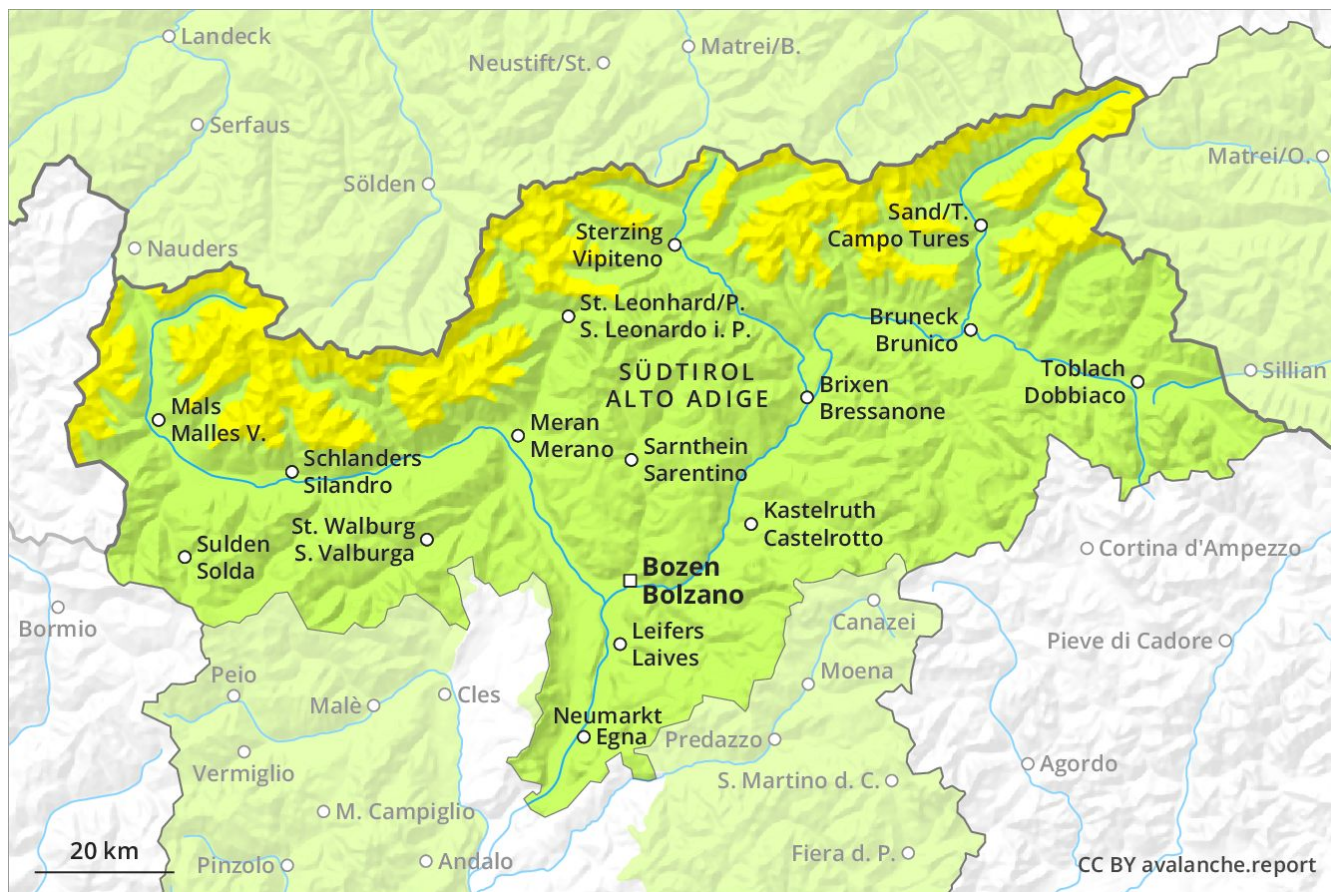
# Avalanche Forecast

## Friday 29 03 2019

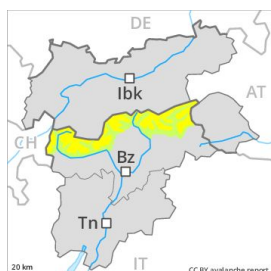
Published 28 03 2019, 17:00



Avalanche.report



## Danger Level 2 - Moderate



**Tendency: Decreasing avalanche danger**  
 on Saturday 30 03 2019



Wind-drifted  
 snow



Persistent  
 weak layer



### Wind slabs at high altitudes and in high Alpine regions.

The wind slabs of the last few days can still be released in some cases, in particular adjacent to ridgelines and in gullies and bowls. The prevalence of avalanche prone locations will increase with altitude. These avalanche prone locations are rather rare and are easy to recognise. Avalanches can additionally in very isolated cases be released in deeper layers in particular in areas where the snow cover is rather shallow. These avalanche prone locations are to be found in particular in extremely steep terrain above approximately 2200 m. As a consequence of solar radiation individual dry and moist avalanches are possible as the day progresses, but they can reach medium size.

### Snowpack

The sometimes storm force wind has transported the fresh and old snow. Fresh wind slabs are clearly recognisable. Over a wide area wind slabs are lying on a hard crust. The old snowpack will be generally stable. Weak layers in the lower part of the snowpack can still be released in very isolated cases especially on steep, little used shady slopes. The surface of the snowpack will freeze to form a strong crust and will soften during the day.

### Tendency

The avalanche conditions are favourable.

## Danger Level 1 - Low



**Tendency: Constant avalanche danger** →  
on Saturday 30 03 2019



Wind-drifted  
snow



2400m

### The weather will be mostly sunny.

The more recent wind slabs can still be released in some cases, especially in gullies and bowls. The avalanche prone locations are easy to recognise. Restraint should be exercised because avalanches can sweep people along and give rise to falls. In steep terrain there is a danger of falling on the hard snow surface. A clear night will be followed in the early morning by favourable conditions, but the danger of wet avalanches will increase later.

### Snowpack

**Danger patterns**

dp 10: springtime scenario

The weather will be mostly sunny. The surface of the snowpack will freeze to form a strong crust and will soften during the day. This applies on steep sunny slopes below approximately 2800 m. In some cases relatively hard layers of snow are lying on a weakly bonded old snowpack.

### Tendency

The avalanche conditions are favourable.