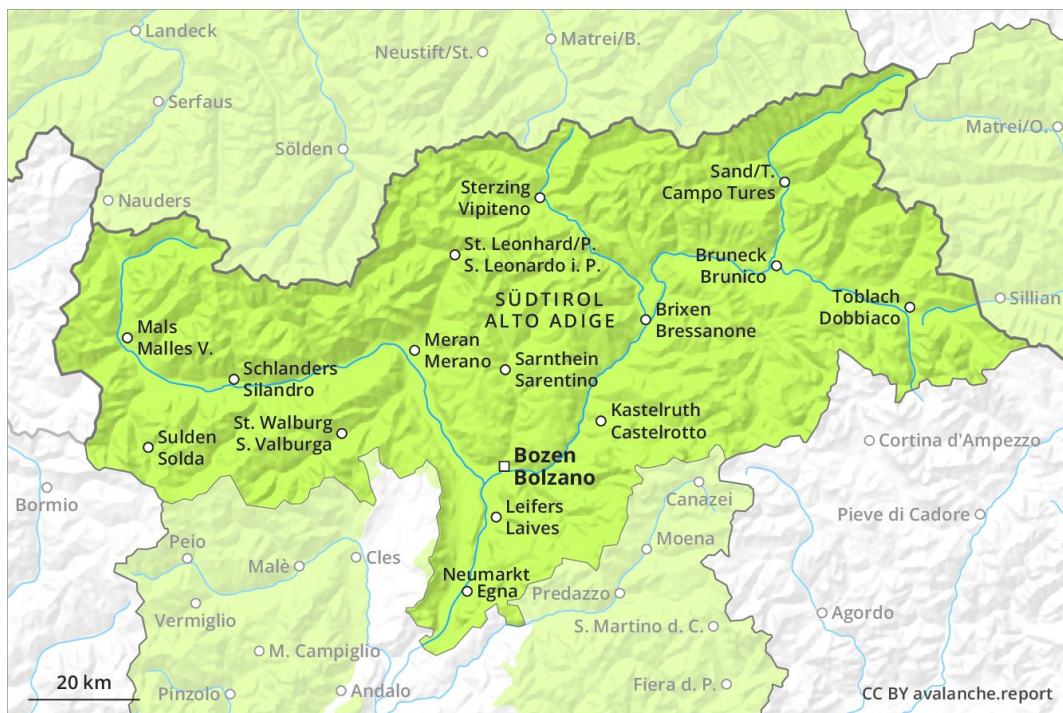
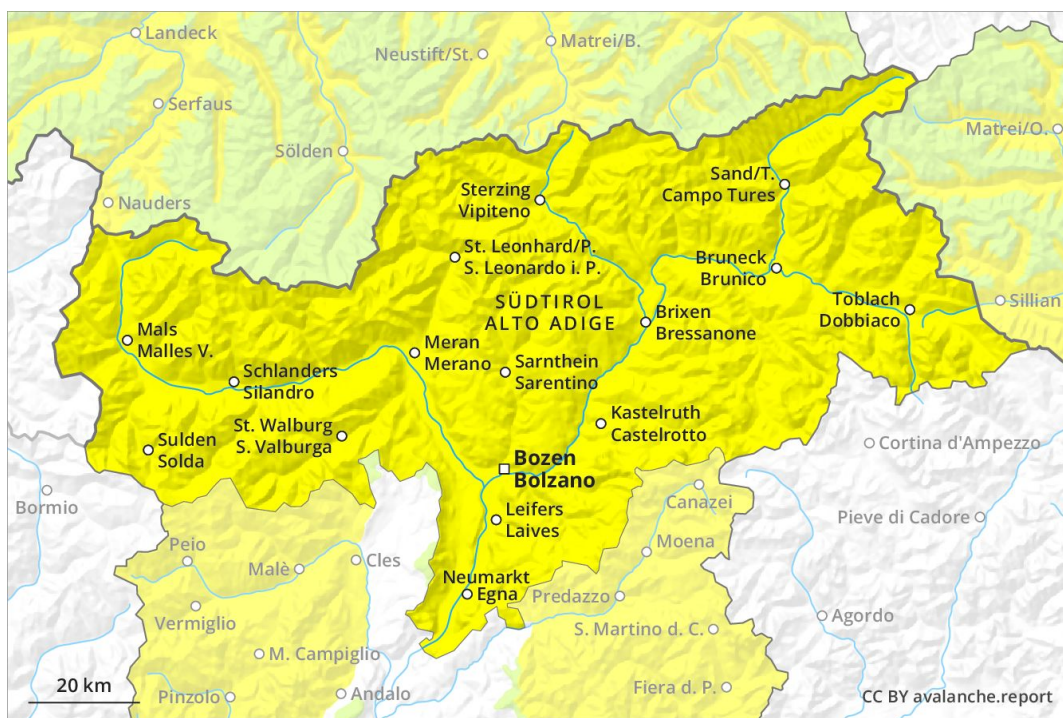




AM



PM



Danger Level 2 - Moderate

AM:



Tendency: Constant avalanche danger →
 on Sunday 31 03 2019



Wind-drifted
 snow



2400m

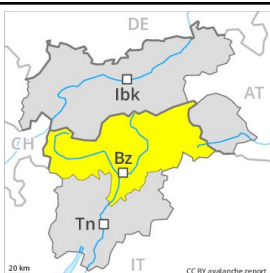


Persistent
 weak layer



2200m

PM:



Tendency: Constant avalanche danger →
 on Sunday 31 03 2019



Wet snow



3000m

The conditions in the morning are generally favourable.

More recent wind slabs can be released in isolated cases in particular on very steep shady slopes above approximately 2400 m. In high Alpine regions the likelihood of avalanches being released is greater. Here avalanche prone locations are more prevalent. Dry avalanches can additionally be released in near-ground layers in very isolated cases. These avalanche prone locations are to be found in particular on very steep, little used northeast, north and northeast facing slopes above approximately 2200 m. As a consequence of solar radiation moist and wet avalanches are possible as the day progresses, but they can reach medium size. Backcountry tours and off-piste skiing should be started early and concluded timely.

Snowpack

The old snowpack will be generally stable. The mostly small wind slabs of the last few days have bonded quite well with the old snowpack in particular on steep sunny slopes below approximately 2600 m. They are to be avoided as far as possible on steep shady slopes and in high Alpine regions. Especially adjacent to ridgelines and in gullies and bowls: Weak layers in the lower part of the snowpack can still be released in very isolated cases on steep, little used shady slopes.

Tendency

Gradual increase in danger of moist and wet avalanches as a consequence of warming during the day and solar radiation.