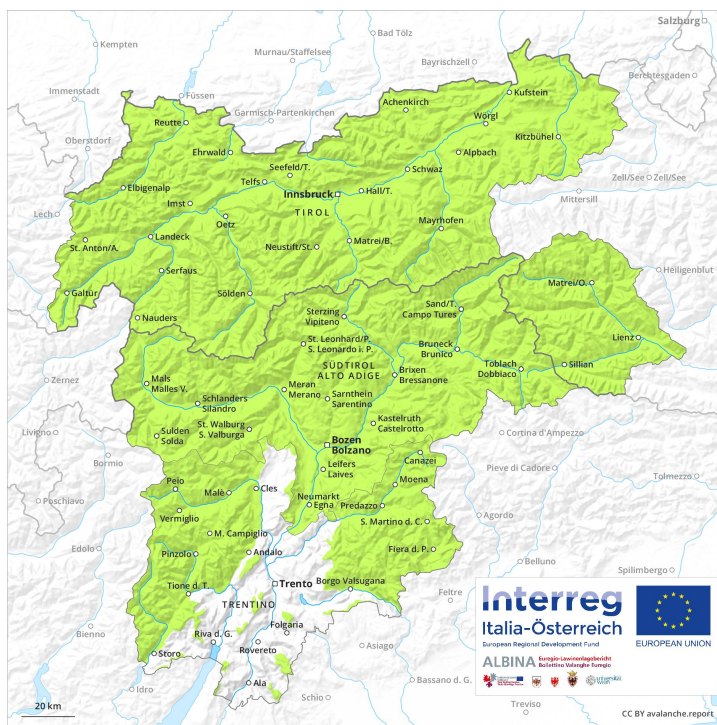
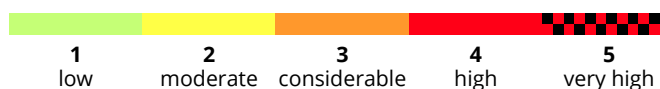
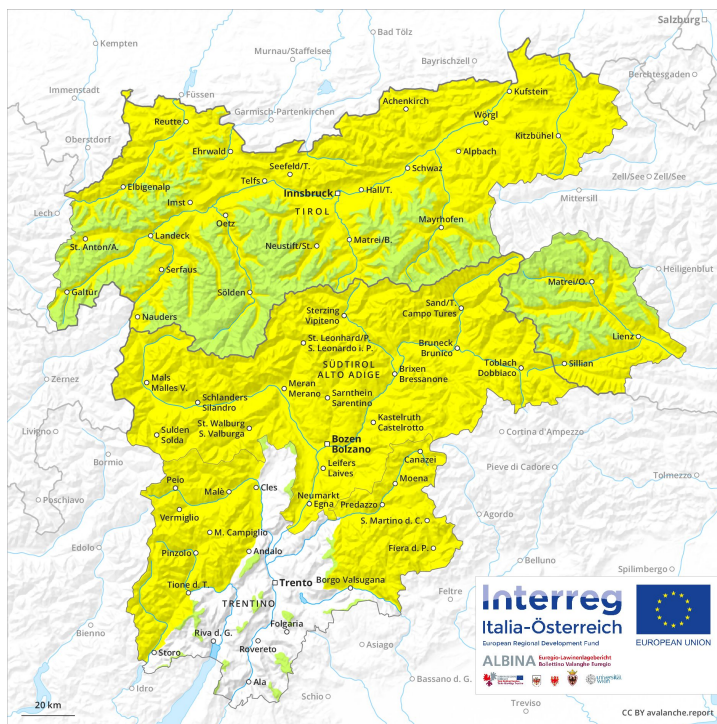




### AM



### PM



## Danger Level 2 - Moderate

**AM:**



**Tendency: Constant avalanche danger** →  
 on Sunday 31 03 2019

**PM:**



**Tendency: Constant avalanche danger** →  
 on Sunday 31 03 2019



Wet snow



2600m



Gliding snow



2600m

A clear night will be followed in the early morning by quite favourable avalanche conditions generally, but the danger of wet and gliding avalanches will increase later.

The avalanche conditions are spring-like. In the late morning a low avalanche danger will be encountered over a wide area. In steep terrain there is a danger of falling on the hard snow surface, caution is to be exercised on steep sunny slopes.

Midday and afternoon:

As a consequence of warming during the day and solar radiation there will be an increase in the danger of gliding avalanches and wet snow slides to level 2 (moderate). The avalanche prone locations are to be found in particular on very steep sunny slopes below approximately 2600 m.

### Snowpack

**Danger patterns**

dp 10: springtime scenario

dp 2: gliding snow

The old snowpack will be stable over a wide area. The wind slabs of the last few days have bonded well with the old snowpack. Outgoing longwave radiation during the night will be good. The surface of the snowpack will freeze to form a strong crust and will soften during the day. This applies in all aspects at intermediate altitudes as well as on sunny slopes below approximately 2800 m. At low altitude hardly any snow is lying.

### Tendency

The backcountry and freeriding conditions remain favourable. Increase in danger of wet and gliding avalanches as the day progresses.

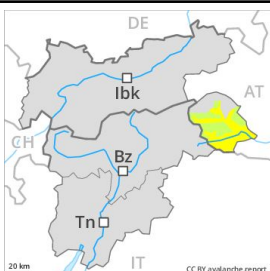
## Danger Level 2 - Moderate

**AM:**



**Tendency: Constant avalanche danger** →  
on Sunday 31 03 2019

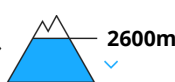
**PM:**



**Tendency: Constant avalanche danger** →  
on Sunday 31 03 2019



Wet snow



A clear night will be followed in the early morning by quite favourable avalanche conditions generally, but the danger of wet avalanches will increase later.

The avalanche conditions are spring-like. In the late morning a low avalanche danger will be encountered over a wide area. In steep terrain there is a danger of falling on the hard snow surface, caution is to be exercised on steep sunny slopes.

Midday and afternoon:

As a consequence of warming during the day and solar radiation there will be an increase in the danger of moist and wet snow slides to level 2 (moderate). The avalanche prone locations are to be found in particular on very steep sunny slopes below approximately 2600 m.

## Snowpack

**Danger patterns**

dp 10: springtime scenario

The old snowpack will be stable over a wide area. The wind slabs of the last few days have bonded well with the old snowpack. Outgoing longwave radiation during the night will be good. The surface of the snowpack will freeze to form a strong crust and will soften during the day. This applies in all aspects at intermediate altitudes as well as on sunny slopes below approximately 3000 m. At low altitude hardly any snow is lying.

## Tendency

The backcountry and freeriding conditions remain favourable. Increase in danger of wet snow slides as the day progresses.

## Danger Level 2 - Moderate

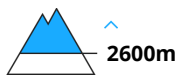
**AM:**



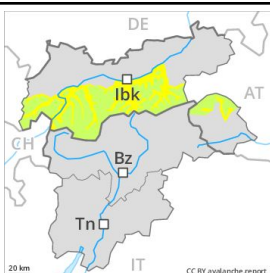
**Tendency: Constant avalanche danger** →  
 on Sunday 31 03 2019



Wind-drifted snow



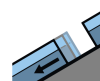
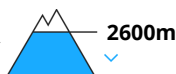
**PM:**



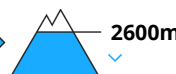
**Tendency: Constant avalanche danger** →  
 on Sunday 31 03 2019



Wet snow



Gliding snow



In the early morning a low avalanche danger will be encountered over a wide area. As the day progresses as a consequence of warming during the day and solar radiation there will be an increase in the avalanche danger.

The no longer entirely fresh wind slabs of the last few days can be released by a single winter sport participant in isolated cases on very steep shady slopes above approximately 2600 m. Individual avalanche prone locations are to be found in particular adjacent to ridgelines and in pass areas. In high Alpine regions avalanche prone locations are a little more prevalent. The avalanche prone locations are easy to recognise. Mostly the avalanches are only small. Apart from the danger of being buried, restraint should be exercised in particular in view of the danger of avalanches sweeping people along and giving rise to falls.

Midday and afternoon:

As a consequence of warming during the day and solar radiation there will be an increase in the danger of gliding avalanches and wet snow slides to level 2 (moderate). The avalanche prone locations are to be found in particular on very steep sunny slopes below approximately 2600 m.

## Snowpack

**Danger patterns**

dp 10: springtime scenario

dp 6: cold, loose snow and wind

The no longer entirely fresh wind slabs of the last few days have bonded quite well with the old snowpack. They are now only very rarely prone to triggering. Outgoing longwave radiation during the night will be good. The surface of the snowpack will freeze to form a strong crust and will soften during the day. This applies in all aspects at intermediate altitudes as well as on sunny slopes below approximately 2800 m. At low altitude hardly any snow is lying. The old snowpack will be stable over a wide area.



## Tendency

The backcountry and freeriding conditions remain favourable. Increase in danger of wet and gliding avalanches as the day progresses.



## Danger Level 2 - Moderate

**AM:**



**Tendency: Constant avalanche danger** →  
 on Sunday 31 03 2019



Wind-drifted snow



2200m

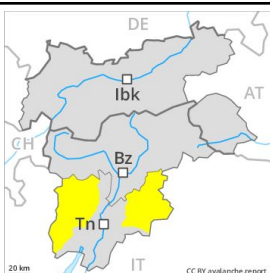


Persistent weak layer



2200m

**PM:**



**Tendency: Constant avalanche danger** →  
 on Sunday 31 03 2019



Wet snow



The conditions are spring-like.

Dry avalanches can in very isolated cases be released in near-ground layers in particular in areas where the snow cover is rather shallow. These avalanche prone locations are to be found in particular on very steep, little used northeast, north and northeast facing slopes above approximately 2200 m. As a consequence of solar radiation moist and wet avalanches are possible as the day progresses, but they can reach medium size.

### Snowpack

The old snowpack will be generally stable. The mostly small wind slabs of the last few days have bonded quite well with the old snowpack in particular on steep sunny slopes. They are to be avoided as far as possible on steep shady slopes. Especially gullies and bowls: Weak layers in the lower part of the snowpack can still be released in very isolated cases on steep, little used shady slopes.

### Tendency

Gradual increase in danger of moist and wet avalanches as a consequence of warming during the day and solar radiation.

## Danger Level 2 - Moderate

**AM:**



**Tendency: Constant avalanche danger** →  
 on Sunday 31 03 2019



Wind-drifted snow



2400m

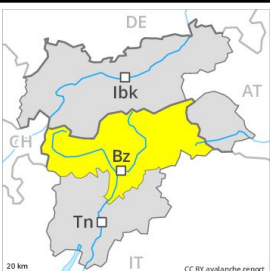


Persistent weak layer



2200m

**PM:**



**Tendency: Constant avalanche danger** →  
 on Sunday 31 03 2019



Wet snow



3000m

The conditions in the morning are generally favourable.

More recent wind slabs can be released in isolated cases in particular on very steep shady slopes above approximately 2400 m. In high Alpine regions the likelihood of avalanches being released is greater. Here avalanche prone locations are more prevalent. Dry avalanches can additionally be released in near-ground layers in very isolated cases. These avalanche prone locations are to be found in particular on very steep, little used northeast, north and northeast facing slopes above approximately 2200 m. As a consequence of solar radiation moist and wet avalanches are possible as the day progresses, but they can reach medium size. Backcountry tours and off-piste skiing should be started early and concluded timely.

### Snowpack

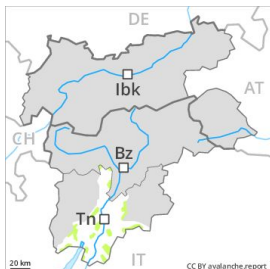
The old snowpack will be generally stable. The mostly small wind slabs of the last few days have bonded quite well with the old snowpack in particular on steep sunny slopes below approximately 2600 m. They are to be avoided as far as possible on steep shady slopes and in high Alpine regions. Especially adjacent to ridgelines and in gullies and bowls: Weak layers in the lower part of the snowpack can still be released in very isolated cases on steep, little used shady slopes.

### Tendency

Gradual increase in danger of moist and wet avalanches as a consequence of warming during the day and solar radiation.

## Danger Level 1 - Low

**AM:**



**Tendency: Constant avalanche danger** →  
 on Sunday 31 03 2019



**PM:**



**Tendency: Constant avalanche danger** →  
 on Sunday 31 03 2019



In the Etschtal and in neighbouring regions hardly any snow is lying on northwest and northeast facing slopes.

From a snow sport perspective, insufficient snow is lying.

The avalanche conditions are spring-like. In the late morning a low avalanche danger will persist in some regions. In steep terrain there is a danger of falling on the hard snow surface.

Midday and afternoon: As a consequence of warming and solar radiation a low danger of moist and wet snow slides will be encountered in some regions.

### Snowpack

The surface of the snowpack will soften during the day.

### Tendency

The avalanche conditions are favourable.