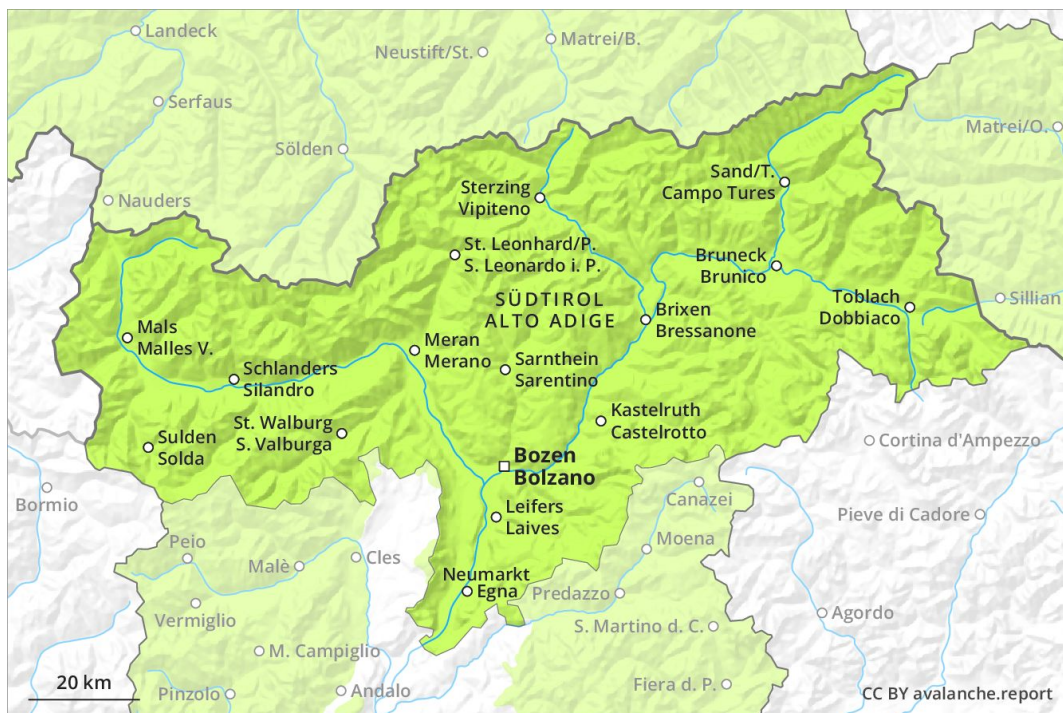
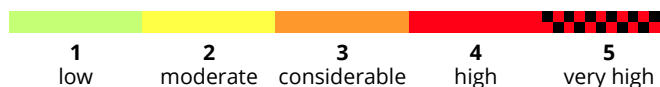
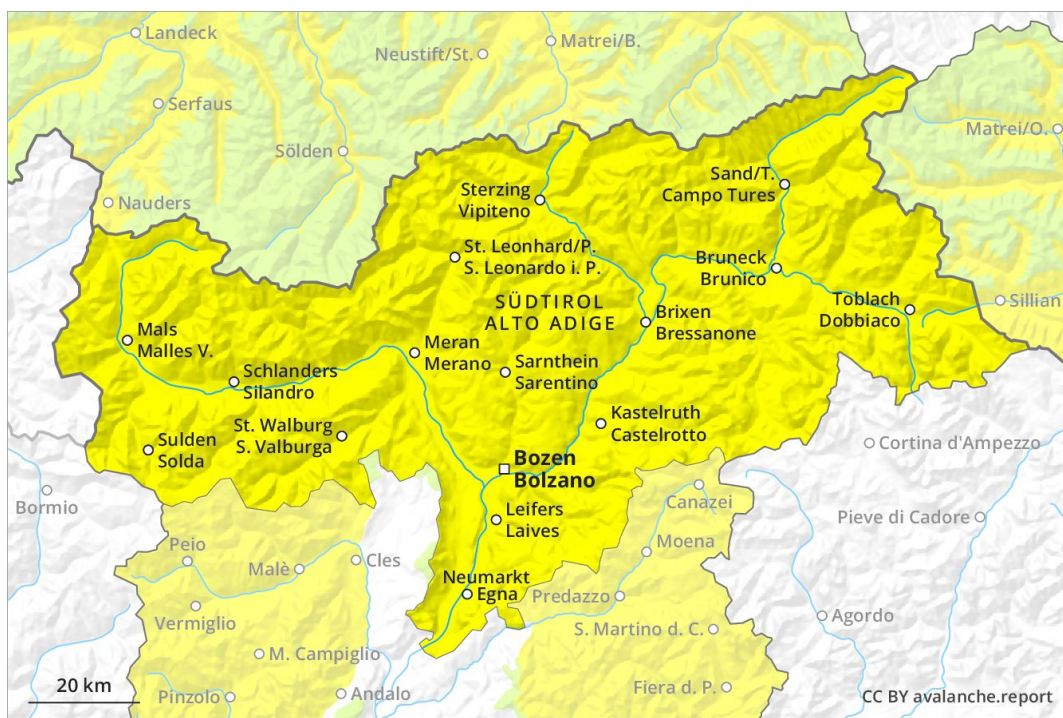


AM



PM



Danger Level 2 - Moderate

AM:



Tendency: Increasing avalanche danger
 on Tuesday 02 04 2019



Wind-drifted
 snow



2400m

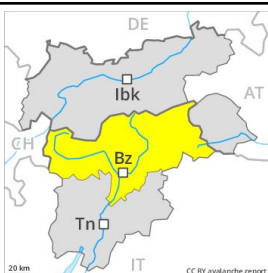


Persistent
 weak layer



2200m

PM:



Tendency: Increasing avalanche danger
 on Tuesday 02 04 2019



Wet snow



3000m

As a consequence of warming and solar radiation a sometimes unfavourable avalanche situation will persist in some regions.

In high Alpine regions the avalanche prone locations are more prevalent. The old wind slabs can only be released by large loads in most cases. Dry avalanches can additionally be released in near-ground layers in very isolated cases. These avalanche prone locations are to be found in particular on very steep, little used northeast, north and northeast facing slopes above approximately 2200 m. As a consequence of warming during the day and solar radiation moist and wet avalanches are possible as the day progresses, but they can reach medium size. Backcountry tours should be concluded timely.

Snowpack

The old snowpack will be stable over a wide area. The older wind slabs are to be avoided as far as possible on steep shady slopes and in high Alpine regions. Especially adjacent to ridgelines and in gullies and bowls: Weak layers in the lower part of the snowpack can still be released in very isolated cases on steep, little used shady slopes. The surface of the snowpack will only just freeze and will soften earlier than the day before. The weather will be mostly sunny over a wide area. The snowpack will be moist at intermediate and high altitudes.

Tendency

The weather will be cloudy over a wide area. The surface of the snowpack will freeze to form a strong crust only at high altitudes.