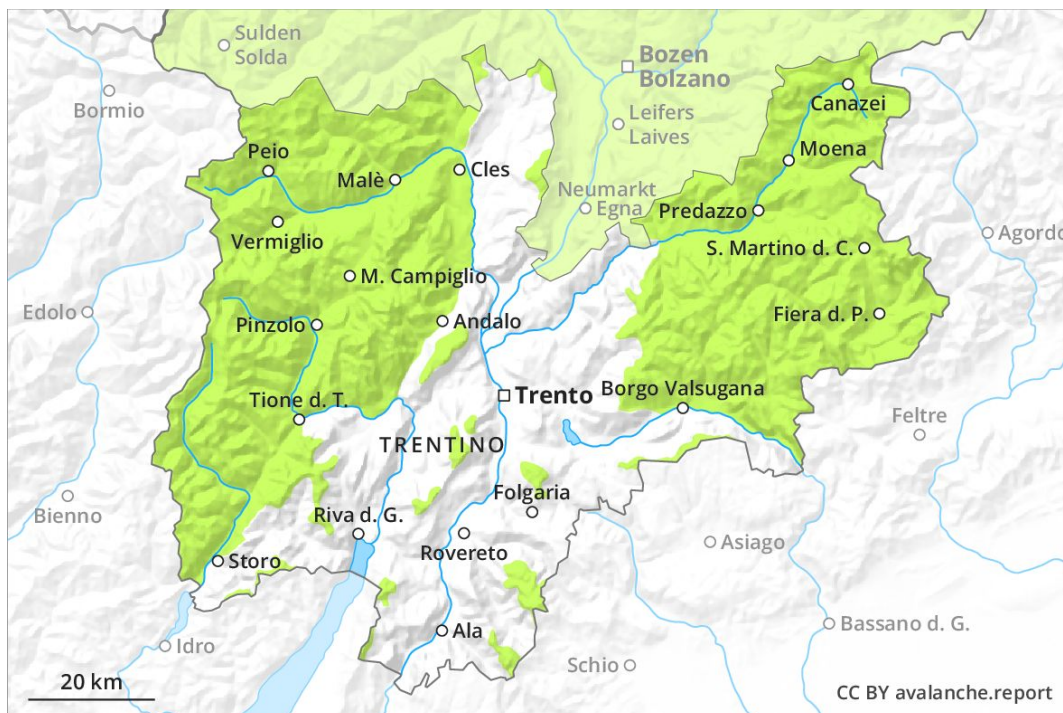
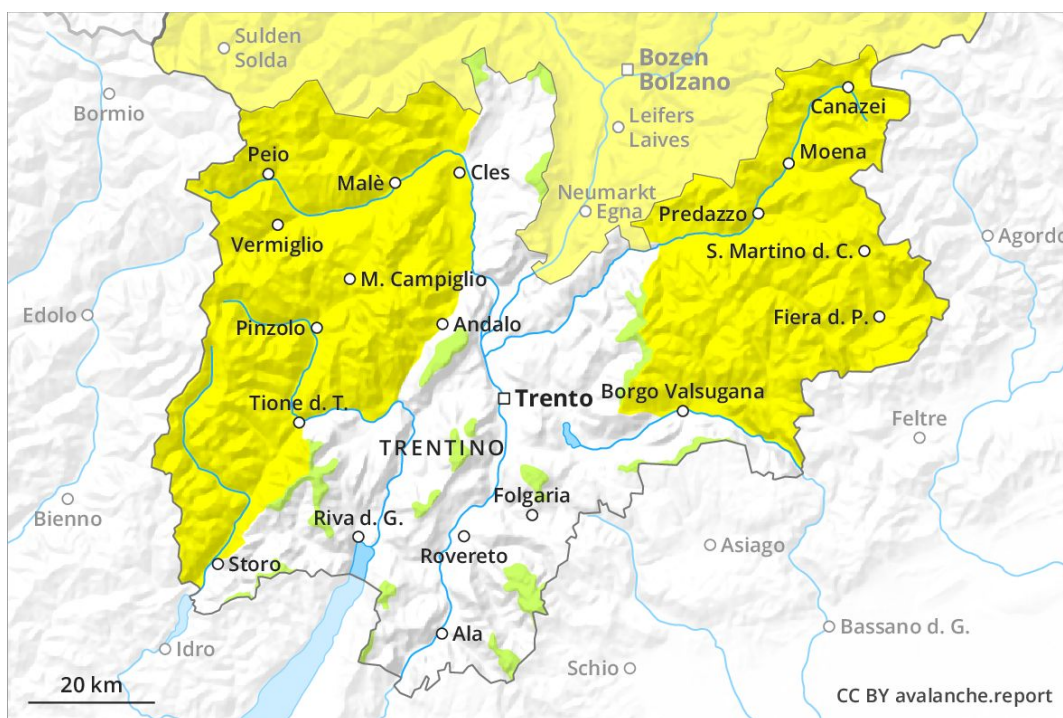


### AM



### PM



## Danger Level 2 - Moderate

**AM:**



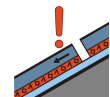
**Tendency: Constant avalanche danger** →  
 on Tuesday 02 04 2019



Wind-drifted snow



2200m

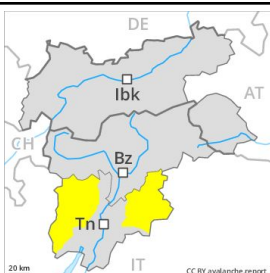


Persistent weak layer



2200m

**PM:**



**Tendency: Constant avalanche danger** →  
 on Tuesday 02 04 2019



Wet snow



The conditions are spring-like.

Dry avalanches can in very isolated cases be released in near-ground layers in particular in areas where the snow cover is rather shallow. These avalanche prone locations are to be found in particular on very steep, little used northeast, north and northeast facing slopes above approximately 2200 m. As a consequence of solar radiation moist and wet avalanches are possible as the day progresses, but they can reach medium size.

### Snowpack

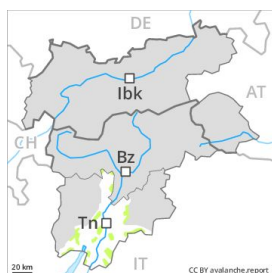
The old snowpack will be generally stable. The mostly small wind slabs of the last few days have bonded quite well with the old snowpack in particular on steep sunny slopes. They are to be avoided as far as possible on steep shady slopes. Especially gullies and bowls: Weak layers in the lower part of the snowpack can still be released in very isolated cases on steep, little used shady slopes.

### Tendency

Gradual increase in danger of moist and wet avalanches as a consequence of warming during the day and solar radiation.

## Danger Level 1 - Low

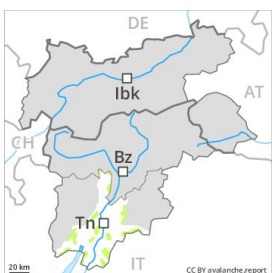
**AM:**



**Tendency: Constant avalanche danger** →  
 on Tuesday 02 04 2019



**PM:**



**Tendency: Constant avalanche danger** →  
 on Tuesday 02 04 2019



In the Etschtal and in neighbouring regions hardly any snow is lying on northwest and northeast facing slopes.

From a snow sport perspective, insufficient snow is lying.

The avalanche conditions are spring-like. In the late morning a low avalanche danger will persist in some regions. In steep terrain there is a danger of falling on the hard snow surface.

Midday and afternoon: As a consequence of warming and solar radiation a low danger of moist and wet snow slides will be encountered in some regions.

### Snowpack

The surface of the snowpack will soften during the day.

### Tendency

The avalanche conditions are favourable.