

# Avalanche Forecast

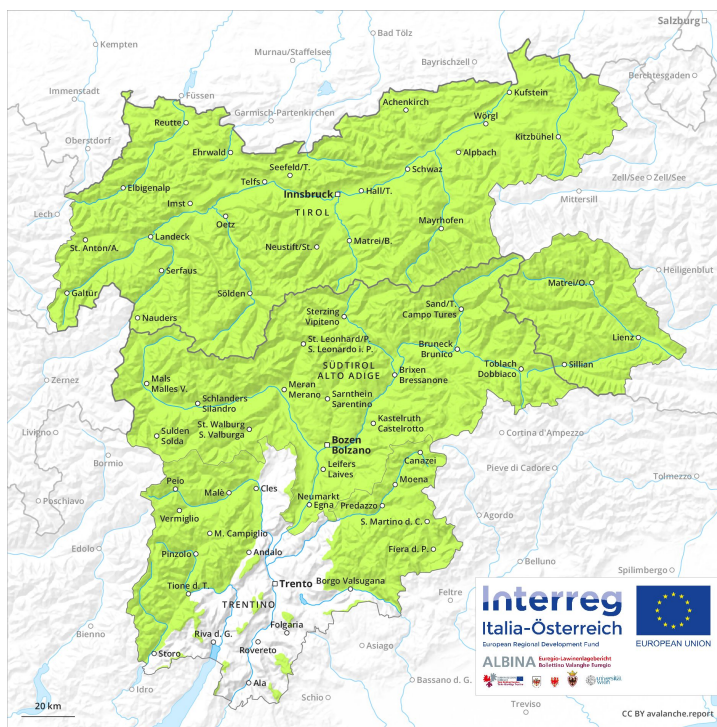
## Monday 01 04 2019

Published 31 03 2019, 17:00

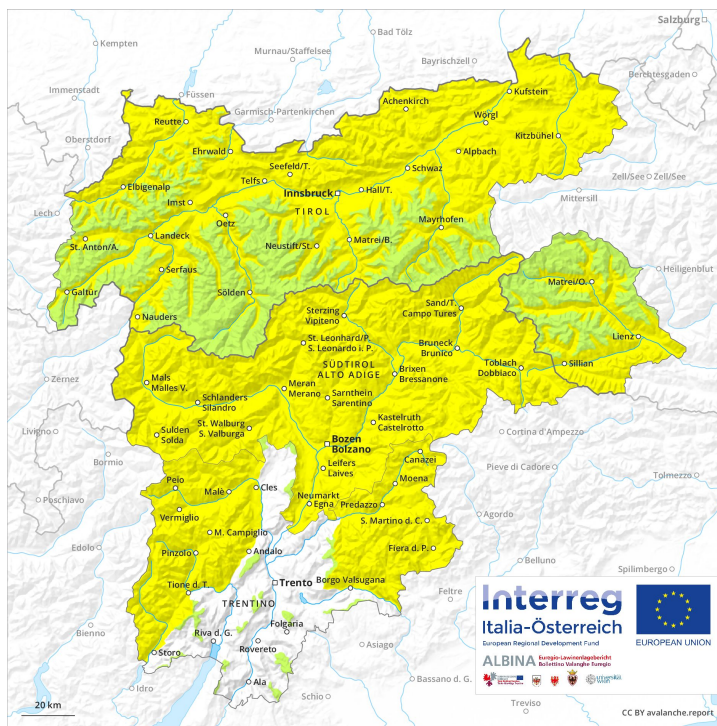


Avalanche.report

### AM



### PM



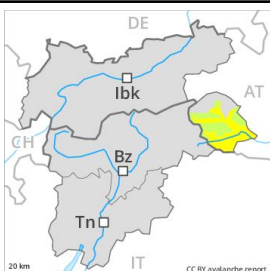
## Danger Level 2 - Moderate

**AM:**



**Tendency: Constant avalanche danger** →  
on Tuesday 02 04 2019

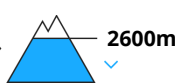
**PM:**



**Tendency: Constant avalanche danger** →  
on Tuesday 02 04 2019



Wet snow



A clear night will be followed in the early morning by quite favourable avalanche conditions generally, but the danger of wet avalanches will increase later.

The avalanche conditions are spring-like. In the late morning a low avalanche danger will be encountered over a wide area. In steep terrain there is a danger of falling on the hard snow surface, caution is to be exercised on steep sunny slopes.

Midday and afternoon:

As a consequence of warming during the day and solar radiation there will be only a slight increase in the danger of moist and wet snow slides to level 2 (moderate). The avalanche prone locations are to be found in particular on very steep sunny slopes below approximately 2600 m.

## Snowpack

**Danger patterns**

dp 10: springtime scenario

The old snowpack will be stable over a wide area. The wind slabs of last week have bonded well with the old snowpack. Outgoing longwave radiation during the night will be good. The surface of the snowpack will freeze to form a strong crust and will soften during the day. This applies in all aspects at intermediate altitudes as well as on sunny slopes below approximately 3000 m. At low altitude hardly any snow is lying.

## Tendency

The backcountry and freeriding conditions remain favourable. Increase in danger of wet snow slides as the day progresses.

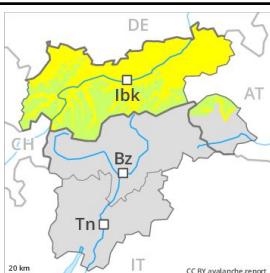
## Danger Level 2 - Moderate

**AM:**



**Tendency: Constant avalanche danger** →  
 on Tuesday 02 04 2019

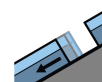
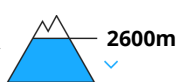
**PM:**



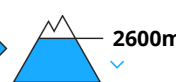
**Tendency: Constant avalanche danger** →  
 on Tuesday 02 04 2019



Wet snow



Gliding snow



A clear night will be followed in the early morning by quite favourable avalanche conditions generally, but the danger of wet and gliding avalanches will increase later.

The avalanche conditions are spring-like. In the late morning a low avalanche danger will be encountered over a wide area. In steep terrain there is a danger of falling on the hard snow surface, caution is to be exercised on steep sunny slopes.

Midday and afternoon:

As a consequence of warming during the day and solar radiation there will be only a slight increase in the danger of wet and gliding avalanches to level 2 (moderate). The avalanche prone locations are to be found in particular on very steep sunny slopes below approximately 2600 m.

### Snowpack

**Danger patterns**

dp 10: springtime scenario

dp 2: gliding snow

The old snowpack will be stable over a wide area. The wind slabs of last week have bonded well with the old snowpack. Outgoing longwave radiation during the night will be good. The surface of the snowpack will freeze to form a strong crust and will soften during the day. This applies in all aspects at intermediate altitudes as well as on steep sunny slopes in particular below approximately 2800 m. At low altitude hardly any snow is lying.

### Tendency

The backcountry and freeriding conditions remain favourable. Increase in danger of wet and gliding avalanches as the day progresses.

## Danger Level 2 - Moderate

**AM:**



**Tendency: Increasing avalanche danger**  
 on Tuesday 02 04 2019



Wind-drifted  
 snow



2400m

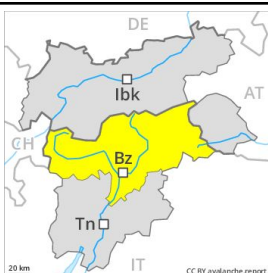


Persistent  
 weak layer



2200m

**PM:**



**Tendency: Increasing avalanche danger**  
 on Tuesday 02 04 2019



Wet snow



3000m

As a consequence of warming and solar radiation a sometimes unfavourable avalanche situation will persist in some regions.

In high Alpine regions the avalanche prone locations are more prevalent. The old wind slabs can only be released by large loads in most cases. Dry avalanches can additionally be released in near-ground layers in very isolated cases. These avalanche prone locations are to be found in particular on very steep, little used northeast, north and northeast facing slopes above approximately 2200 m. As a consequence of warming during the day and solar radiation moist and wet avalanches are possible as the day progresses, but they can reach medium size. Backcountry tours should be concluded timely.

### Snowpack

The old snowpack will be stable over a wide area. The older wind slabs are to be avoided as far as possible on steep shady slopes and in high Alpine regions. Especially adjacent to ridgelines and in gullies and bowls: Weak layers in the lower part of the snowpack can still be released in very isolated cases on steep, little used shady slopes. The surface of the snowpack will only just freeze and will soften earlier than the day before. The weather will be mostly sunny over a wide area. The snowpack will be moist at intermediate and high altitudes.

### Tendency

The weather will be cloudy over a wide area. The surface of the snowpack will freeze to form a strong crust only at high altitudes.

## Danger Level 2 - Moderate

**AM:**



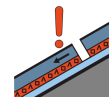
**Tendency: Constant avalanche danger** →  
 on Tuesday 02 04 2019



Wind-drifted snow



2200m

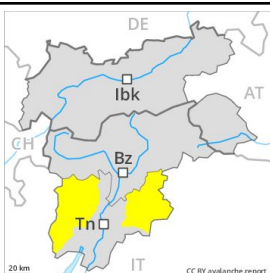


Persistent weak layer



2200m

**PM:**



**Tendency: Constant avalanche danger** →  
 on Tuesday 02 04 2019



Wet snow



The conditions are spring-like.

Dry avalanches can in very isolated cases be released in near-ground layers in particular in areas where the snow cover is rather shallow. These avalanche prone locations are to be found in particular on very steep, little used northeast, north and northeast facing slopes above approximately 2200 m. As a consequence of solar radiation moist and wet avalanches are possible as the day progresses, but they can reach medium size.

### Snowpack

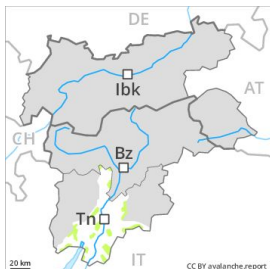
The old snowpack will be generally stable. The mostly small wind slabs of the last few days have bonded quite well with the old snowpack in particular on steep sunny slopes. They are to be avoided as far as possible on steep shady slopes. Especially gullies and bowls: Weak layers in the lower part of the snowpack can still be released in very isolated cases on steep, little used shady slopes.

### Tendency

Gradual increase in danger of moist and wet avalanches as a consequence of warming during the day and solar radiation.

## Danger Level 1 - Low

**AM:**



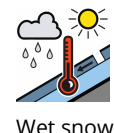
**Tendency: Constant avalanche danger** →  
 on Tuesday 02 04 2019



**PM:**



**Tendency: Constant avalanche danger** →  
 on Tuesday 02 04 2019



In the Etschtal and in neighbouring regions hardly any snow is lying on northwest and northeast facing slopes.

From a snow sport perspective, insufficient snow is lying.

The avalanche conditions are spring-like. In the late morning a low avalanche danger will persist in some regions. In steep terrain there is a danger of falling on the hard snow surface.

Midday and afternoon: As a consequence of warming and solar radiation a low danger of moist and wet snow slides will be encountered in some regions.

### Snowpack

The surface of the snowpack will soften during the day.

### Tendency

The avalanche conditions are favourable.