

Avalanche Forecast

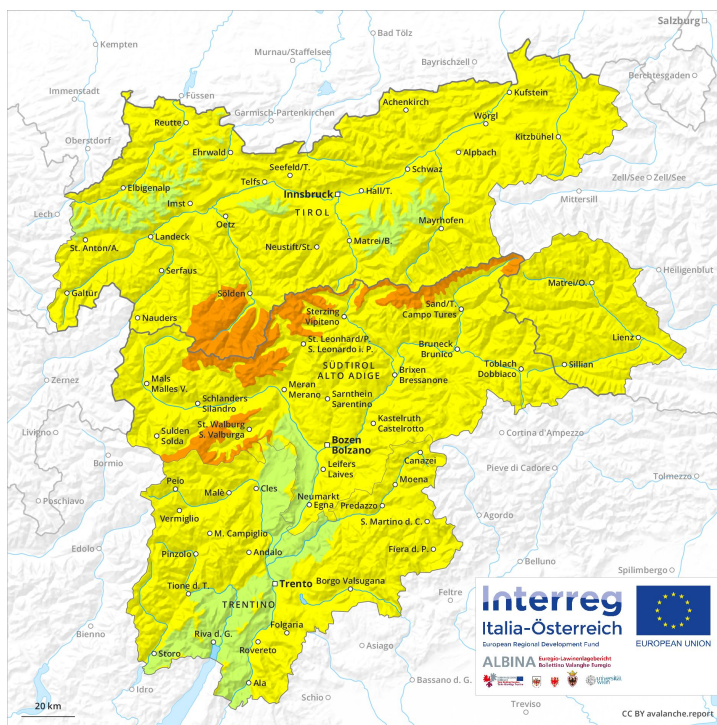
Thursday 04 04 2019

Published 03 04 2019, 17:40

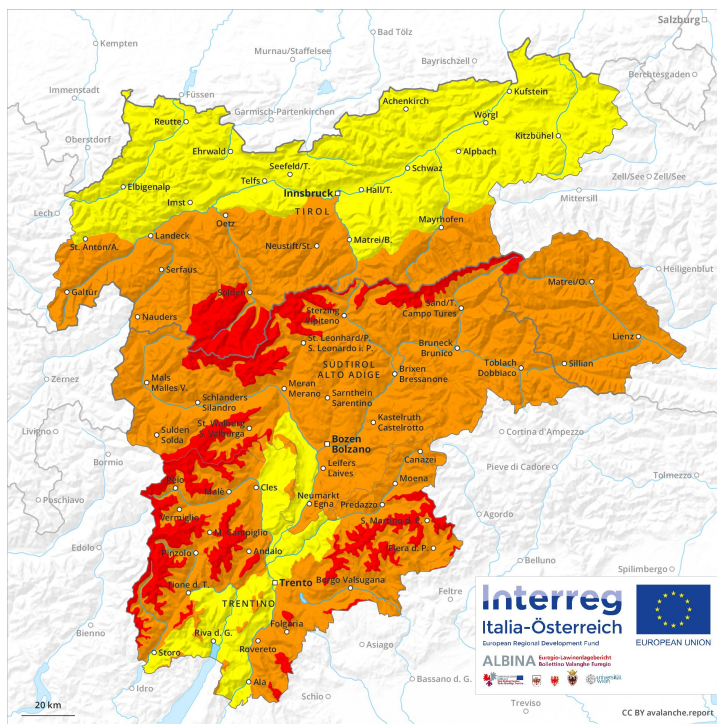


Avalanche.report

AM

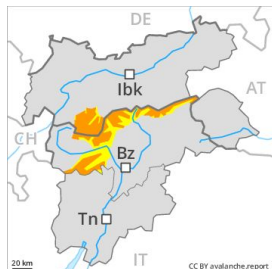


PM



Danger Level 4 - High

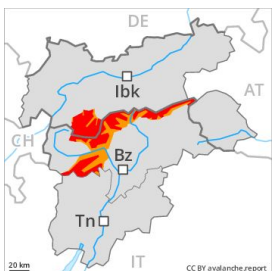
AM:



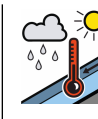
Tendency: Constant avalanche danger →
 on Friday 05 04 2019



PM:



Tendency: Constant avalanche danger →
 on Friday 05 04 2019



Further increase in avalanche danger as the precipitation becomes more intense.

As a consequence of fresh snow and a strong to storm force southerly wind, easily released wind slabs will form in all aspects, in particular above the tree line. The wind slabs are in many cases thick. As the snowfall becomes more intense the prevalence and size of the avalanche prone locations will increase. At high altitudes and in high Alpine regions avalanche prone locations are more prevalent. Medium-sized and, in isolated cases, large natural avalanches are to be expected in particular on wind-loaded slopes. The peak of avalanche activity will be reached during the course of the night probably.

As a consequence of the rain, the likelihood of wet and gliding avalanches being released will increase significantly in all aspects below the tree line. Exposed parts of transportation routes are endangered in isolated cases.

Snowpack

Danger patterns

dp 6: cold, loose snow and wind

dp 3: rain

50 to 70 cm of snow. will fall above approximately 1800 m. Over a wide area strong southerly wind. The fresh wind slabs are lying on soft layers in particular on steep shady slopes. The old snowpack will be stable over a wide area. At low altitude hardly any snow is lying.

Tendency

The avalanche danger will persist. Natural avalanches are still to be expected. Backcountry touring and other off-piste activities call for very extensive experience and great restraint.

Danger Level 4 - High

AM:



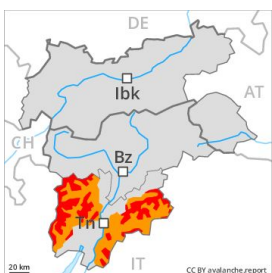
Tendency: Increasing avalanche danger
 on Friday 05 04 2019



Wind-drifted
 snow



PM:



1600m

Tendency: Increasing avalanche danger
 on Friday 05 04 2019



New snow



Wind-drifted
 snow



The avalanche conditions in the morning are mostly favourable. As the snowfall becomes more intense the prevalence and size of the avalanche prone locations will increase in the afternoon. Much of the fresh and wind-drifted snow represent the main danger.

40 to 70 cm of snow, and up to 100 cm in some localities, will fall from late morning above approximately 1500 m. As the precipitation becomes more intense more frequent natural dry avalanches are possible as the day progresses, in particular medium-sized ones. The fresh wind slabs are in some cases quite large and can be released easily. Additionally in some places dry avalanches can also penetrate down to the ground and reach large size.

Snowpack

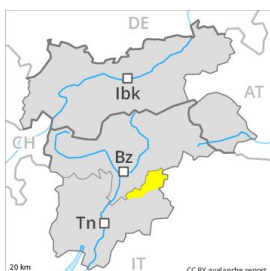
The old snowpack will be generally stable. The mostly small wind slabs of recent weeks have bonded quite well with the old snowpack in particular on steep sunny slopes. Faceted weak layers exist deep in the snowpack on rather lightly snow-covered shady slopes. The fresh snow is bonding only slowly with the old snowpack in particular on shady slopes.

Tendency

Further increase in danger as a consequence of fresh snow and wind.

Danger Level 3 - Considerable

AM:



Tendency: Increasing avalanche danger
 on Friday 05 04 2019

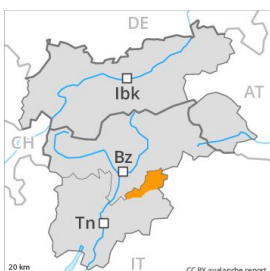


Wind-drifted
 snow



2200m

PM:



Tendency: Increasing avalanche danger
 on Friday 05 04 2019



New snow



1500m



Wind-drifted
 snow



Treeline

The avalanche conditions in the morning are mostly favourable. As the snowfall becomes more intense the prevalence and size of the avalanche prone locations will increase in the afternoon. Much of the fresh and wind-drifted snow represent the main danger.

40 to 70 cm of snow, and even more in some localities, will fall from late morning above approximately 1500 m. As the precipitation becomes more intense more frequent natural dry avalanches are possible as the day progresses, in particular medium-sized ones. The fresh wind slabs are in some cases quite large and can be released easily. Additionally in some places dry avalanches can also penetrate down to the ground and reach large size.

Snowpack

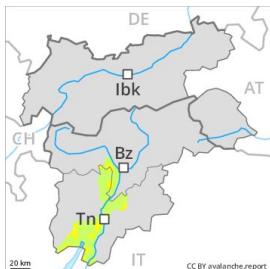
The old snowpack will be generally stable. The mostly small wind slabs of recent weeks have bonded quite well with the old snowpack in particular on steep sunny slopes. Faceted weak layers exist deep in the snowpack on rather lightly snow-covered shady slopes. The fresh snow is bonding only slowly with the old snowpack in particular on shady slopes.

Tendency

Further increase in danger as a consequence of fresh snow and wind.

Danger Level 3 - Considerable

AM:



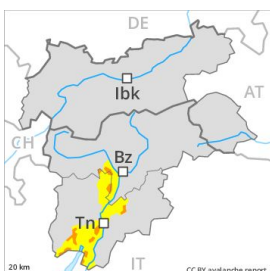
Tendency: Increasing avalanche danger
 on Friday 05 04 2019



Persistent weak layer



PM:



Tendency: Increasing avalanche danger
 on Friday 05 04 2019



New snow



Wind-drifted snow



The fresh snow represents the main danger. As the snowfall becomes more intense the prevalence and size of the avalanche prone locations will increase as the day progresses.

In the Etschtal, in the Cembra Valley and in neighbouring regions thus far only a little snow is lying on north and northeast facing slopes. In steep terrain there is a danger of falling on the hard snow surface. 30 to 60 cm of snow, and even more in some localities, will fall from early morning above approximately 1500 m. As a consequence of the fresh snow more frequent natural avalanches are possible towards the evening, even large ones in isolated cases. In addition the easily released wind slabs must be taken into account.

Snowpack

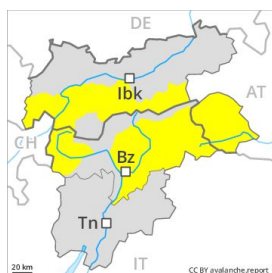
The surface of the snowpack will only just freeze and will already be soft in the early morning. Much of the fresh and wind-drifted snow will become increasingly prone to triggering in all aspects. At low altitude thus far only a little snow is lying.

Tendency

Further increase in avalanche danger as the precipitation becomes more intense. As the day progresses over a wide area danger level 4 (high) will be reached.

Danger Level 3 - Considerable

AM:



Tendency: Constant avalanche danger →
 on Friday 05 04 2019



Wet snow



2200m

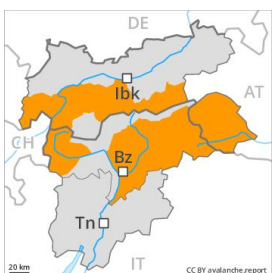


Wind-drifted snow



2200m

PM:



Tendency: Constant avalanche danger →
 on Friday 05 04 2019



Wind-drifted snow



Treeline



Wet snow



Treeline

Significant increase in avalanche danger towards the evening.

Early and late morning: Small to medium-sized wet loose snow avalanches are possible below approximately 2200 m. At elevated altitudes sometimes avalanche prone wind slabs will form. These avalanche prone locations are to be found in particular on very steep shady slopes above approximately 2200 m. At high altitudes and in high Alpine regions the likelihood of avalanches being released is greater. The number and size of avalanche prone locations will increase as the day progresses.

During the day: As a consequence of the rain, the likelihood of gliding avalanches and wet snow slides being released will increase in particular at intermediate altitudes. In addition the danger of dry slab avalanches will increase towards the evening. Especially on very steep shady slopes more frequent medium-sized and, in isolated cases, large natural dry avalanches are possible as the snowfall becomes more intense. The peak of avalanche activity will be reached during the first half of the night probably. In particular in regions neighbouring those that are subject to danger level 4 (high) avalanche prone locations are more prevalent and the danger is greater.

In addition a latent danger of gliding avalanches exists. Backcountry touring and other off-piste activities call for experience in the assessment of avalanche danger.

Snowpack

Danger patterns

dp 6: cold, loose snow and wind

dp 3: rain

30 to 50 cm of snow, and even more in some localities, will fall above approximately 1800 m. The southerly wind will transport the fresh snow significantly. The fresh wind slabs are lying on soft layers in particular on northwest to north to northeast facing aspects above approximately 2200 m. The old snowpack will be stable over a wide area. At low altitude hardly any snow is lying.



Tendency

A few natural avalanches are to be expected. Backcountry touring and other off-piste activities call for very extensive experience and great restraint.



Danger Level 2 - Moderate

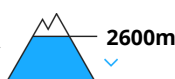
AM:



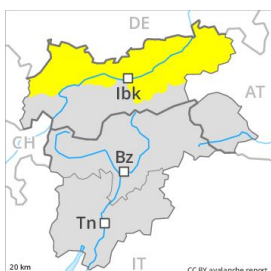
Tendency: Constant avalanche danger →
 on Friday 05 04 2019



Wet snow



PM:



Tendency: Constant avalanche danger →
 on Friday 05 04 2019



Wind-drifted
 snow



Wet snow



Gradual increase in avalanche danger towards the evening.

Small to medium-sized wet loose snow avalanches are possible below approximately 2600 m, especially on east, south and west facing slopes. As a consequence of the rain, the likelihood of gliding avalanches and wet snow slides being released will increase in particular at low and intermediate altitudes.

At elevated altitudes mostly small wind slabs will form. These avalanche prone locations are to be found in particular on very steep shady slopes above approximately 2200 m. The number and size of avalanche prone locations will increase as the day progresses.

In addition a latent danger of gliding avalanches exists.

Snowpack

Danger patterns

dp 6: cold, loose snow and wind

dp 3: rain

10 to 30 cm of snow, and even more in some localities, will fall above approximately 1800 m. The strong wind will transport the fresh snow significantly. The fresh wind slabs are lying on soft layers in particular on northwest to north to northeast facing aspects above approximately 2200 m. The old snowpack will be stable over a wide area. At low altitude hardly any snow is lying.

Tendency

Wet loose snow avalanches are to be expected.