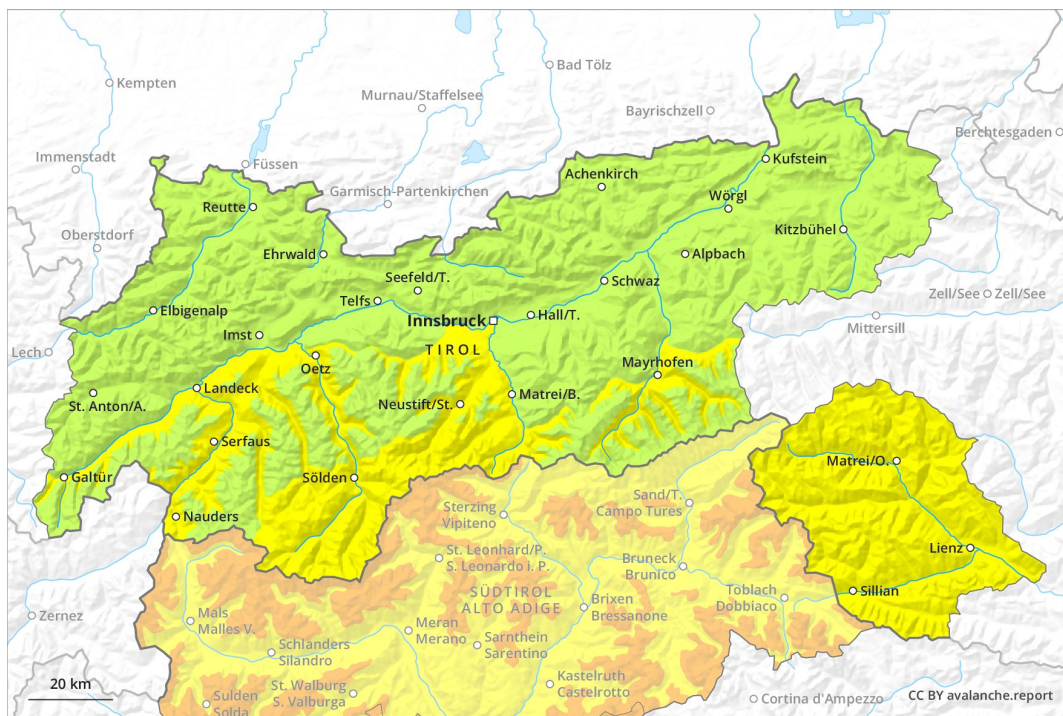
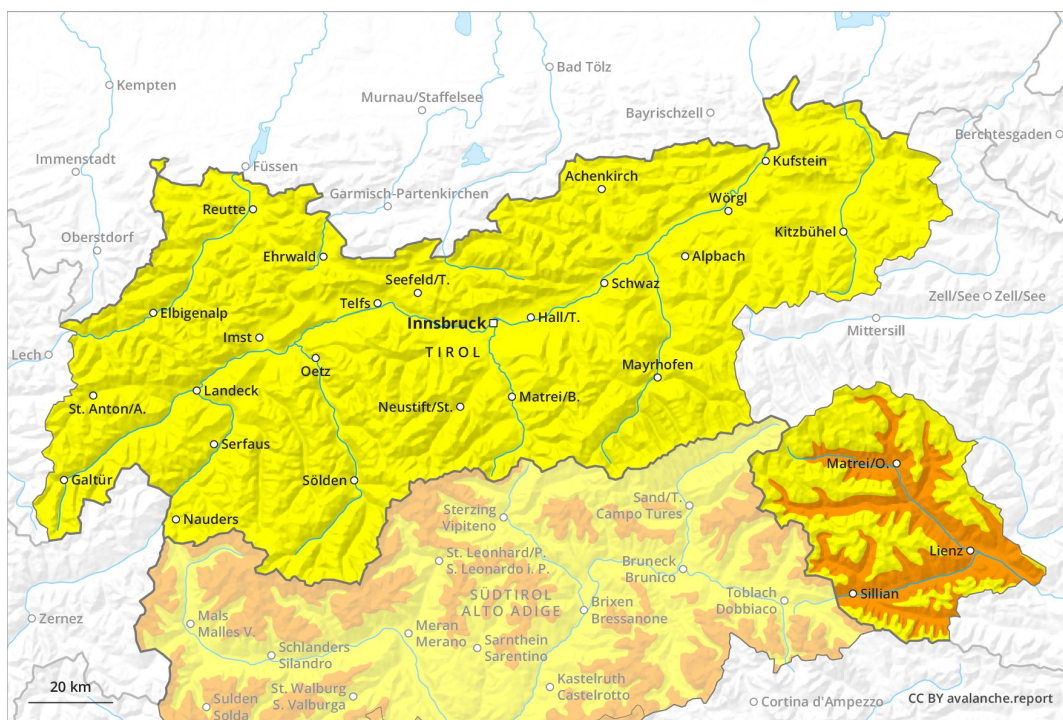


AM



PM



Danger Level 3 - Considerable

AM:



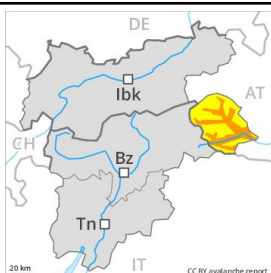
Tendency: Constant avalanche danger →
 on Monday 08 04 2019



Wet snow



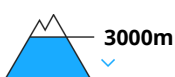
PM:



Tendency: Constant avalanche danger →
 on Monday 08 04 2019



Wet snow



Rapid increase in danger of wet snow slides as the day progresses.

In the late morning the likelihood of wet loose snow avalanches being released will increase quickly. This applies in all aspects below approximately 2000 m as well as on extremely steep sunny slopes at intermediate and high altitudes. A certain danger of wet slab avalanches exists. This applies on very steep shady slopes between approximately 1800 and 2200 m.

In addition a latent danger of gliding avalanches exists. This applies in all aspects below approximately 2000 m as well as on steep sunny slopes below approximately 2600 m, in particular in the north.

The wind slabs of Thursday have bonded quite well with the old snowpack. Individual avalanche prone locations are to be found in particular on very steep shady slopes above approximately 2800 m, caution is to be exercised in particular adjacent to ridgelines.

Snowpack

Danger patterns

dp 10: springtime scenario

dp 2: gliding snow

The surface of the snowpack cooled hardly at all during the overcast night and will already soften in the late morning. This applies on sunny slopes as well as in all aspects below approximately 2000 m. The old snowpack will be wet all the way through at intermediate altitudes. At low altitude hardly any snow is lying.

Tendency

Wet avalanches as the day progresses.

Danger Level 2 - Moderate

AM:



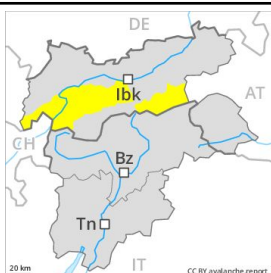
Tendency: Increasing avalanche danger
 on Monday 08 04 2019



Wet snow



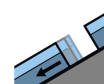
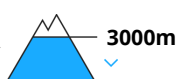
PM:



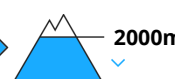
Tendency: Increasing avalanche danger
 on Monday 08 04 2019



Wet snow



Gliding snow



The early morning will see quite favourable avalanche conditions at elevated altitudes. Rapid increase in danger of wet snow slides as the day progresses.

The conditions are spring-like. The early morning will see quite favourable conditions at elevated altitudes. As a consequence of warming during the day and the solar radiation, the likelihood of wet loose snow avalanches being released will increase quickly. This applies in all aspects below approximately 2000 m as well as on extremely steep sunny slopes at intermediate and high altitudes.

In addition a latent danger of gliding avalanches exists. This applies in all aspects below approximately 2000 m as well as on steep sunny slopes below approximately 2600 m.

The wind slabs of Thursday have bonded quite well with the old snowpack. Individual avalanche prone locations are to be found in particular on very steep shady slopes above approximately 2800 m, caution is to be exercised in particular adjacent to ridgelines.

Snowpack

Danger patterns

dp 10: springtime scenario

dp 2: gliding snow

The surface of the snowpack has frozen to form a strong crust only at high altitudes and will already soften in the late morning. This applies on sunny slopes as well as in all aspects below approximately 2000 m. The old snowpack will be wet all the way through at intermediate altitudes. At low altitude hardly any snow is lying.

Tendency

Wet avalanches as the day progresses.

Danger Level 2 - Moderate

AM:



Tendency: Increasing avalanche danger
 on Monday 08 04 2019



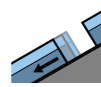
PM:



Tendency: Increasing avalanche danger
 on Monday 08 04 2019



Wet snow



Gliding snow



The early morning will see quite favourable avalanche conditions over a wide area. Rapid increase in danger of wet snow slides as the day progresses.

The conditions are spring-like. The early morning will see quite favourable conditions. As a consequence of warming during the day and the solar radiation, the likelihood of wet loose snow avalanches being released will increase quickly. This applies in all aspects below approximately 2000 m as well as on extremely steep sunny slopes at intermediate and high altitudes.

In addition a latent danger of gliding avalanches exists. This applies in all aspects below approximately 2000 m as well as on steep sunny slopes below approximately 2600 m.

The wind slabs of Thursday have bonded quite well with the old snowpack. Individual avalanche prone locations are to be found in particular on very steep shady slopes above approximately 2800 m, caution is to be exercised in particular adjacent to ridgelines.

Snowpack

Danger patterns

dp 10: springtime scenario

dp 2: gliding snow

The surface of the snowpack has frozen to form a strong crust only at high altitudes and will already soften in the late morning. This applies on sunny slopes as well as in all aspects below approximately 2000 m. The old snowpack will be wet all the way through at intermediate altitudes. At low altitude hardly any snow is lying.

Tendency

Wet avalanches as the day progresses.

Danger Level 2 - Moderate



Tendency: Constant avalanche danger →
 on Monday 08 04 2019



Wet snow



Wind-drifted snow



The fresh wind slabs must be evaluated with care and prudence on very steep shady slopes above approximately 2800 m. Rapid increase in danger of wet snow slides as the day progresses.

The deep wind slabs of Thursday can be released by a single winter sport participant in some cases on very steep shady slopes above approximately 2800 m, caution is to be exercised in particular adjacent to ridgelines.

As a consequence of warming during the day and the solar radiation, the likelihood of wet loose snow avalanches being released will increase quickly. This applies in all aspects below approximately 2000 m as well as on extremely steep sunny slopes at intermediate and high altitudes.

In addition a latent danger of gliding avalanches exists. This applies in all aspects below approximately 2000 m as well as on steep sunny slopes below approximately 2600 m.

Snowpack

Danger patterns

dp 10: springtime scenario

dp 2: gliding snow

The surface of the snowpack is frozen, but not to a significant depth and will already soften in the late morning. This applies on sunny slopes as well as in all aspects below approximately 2000 m. The old snowpack will be wet all the way through at intermediate altitudes. At low altitude hardly any snow is lying.

Tendency

Wet avalanches as the day progresses.