

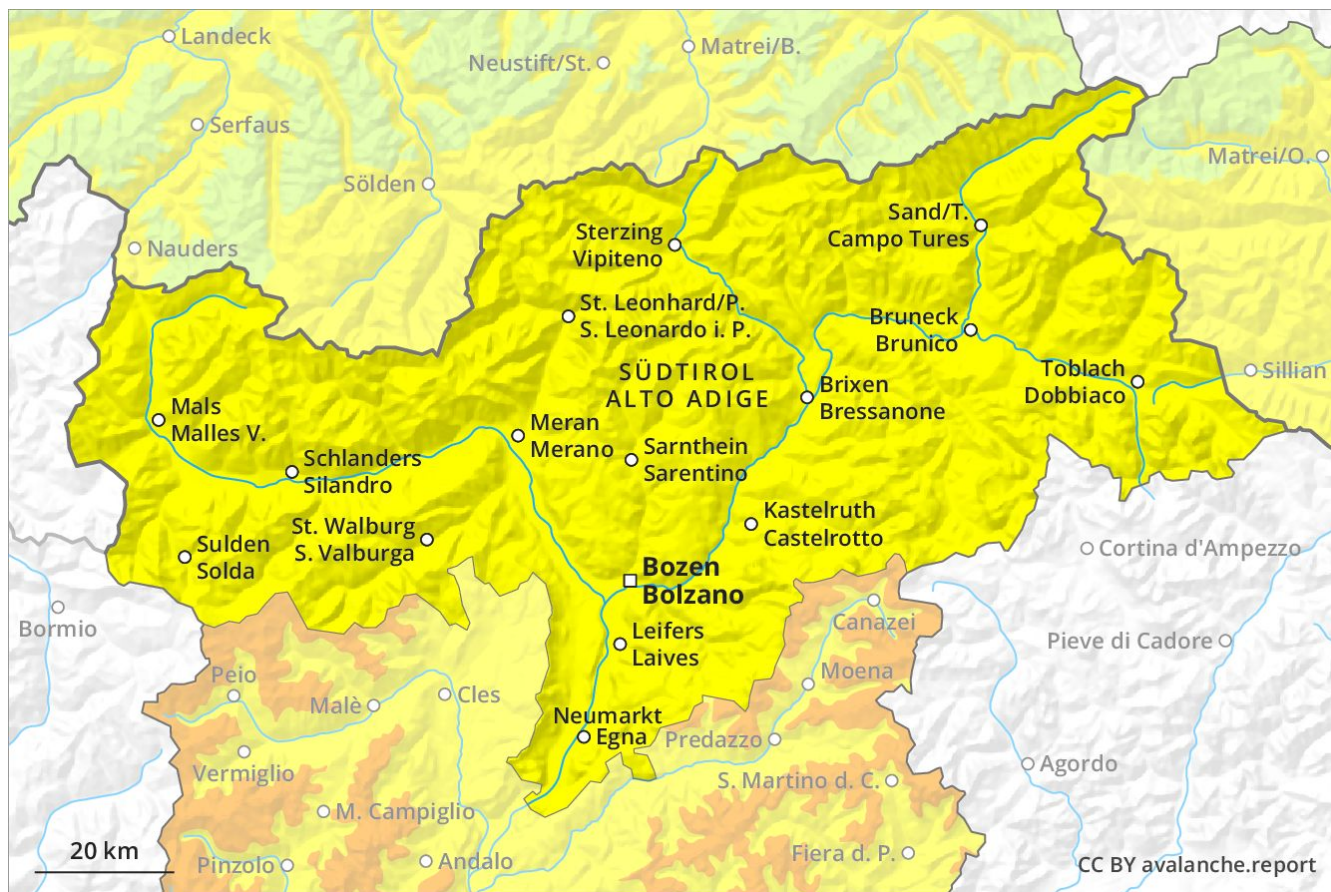
Avalanche Forecast

Monday 08 04 2019

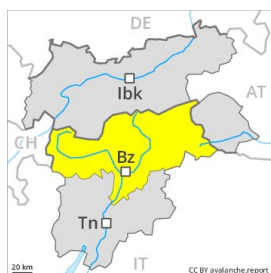
Published 07 04 2019, 17:00



Avalanche.report



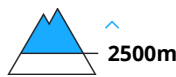
Danger Level 2 - Moderate



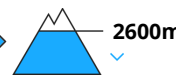
Tendency: Constant avalanche danger →
on Tuesday 09 04 2019



Wind-drifted
snow



Wet snow



Wind slabs require caution. This applies at high altitudes and in high Alpine regions. As a consequence of warming during the day, the likelihood of wet and gliding avalanches being released will increase.

Avalanches can be released, even by small loads in isolated cases and reach medium size. The avalanche prone locations for dry avalanches are to be found in particular on very steep shady slopes above approximately 2500 m. Caution is to be exercised in particular adjacent to ridgelines and in pass areas as well as in gullies and bowls. In regions with a lot of snow and in high Alpine regions avalanche prone locations are more widespread and the danger is slightly greater.

During the day:

As a consequence of warming during the day individual small to medium-sized wet loose snow avalanches are possible, especially on extremely steep east, south and west facing slopes. In some localities increase in avalanche danger as a consequence of the rain.

Snowpack

Danger patterns

dp 6: cold, loose snow and wind

dp 2: gliding snow

Outgoing longwave radiation during the night will be reduced. The wind has transported some snow. The extensive wind slabs are lying on soft layers in particular on steep shady slopes. The old snowpack will be stable over a wide area. The old snowpack will be wet all the way through at intermediate altitudes. At low altitude hardly any snow is lying.

Tendency

Moderate, level 2.