

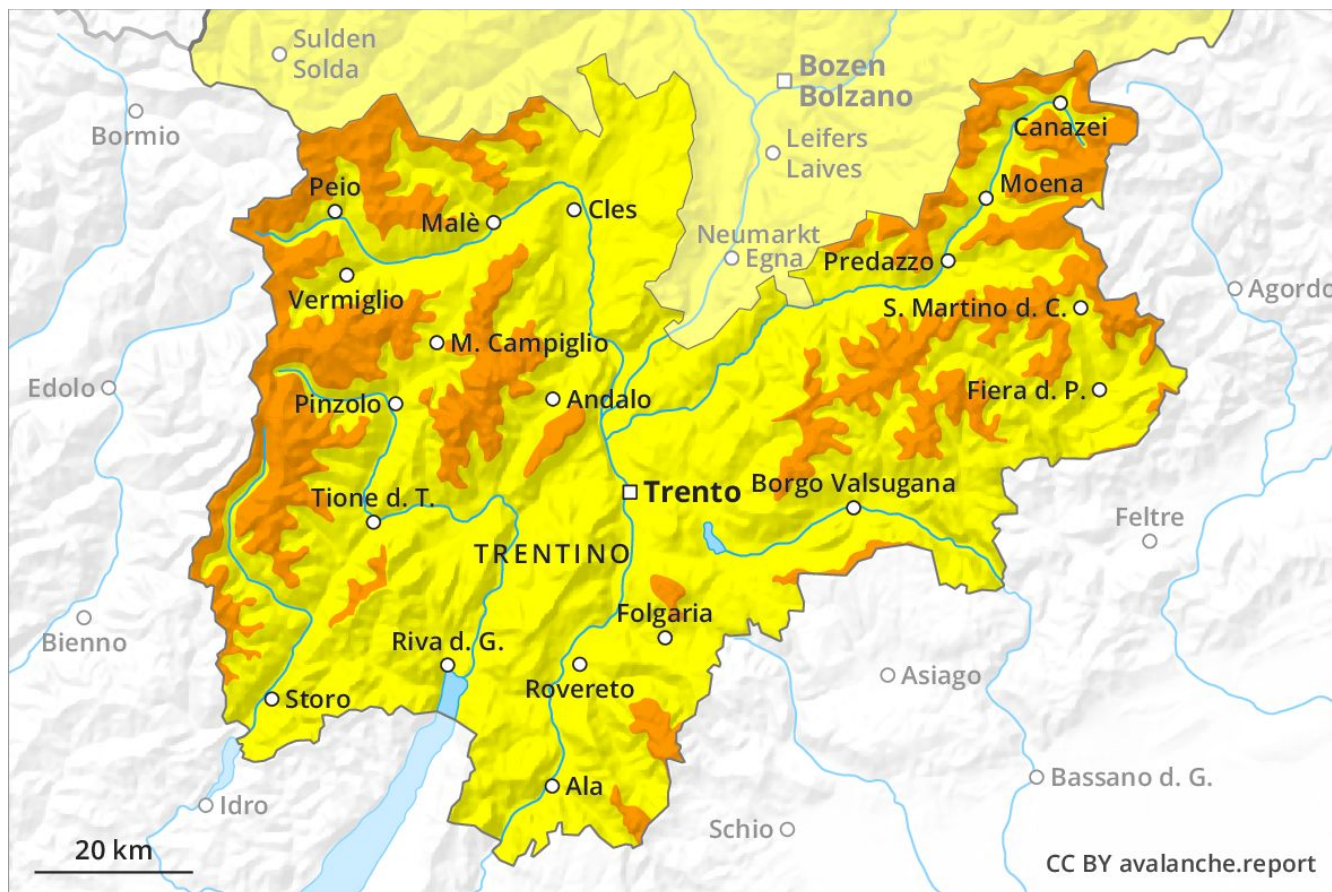
# Avalanche Forecast

## Monday 08 04 2019

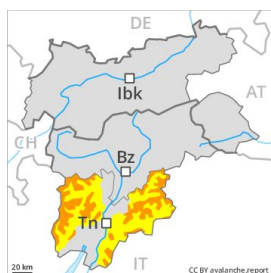
Published 07 04 2019, 17:00



Avalanche.report



## Danger Level 3 - Considerable



**Tendency: Decreasing avalanche danger**  
on Tuesday 09 04 2019



Wind-drifted  
snow



Treeline



Wet snow



2200m  
1600m

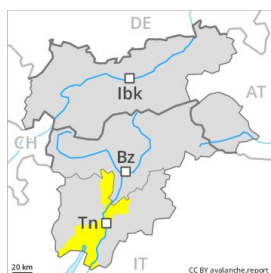
The fresh snow and wind slabs must be evaluated with care and prudence in all aspects above approximately 1800 m. On steep grassy slopes and at the base of rock walls individual moist loose snow avalanches are possible, in particular medium-sized ones.

As a consequence of warming during the day and solar radiation more natural avalanches are possible, in particular medium-sized ones. These can in isolated cases penetrate down to the ground and reach quite a large size. In particular, however, the deep wind slabs must be taken into account. These can be released by small loads and reach large size in isolated cases. Above the tree line the likelihood of avalanches being released is greater. The avalanche prone locations are to be found on steep slopes of all aspects and adjacent to ridgelines and in gullies and bowls. Off-piste activities call for experience in the assessment of avalanche danger and careful route selection.

### Snowpack

The southerly wind has transported the fresh snow significantly. It is lying on top of a quite favourable old snowpack in particular on sunny slopes. The fresh wind slabs are lying on soft layers in particular on northwest to north to northeast facing aspects. Faceted weak layers exist deep in the snowpack on wind-protected shady slopes.

## Danger Level 2 - Moderate



**Tendency: Decreasing avalanche danger**  
on Tuesday 09 04 2019



Wind-drifted  
snow



Treeline



Wet snow



1800m

The fresh snow represents the main danger. Natural avalanches and loose snow slides are possible in isolated cases as before.

As a consequence of warming during the day more natural avalanches are possible, but they will be mostly small. Above approximately 1800 m the avalanche prone locations are more prevalent. In addition the sometimes deep wind slabs must be taken into account. These can in very isolated cases be released by small loads, but they will be small in most cases. The avalanche prone locations are to be found in particular in gullies and bowls in all aspects and adjacent to ridgelines in all altitude zones.

### Snowpack

The fresh snow and wind slabs remain in some cases prone to triggering in all aspects above approximately 1800 m. The sometimes deep wind slabs of the last two days are lying on soft layers in particular on northwest to north to northeast facing aspects. Below approximately 1500 m only a little snow is lying.