

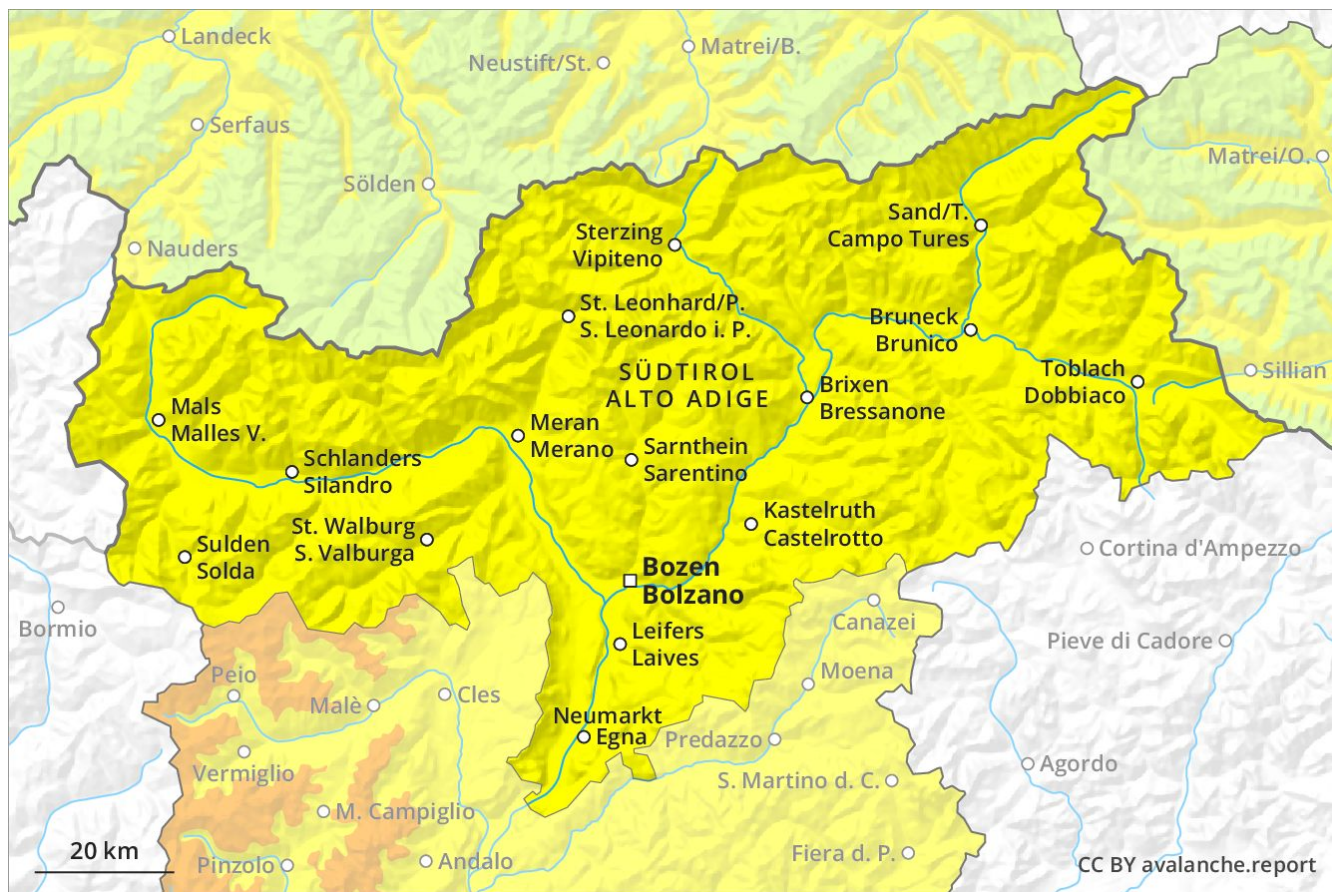
Avalanche Forecast

Wednesday 10 04 2019

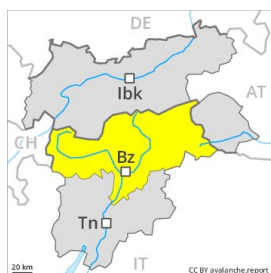
Published 09 04 2019, 17:00



Avalanche.report



Danger Level 2 - Moderate



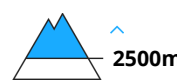
Tendency: Constant avalanche danger →
on Thursday 11 04 2019



Wet snow



Wind-drifted
snow



Natural wet avalanches are possible already in the late morning. Wind slabs in high Alpine regions.

In all regions and below approximately 2500 m small and medium-sized moist and wet avalanches are possible. As a consequence of the rain, the likelihood of moist and wet avalanches being released will increase. The mostly small wind slabs of the last few days must be evaluated with care and prudence in particular on west to north to northeast facing aspects above approximately 2500 m. Single backcountry tourers can release avalanches in some places, with a large load in most cases.

Snowpack

Outgoing longwave radiation during the night will be severely restricted. The surface of the snowpack will freeze very little and will already be soft in the early morning. Up to 1800 m rain will fall in some localities. As the day progresses as the penetration by moisture increases there will be an increase in the danger of moist and wet snow slides within the current danger level. This applies in all aspects below approximately 2500 m. Isolated avalanche prone weak layers exist in the bottom section of the old snowpack on shady slopes. The mostly small wind slabs of the last few days are barely recognisable because of the poor visibility.

Tendency

Wet snow slides and avalanches are still possible.