

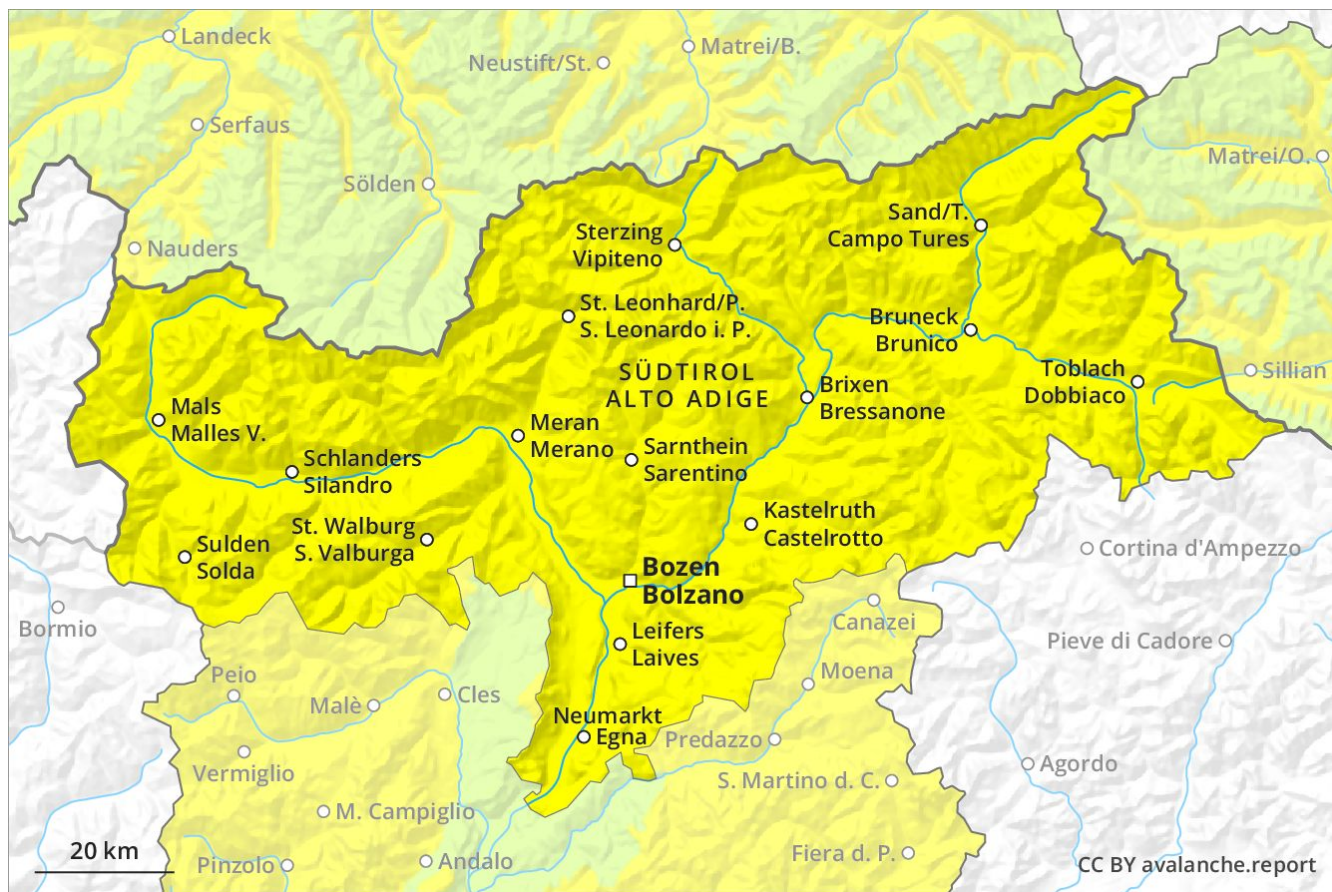
# Avalanche Forecast

## Friday 12 04 2019

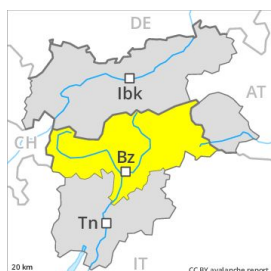
Published 11 04 2019, 17:00



Avalanche.report



## Danger Level 2 - Moderate



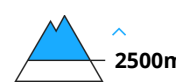
**Tendency: Constant avalanche danger** →  
on Saturday 13 04 2019



Wet snow



Wind-drifted  
snow



### Moist and wet avalanches are the main danger.

In all regions and below approximately 2500 m small and medium-sized moist and wet avalanches are possible. As a consequence of the rain, the likelihood of moist and wet avalanches being released will increase. Apart from the danger of being buried, restraint should be exercised as well in view of the danger of avalanches sweeping people along and giving rise to falls. Medium-sized and, in isolated cases, large natural avalanches are possible in particular at the base of rock walls and behind abrupt changes in the terrain. The mostly small wind slabs of the last few days must be evaluated with care and prudence in particular on southwest to north to northeast facing aspects above approximately 2500 m. Single backcountry tourers can release avalanches in some places, with a large load in most cases.

### Snowpack

Up to 2000 m rain has fallen over a wide area. The surface of the snowpack cooled hardly at all during the overcast night and will already be soft in the early morning. The snowpack will be wet all the way through below approximately 2500 m. As the day progresses as the penetration by moisture increases there will be an increase in the danger of moist and wet avalanches within the current danger level. This applies in all aspects in particular below approximately 2500 m. The mostly small wind slabs of the last few days are barely recognisable because of the poor visibility. They can be released by a single winter sport participant in isolated cases and generally in high Alpine regions.

### Tendency

Moderate, level 2. The conditions are sometimes unfavourable for backcountry touring and other off-piste activities.