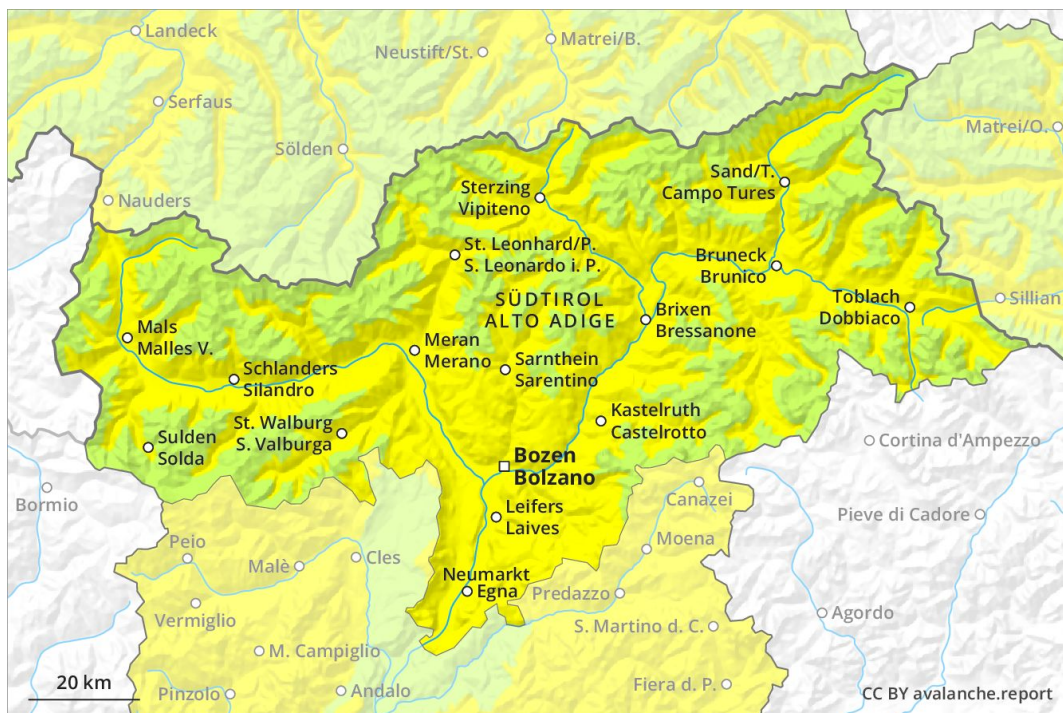
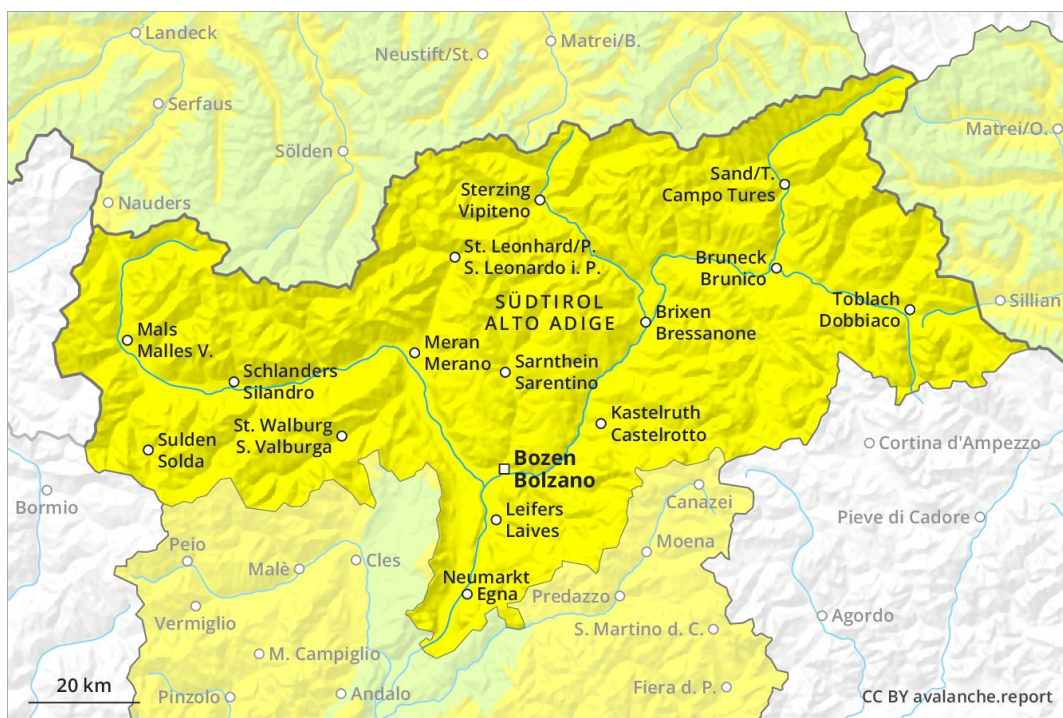




AM

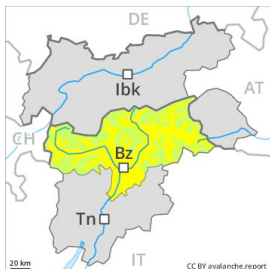


PM



Danger Level 2 - Moderate

AM:



Tendency: Increasing avalanche danger
 on Sunday 14 04 2019



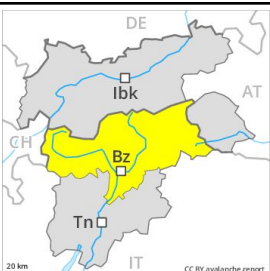
Wet snow



Wind-drifted snow



PM:



Tendency: Increasing avalanche danger
 on Sunday 14 04 2019



In the event of an overcast night caution is to be exercised below approximately 2500 m, in particular.

In all regions and below approximately 2500 m moist and wet avalanches are possible. Apart from the danger of being buried, restraint should be exercised as well in view of the danger of avalanches sweeping people along and giving rise to falls. Medium-sized and, in isolated cases, large natural avalanches are possible in particular at the base of rock walls and behind abrupt changes in the terrain. Backcountry tours and ascents to alpine cabins should be started very early and concluded timely. The wind slabs are to be evaluated with care and prudence in particular in extremely steep terrain. This applies in particular above approximately 2500 m adjacent to ridgelines. Exposed parts of transportation routes can be endangered very occasionally in the regions with a lot of snow.

Snowpack

The surface of the snowpack has frozen to form a strong crust only at high altitudes and will soften during the day. The snowpack will be wet all the way through below approximately 2500 m. As the day progresses as the penetration by moisture increases there will be an increase in the danger of moist and wet avalanches. This applies in all aspects. The mostly small wind slabs of the last few days are to be bypassed in particular in very steep terrain. They can be released by a single winter sport participant in isolated cases and generally in high Alpine regions.

Tendency

Moderate, level 2. The conditions are sometimes unfavourable for backcountry touring and other off-piste activities.