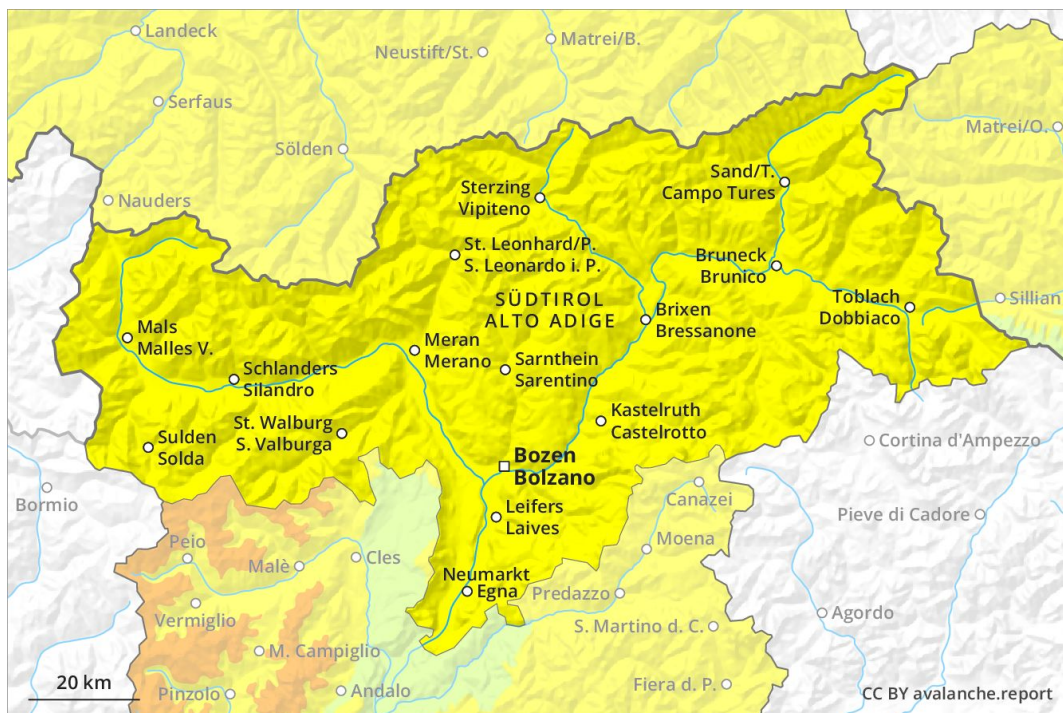
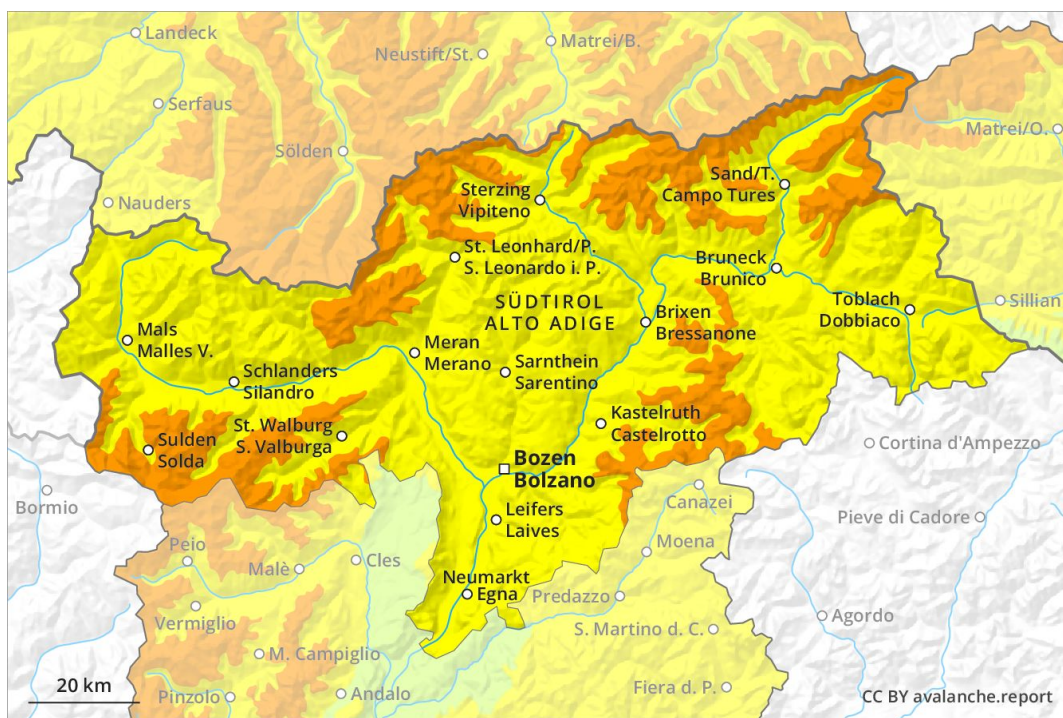


AM

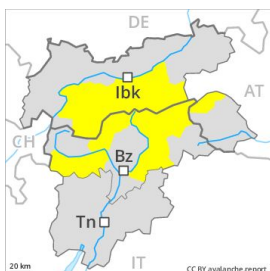


PM



Danger Level 3 - Considerable

AM:



Tendency: Decreasing avalanche danger
 on Tuesday 16 04 2019



Wet snow



Treeline

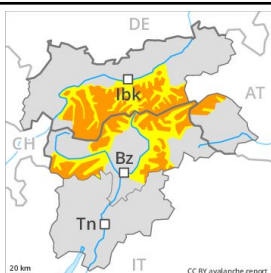


New snow



Treeline

PM:



Treeline

Tendency: Decreasing avalanche danger
 on Tuesday 16 04 2019



Wet snow



2500m



New snow



Treeline

The fresh snow of Sunday must be evaluated with care and prudence. Gliding avalanches are also to be expected.

As a consequence of warming during the day and the solar radiation, the likelihood of moist and wet avalanches being released will increase quickly in particular on steep sunny slopes. Medium-sized and, in isolated cases, large natural avalanches are possible in particular at the base of rock walls and behind abrupt changes in the terrain. In addition still more very occasional small and, in isolated cases, medium-sized dry avalanches are possible. This applies in particular on very steep slopes above approximately 2200 m. Gliding avalanches can also be released in the morning.

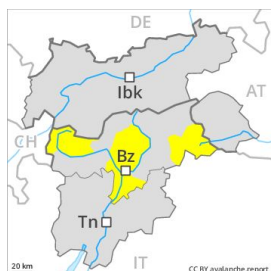
Snowpack

More snow than expected has fallen in some localities. The old snowpack will be wet all the way through below approximately 2500 m. As the day progresses as a consequence of warming during the day and solar radiation there will be a rapid increase in the danger of moist and wet avalanches to level 3 (considerable). This applies in all aspects in particular below approximately 2500 m.

Tendency

Moderate, level 2. The conditions are sometimes unfavourable for backcountry touring and other off-piste activities.

Danger Level 2 - Moderate



Tendency: Constant avalanche danger →
on Tuesday 16 04 2019



Wet snow



2500m



New snow



2200m

Natural wet avalanches are the main danger. The fresh snow of Sunday must be evaluated with care and prudence.

In all regions and below approximately 2500 m moist and wet avalanches are possible. As a consequence of warming during the day, the likelihood of wet avalanches during the day being released will increase gradually. Apart from the danger of being buried, restraint should be exercised as well in view of the danger of avalanches sweeping people along and giving rise to falls. Medium-sized and, in isolated cases, large natural avalanches are possible in particular at the base of rock walls and behind abrupt changes in the terrain. In addition still more very occasional small and, in isolated cases, medium-sized dry avalanches are possible. This applies in particular on very steep slopes above approximately 2200 m.

Snowpack

The surface of the snowpack will only just freeze and will soften quickly. The snowpack will be wet all the way through below approximately 2500 m. As the day progresses as a consequence of warming during the day and solar radiation there will be an increase in the danger of moist and wet avalanches within the current danger level. This applies in all aspects in particular below approximately 2500 m.

Tendency

Moderate, level 2. The conditions are sometimes unfavourable for backcountry touring and other off-piste activities.