

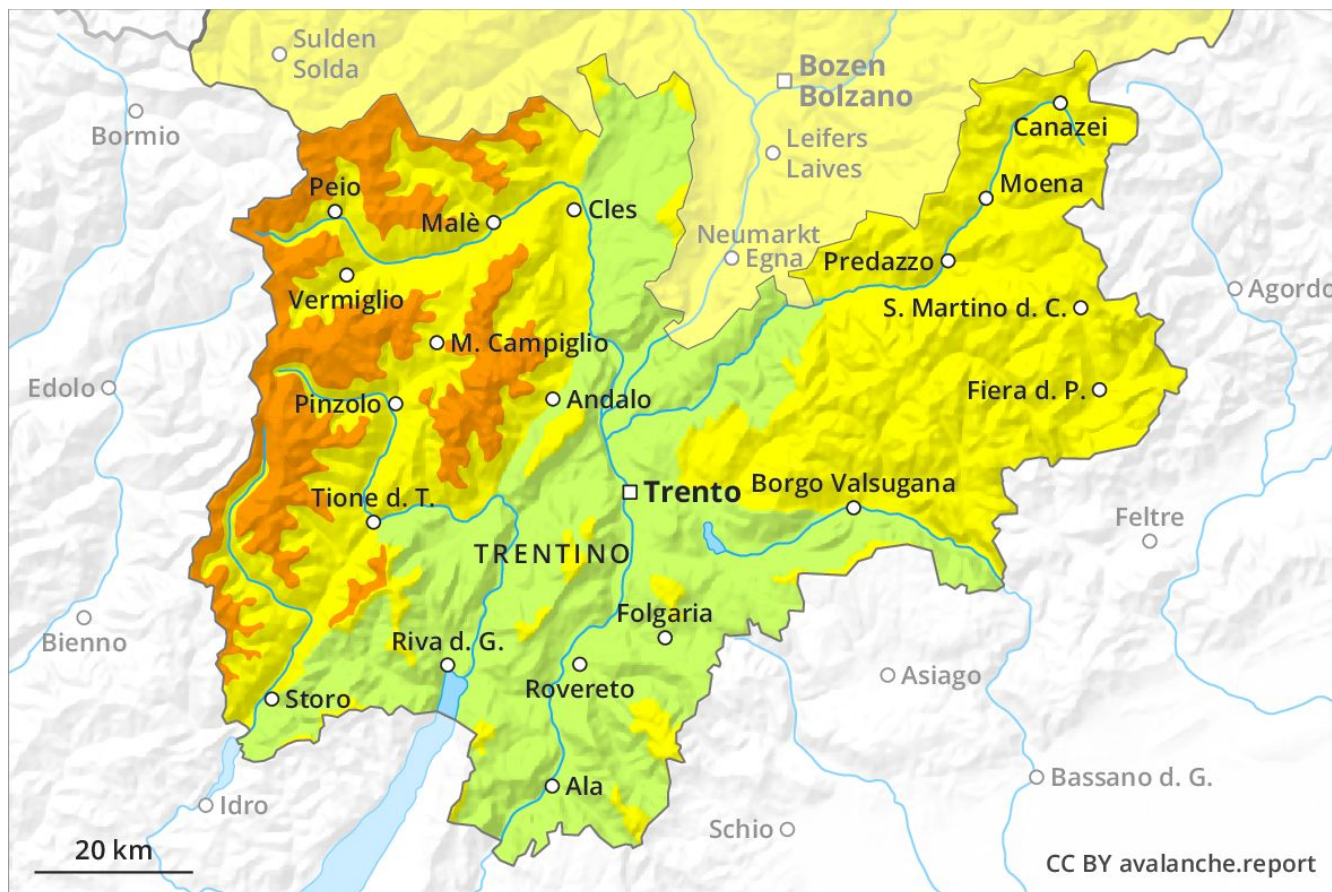
Avalanche Forecast

Monday 15 04 2019

Published 15 04 2019, 07:53



Avalanche.report



Danger Level 3 - Considerable



Tendency: Constant avalanche danger →
on Tuesday 16 04 2019



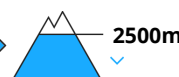
New snow



2500m



Wet snow



2500m

In all aspects and on very steep slopes moist snow slides and avalanches are possible, even medium-sized ones. The fresh snow can be released easily, even by a single winter sport participant in all aspects above approximately 2000 m.

Above the tree line the likelihood of avalanches being released is greater. As a consequence of warming during the day individual natural avalanches are possible, even medium-sized ones. In addition the older wind slabs must be taken into account. They can be released, mostly by large loads in isolated cases and reach medium size. The avalanche prone locations are to be found on steep slopes of all aspects and adjacent to ridgelines and in gullies and bowls above approximately 2500 m.

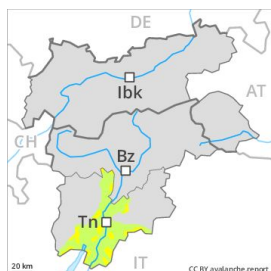
Snowpack

The snowpack will be generally moist. As the day progresses in particular below approximately 2500 m there will be an increase in the danger of wet snow slides within the current danger level. The fresh snow and wind slabs remain in some cases prone to triggering above approximately 2500 m. The fresh and older wind slabs represent the main danger. They are to be evaluated with care and prudence in all aspects above approximately 2500 m. Below approximately 1500 m hardly any snow is lying.

Tendency

The avalanche danger will persist.

Danger Level 2 - Moderate



Tendency: Constant avalanche danger →
on Tuesday 16 04 2019



Wet snow



Treeline



Gliding snow



Treeline

Small avalanches and moist snow slides are possible in isolated cases as before.

Above approximately 1800 m individual natural avalanches are possible, but they will be mostly small. In addition the wind slabs must be taken into account. These can in very isolated cases be released, in particular by large loads, but they will be small in most cases. The avalanche prone locations are to be found in particular in gullies and bowls in all aspects and adjacent to ridgelines above approximately 1800 m.

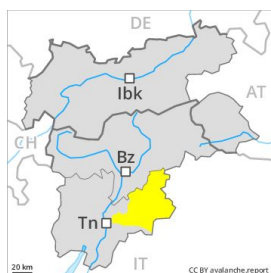
Snowpack

The snowpack will be generally moist. The fresh snow and wind slabs remain in some cases prone to triggering above approximately 1800 m. The fresh and older wind slabs must be evaluated with care and prudence in particular on very steep shady slopes. Below approximately 1800 m from a snow sport perspective, in most cases insufficient snow is lying.

Tendency

The avalanche danger will persist.

Danger Level 2 - Moderate



Tendency: Constant avalanche danger →
on Tuesday 16 04 2019



Wind-drifted
snow



Wet snow



In all aspects and on very steep slopes moist snow slides and avalanches are possible, even medium-sized ones. The fresh snow can be released, especially by large additional loads in all aspects above approximately 2500 m.

Above the tree line the likelihood of avalanches being released is greater. As a consequence of warming during the day individual natural avalanches are possible, even medium-sized ones. In addition the older wind slabs must be taken into account. They can be released, mostly by large loads in isolated cases and reach medium size. The avalanche prone locations are to be found on steep slopes of all aspects and adjacent to ridgelines and in gullies and bowls above approximately 2500 m.

Snowpack

The snowpack will be generally moist. As the day progresses in particular below approximately 2500 m there will be an increase in the danger of wet snow slides within the current danger level. The fresh snow and wind slabs remain in some cases prone to triggering above approximately 2500 m. The fresh and older wind slabs represent the main danger. They are to be evaluated with care and prudence in all aspects above approximately 2500 m. Below approximately 1500 m hardly any snow is lying.

Tendency

The avalanche danger will persist.