

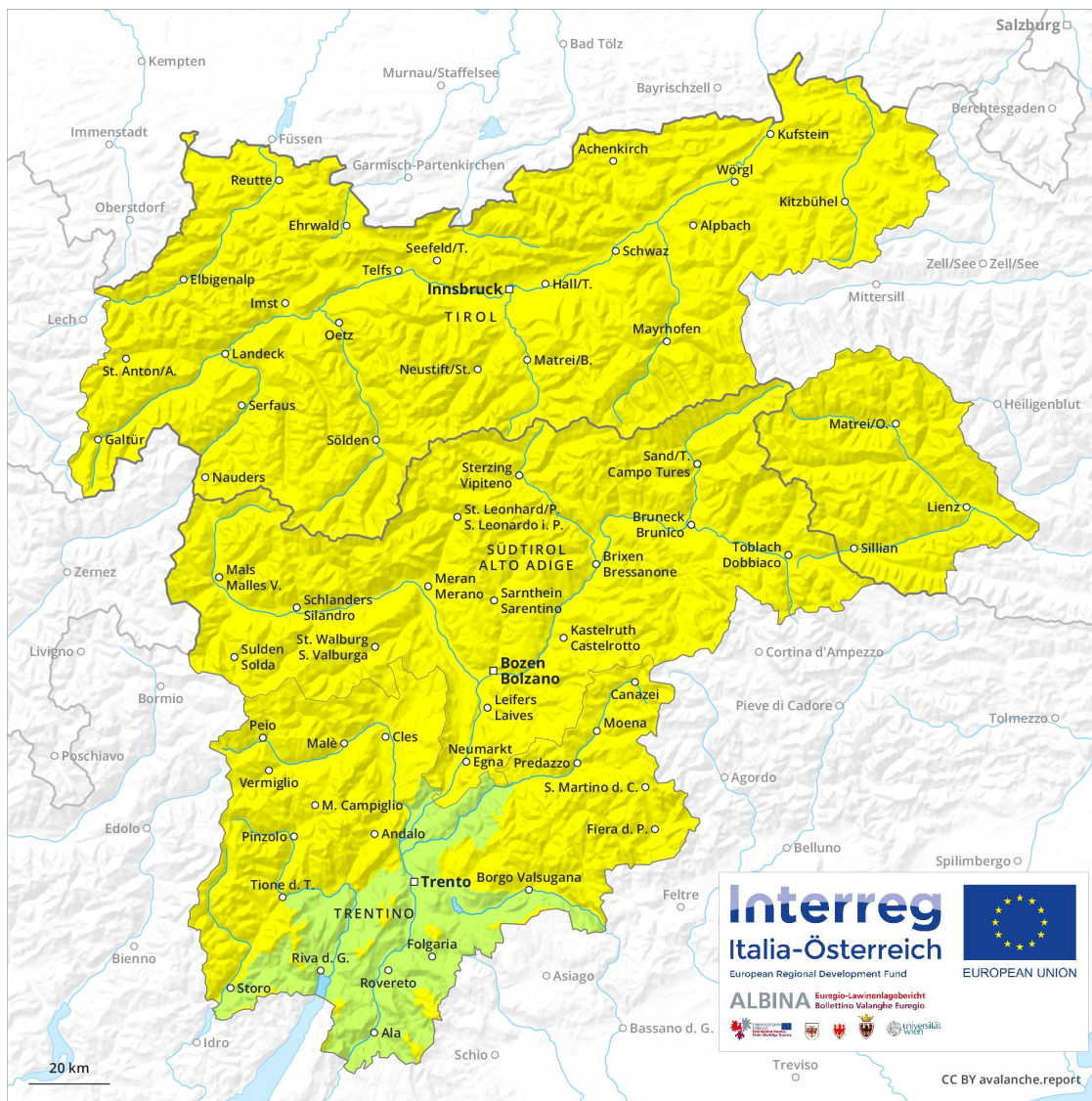
# Avalanche Forecast

## Tuesday 23 04 2019

Published 22 04 2019, 17:00



Avalanche.report



## Danger Level 2 - Moderate



**Tendency: Constant avalanche danger** →  
on Wednesday 24 04 2019



Wet snow



2400m

### Increase in danger of wet avalanches.

Moderate danger of wet avalanches will be encountered over a wide area. This applies below approximately 2400 m.

Currently there are quite favourable avalanche conditions at elevated altitudes. This applies in particular above approximately 2400 m.

The danger of wet avalanches will increase. The avalanches can release the moist old snow as well and reach large size in some cases. Below approximately 2400 m possibly danger level 3 (considerable) will be reached.

### Snowpack

#### Danger patterns

dp 10: springtime scenario

dp 1: deep persistent weak layer

Outgoing longwave radiation during the night was reduced. Isolated avalanche prone weak layers exist in the bottom section of the old snowpack on shady slopes. The old snowpack will be wet all the way through at intermediate and high altitudes. At low altitude hardly any snow is lying.

### Tendency

Wet avalanches as the day progresses.

## Danger Level 2 - Moderate



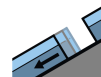
**Tendency: Constant avalanche danger** →  
on Wednesday 24 04 2019



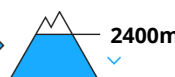
Wet snow



2400m



Gliding snow



2400m

### Increase in danger of wet avalanches.

Moderate danger of wet avalanches will be encountered over a wide area. This applies below approximately 2400 m. Currently there are quite favourable avalanche conditions at elevated altitudes. This applies in particular above approximately 2400 m.

The danger of wet avalanches will increase. The avalanches can release the moist old snow as well and reach large size in some cases. Below approximately 2400 m possibly danger level 3 (considerable) will be reached.

### Snowpack

#### Danger patterns

dp 10: springtime scenario

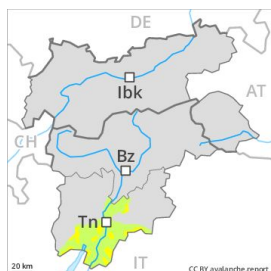
dp 2: gliding snow

Outgoing longwave radiation during the night was barely evident. The surface of the snowpack has frozen to form a strong crust only at high altitudes and will soften earlier than the day before. The old snowpack will be wet all the way through at intermediate and high altitudes. At low altitude hardly any snow is lying.

### Tendency

Wet avalanches as the day progresses.

## Danger Level 2 - Moderate



**Tendency: Constant avalanche danger** →  
on Wednesday 24 04 2019



Wet snow



Treeline

As a consequence of the rain, the likelihood of wet loose snow avalanches being released will increase.

As a consequence of the rain, the likelihood of wet small and medium sized avalanches being released will increase in particular on north and northwest facing slopes at elevated altitudes.

### Snowpack

The old snowpack will be wet all the way through at intermediate and high altitudes. In the Etschtal no snow is lying on south facing slopes.

### Tendency

The backcountry touring conditions remain spring-like.

## Danger Level 2 - Moderate



**Tendency: Increasing avalanche danger**  
on Wednesday 24 04 2019



Wet snow



2400m



New snow



2400m

### Fresh snow at high altitude.

As a consequence of the rain there will be a gradual increase in the danger of moist and wet avalanches. Below approximately 2400 m wet avalanches are possible as the day progresses. On Tuesday as a consequence of fresh snow and wind there will be an increase in the danger of dry avalanches. The fresh snow can be released by a single winter sport participant especially on west to north to east facing aspects at high altitudes and in high Alpine regions. In particular in the regions exposed to heavier precipitation the prevalence and size of the avalanche prone locations will increase as the day progresses. They are barely recognisable because of the poor visibility.

### Snowpack

The surface of the snowpack cooled hardly at all during the overcast night and will already be soft in the early morning. Over a wide area 20 cm of snow, and even more in some localities, will fall above approximately 2000 m. As a consequence of fresh snow and a sometimes strong southerly wind, wind slabs will form in particular adjacent to ridgelines as well as at high altitudes and in high Alpine regions.

### Tendency

In some regions light precipitation.

## Danger Level 2 - Moderate



**Tendency: Increasing avalanche danger**  
on Wednesday 24 04 2019



Wet snow



2400m



New snow



2400m

The number and size of avalanche prone locations will increase as the day progresses.

The fresh snow must be evaluated with care and prudence in particular on northeast to north to northwest facing aspects above approximately 2400 m. Dry avalanches can in very isolated cases be released by large loads and reach medium size. As the day progresses the likelihood of moist and wet avalanches being released will increase in particular below approximately 2200 m. The avalanches can release the moist old snow as well and reach large size in some cases. Apart from the danger of being buried, restraint should be exercised as well in view of the danger of avalanches sweeping people along and giving rise to falls.

### Snowpack

Fresh snow to above 2000 m. The old snowpack remains moist below approximately 2400 m. At low altitude hardly any snow is lying. Isolated avalanche prone weak layers exist in the bottom section of the old snowpack on shady slopes, especially between approximately 1900 and 2400 m.