

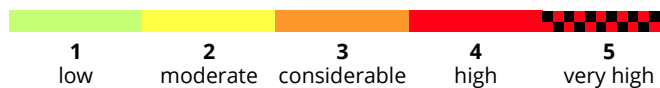
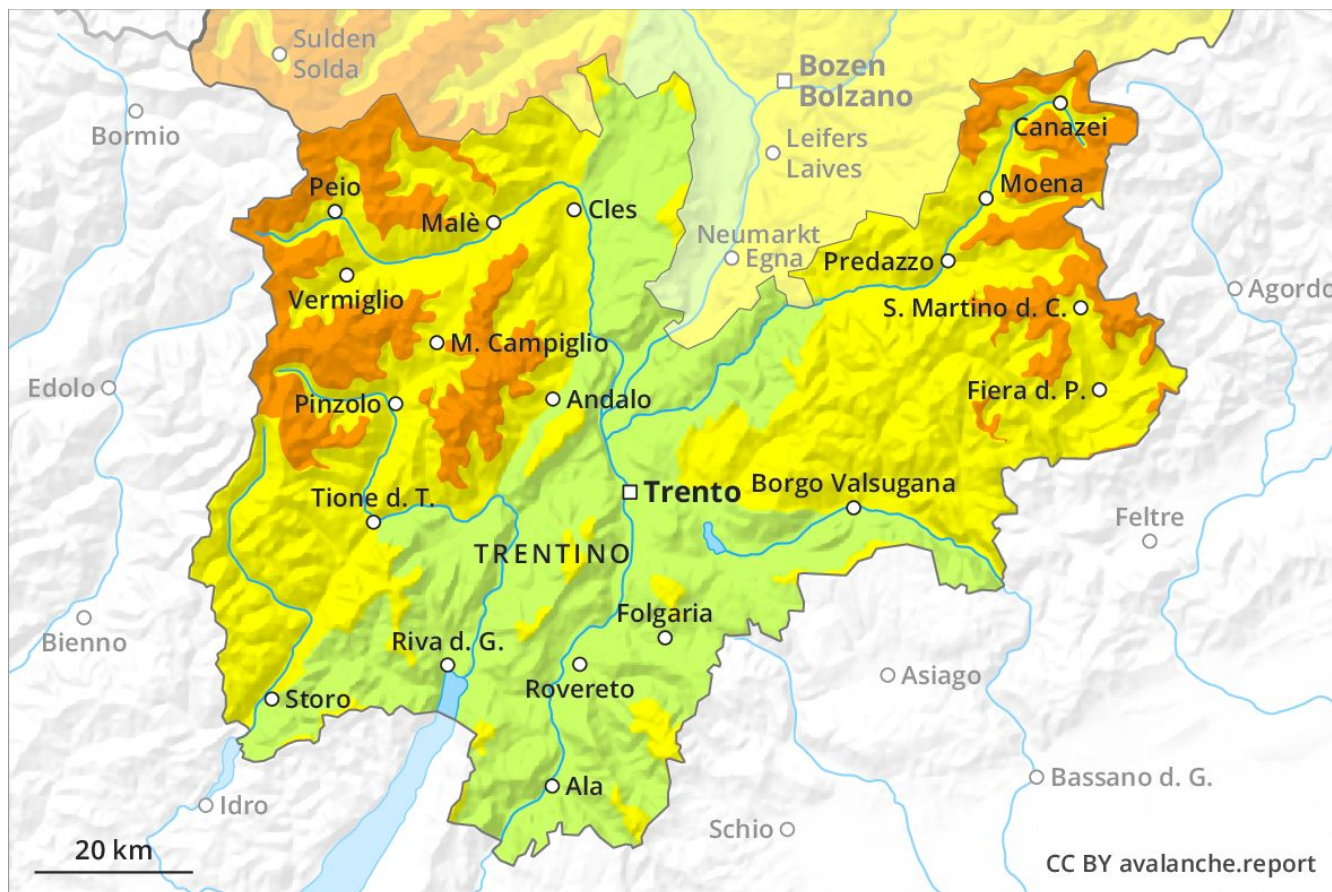
Avalanche Forecast

Friday 26 04 2019

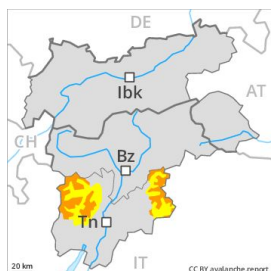
Published 25 04 2019, 17:00



Avalanche.report



Danger Level 3 - Considerable



Tendency: Increasing avalanche danger
on Saturday 27 04 2019



Wet snow



New snow



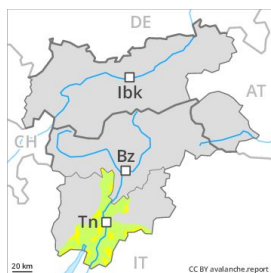
In the regions where more snow falls the avalanche danger is greater.

The fresh snow must be evaluated with care and prudence above approximately 2400 m. Dry avalanches can be released, even by small loads in isolated cases and reach medium size. In some places they can release the moist old snow as well and reach large size in some cases. As a consequence of warming during the day, the likelihood of moist and wet avalanches being released will increase in particular below approximately 2400 m. Apart from the danger of being buried, restraint should be exercised as well in view of the danger of avalanches sweeping people along and giving rise to falls.

Snowpack

Fresh snow to above 2300 m. The old snowpack remains moist below approximately 2400 m. At low altitude no snow is lying. Isolated avalanche prone weak layers exist in the bottom section of the old snowpack on shady slopes, especially between approximately 1900 and 2400 m.

Danger Level 2 - Moderate



Tendency: Constant avalanche danger →
on Saturday 27 04 2019



Wet snow



Treeline

As a consequence of the rain, the likelihood of wet loose snow avalanches being released will increase.

As a consequence of the rain, the likelihood of wet small and medium sized avalanches being released will increase in particular on north and northwest facing slopes at elevated altitudes.

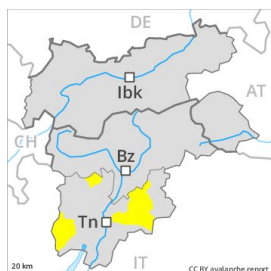
Snowpack

The old snowpack will be wet all the way through at intermediate and high altitudes. In the Etschtal no snow is lying on south facing slopes.

Tendency

The backcountry touring conditions remain spring-like.

Danger Level 2 - Moderate



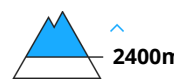
Tendency: Increasing avalanche danger
on Saturday 27 04 2019



Wet snow



New snow



Moist and wet avalanches are still possible.

The fresh snow must be evaluated with care and prudence in particular on northeast to north to northwest facing aspects above approximately 2400 m. Dry avalanches can in isolated cases be released, in particular by large loads and reach medium size. In some places they can release the moist old snow as well and reach large size in some cases. As a consequence of warming, the likelihood of moist and wet avalanches being released will increase in particular below approximately 2400 m. Apart from the danger of being buried, restraint should be exercised as well in view of the danger of avalanches sweeping people along and giving rise to falls. In particular in regions neighbouring those that are subject to danger level 3 (considerable) avalanche prone locations are more prevalent and the danger is greater.

Snowpack

Fresh snow to above 2300 m. The old snowpack remains moist below approximately 2400 m. At low altitude no snow is lying. Isolated avalanche prone weak layers exist in the bottom section of the old snowpack on shady slopes, especially between approximately 1900 and 2400 m.