

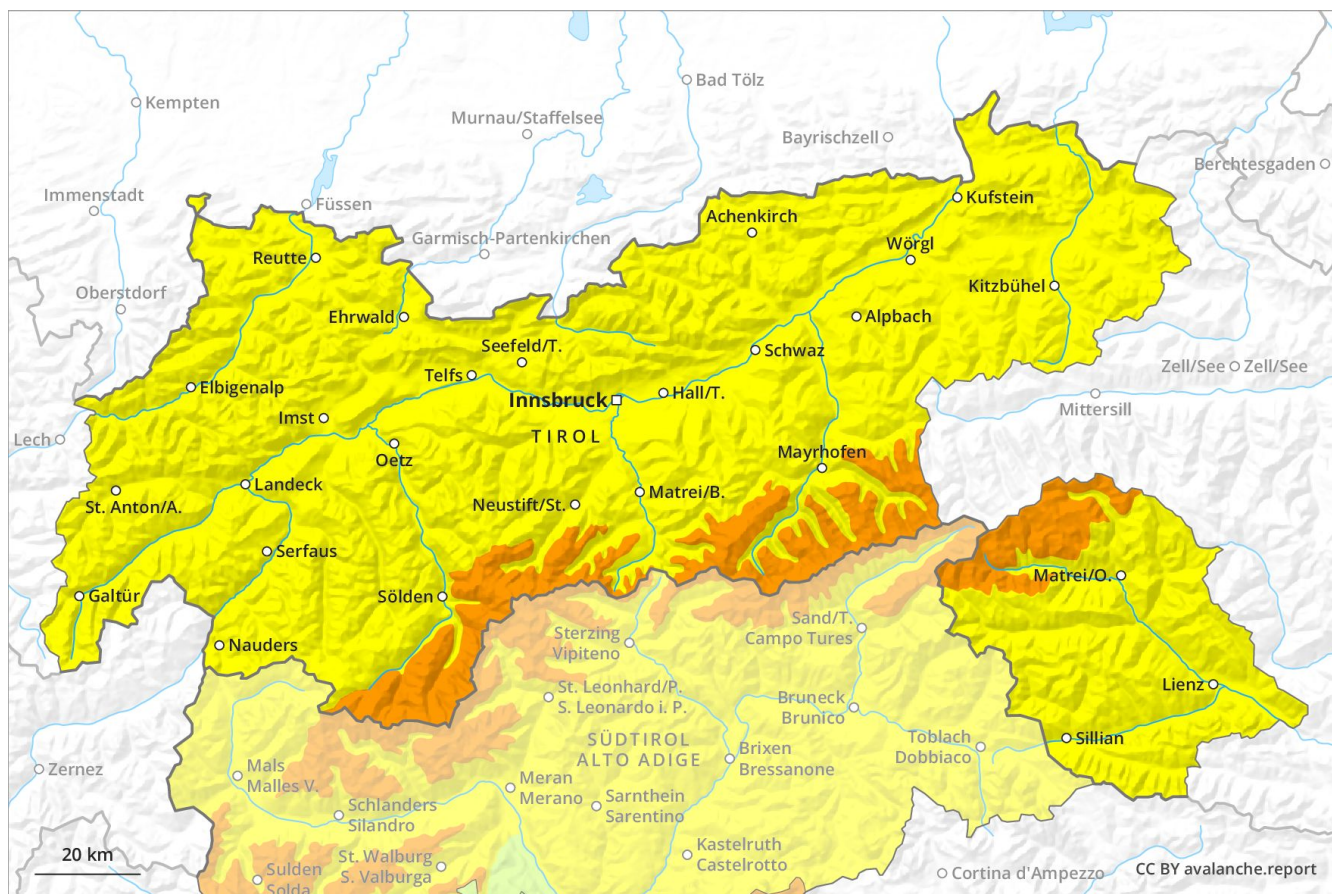
Avalanche Forecast

Saturday 27 04 2019

Published 26 04 2019, 17:00



Avalanche.report



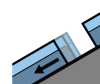
Danger Level 3 - Considerable



Tendency: Constant avalanche danger →
 on Sunday 28 04 2019



Wind-drifted
 snow



Gliding snow



Fresh wind slabs at elevated altitudes. Loose snow avalanches as the day progresses.

As a consequence of fresh snow and wind, extensive wind slabs formed especially in the regions exposed to heavier precipitation. They are prone to triggering in particular on northwest to north to east facing aspects above approximately 2600 m. The avalanche prone locations are to be found in particular in gullies and bowls, and behind abrupt changes in the terrain. These places are sometimes covered with fresh snow and are difficult to recognise. The prevalence of avalanche prone locations and likelihood of triggering will increase with altitude.

As a consequence of warming during the day and solar radiation more frequent small and medium-sized loose snow avalanches are to be expected. This applies on extremely steep slopes in all aspects. In addition a latent danger of gliding avalanches exists, especially on steep grassy slopes below approximately 2600 m.

Snowpack

Danger patterns

dp 6: cold, loose snow and wind

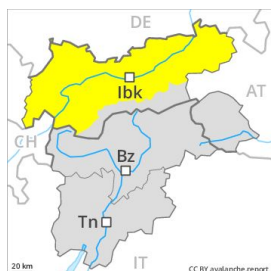
dp 2: gliding snow

In particular on the Timmelsjoch and in neighbouring regions 30 to 40 cm of snow, and even more in some localities, fell. Over a wide area 20 to 30 cm of snow. will fall until the early morning above approximately 2000 m. The wind will be moderate. Fresh wind slabs are lying on soft layers especially on steep shady slopes above approximately 2600 m. The old snowpack will be wet all the way through at intermediate and high altitudes. At low altitude hardly any snow is lying.

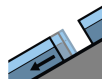
Tendency

Fresh wind slabs in the high Alpine regions. Loose snow avalanches as the day progresses.

Danger Level 2 - Moderate



Tendency: Constant avalanche danger →
on Sunday 28 04 2019



Gliding snow



2600m

Gliding avalanches are possible in isolated cases as before. Loose snow avalanches as the day progresses.

As a consequence of warming during the day and solar radiation more frequent small and, in isolated cases, medium-sized loose snow avalanches are to be expected. This applies on extremely steep slopes in all aspects, in the regions exposed to heavier precipitation in particular.

In addition a latent danger of gliding avalanches exists, especially on steep grassy slopes below approximately 2600 m.

At elevated altitudes small wind slabs formed. They are in isolated cases prone to triggering on very steep shady slopes above approximately 2600 m. The prevalence of avalanche prone locations and likelihood of triggering will increase with altitude.

Snowpack

Danger patterns

dp 2: gliding snow

dp 10: springtime scenario

Over a wide area 10 to 15 cm of snow, and up to 20 cm in some localities, will fall until the early morning above approximately 2000 m. The old snowpack will be wet all the way through at intermediate and high altitudes. At low altitude hardly any snow is lying.

Tendency

Fresh wind slabs in the high Alpine regions. Loose snow avalanches as the day progresses.

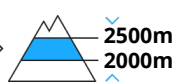
Danger Level 2 - Moderate



Tendency: Constant avalanche danger →
 on Sunday 28 04 2019



Persistent weak layer



2500m
2000m



Wind-drifted snow



2600m

Isolated avalanche prone weak layers exist deep in the old snowpack. Loose snow avalanches as the day progresses. Fresh wind slabs in the high Alpine regions.

As a consequence of warming during the day and solar radiation more frequent small and, in isolated cases, medium-sized loose snow avalanches are to be expected. This applies on extremely steep slopes in all aspects, in the regions exposed to heavier precipitation in particular. On steep shady slopes wet avalanches can be triggered in deep layers of the snowpack and reach large size in isolated cases, especially between approximately 2000 and 2500 m in areas where the snow cover is rather shallow. Such avalanche prone locations are rare but are barely recognisable.

In addition mostly small wind slabs formed at elevated altitudes. They are in some cases prone to triggering on very steep shady slopes above approximately 2600 m. The prevalence of avalanche prone locations and likelihood of triggering will increase with altitude.

Snowpack

Danger patterns

dp 1: deep persistent weak layer

dp 6: cold, loose snow and wind

Over a wide area 10 to 15 cm of snow, and even more in some localities, will fall until the early morning above approximately 2000 m. In the south less snow will fall. The old snowpack will be wet all the way through at intermediate and high altitudes. Isolated avalanche prone weak layers exist in the old snowpack in particular on steep shady slopes. At low altitude hardly any snow is lying.

Tendency

Slight increase in danger of dry avalanches. Fresh wind slabs in the high Alpine regions. Loose snow avalanches as the day progresses.