

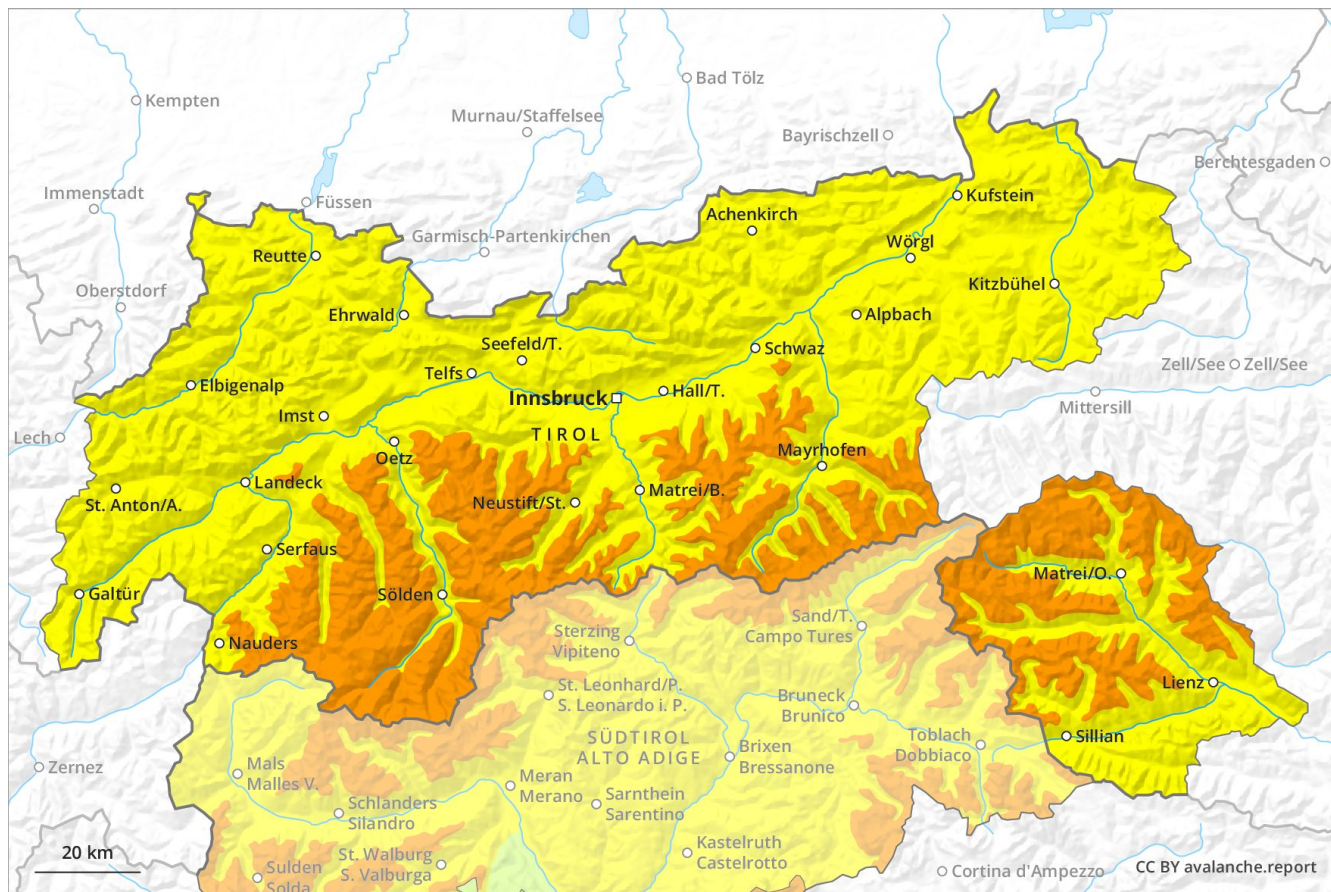
Avalanche Forecast

Sunday 28 04 2019

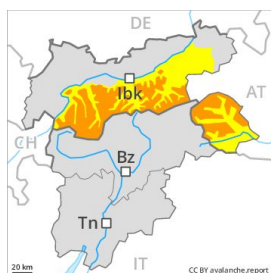
Published 27 04 2019, 17:00



Avalanche.report



Danger Level 3 - Considerable

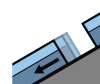


Tendency: Constant avalanche danger →

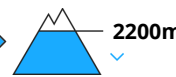
on Monday 29 04 2019



Wind-drifted
snow



Gliding snow



Fresh wind slabs at elevated altitudes. Moist and wet avalanches below approximately 2200 m.

As a consequence of fresh snow and wind, extensive wind slabs will form especially in the regions exposed to heavier precipitation. They are prone to triggering in particular on west to north to east facing aspects above approximately 2200 m. The avalanche prone locations are to be found in particular in gullies and bowls, and behind abrupt changes in the terrain. These places are sometimes covered with fresh snow and are difficult to recognise. The prevalence of avalanche prone locations and likelihood of triggering will increase with altitude.

As a consequence of the precipitation more frequent small to medium-sized moist and wet avalanches are to be expected below approximately 2200 m. This applies on steep slopes in all aspects. In addition a latent danger of gliding avalanches exists, especially on steep grassy slopes below approximately 2600 m.

Snowpack

Danger patterns

dp 6: cold, loose snow and wind

dp 2: gliding snow

Over a wide area 10 to 20 cm of snow, and even more in some localities, will fall above approximately 1600 m. The wind will be moderate to strong at times. Fresh wind slabs are lying on soft layers especially on steep shady slopes above approximately 2600 m. The old snowpack will be wet all the way through at intermediate and high altitudes. At low altitude hardly any snow is lying.

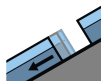
Tendency

Fresh wind slabs in the high Alpine regions. Dry and moist avalanches in all regions.

Danger Level 2 - Moderate



Tendency: Constant avalanche danger →
on Monday 29 04 2019



Gliding snow



2200m



Wet snow



2200m

Gliding avalanches are possible in isolated cases. Wet avalanches below approximately 2200 m.

As a consequence of the precipitation more frequent small to medium-sized dry and wet avalanches are possible. This applies on steep slopes in all aspects, in the regions exposed to heavier precipitation in particular. In addition a latent danger of gliding avalanches exists, especially on steep grassy slopes below approximately 2200 m.

At elevated altitudes small wind slabs will form. They are in isolated cases prone to triggering on steep shady slopes above approximately 2200 m. The prevalence of avalanche prone locations and likelihood of triggering will increase with altitude.

Snowpack

Danger patterns

dp 2: gliding snow

dp 10: springtime scenario

In some regions up to 10 cm of snow, and even more in some localities, will fall today above approximately 1600 m. The old snowpack will be wet all the way through at intermediate and high altitudes. At low altitude hardly any snow is lying.

Tendency

Fresh wind slabs in the high Alpine regions. Loose snow avalanches as the day progresses.