

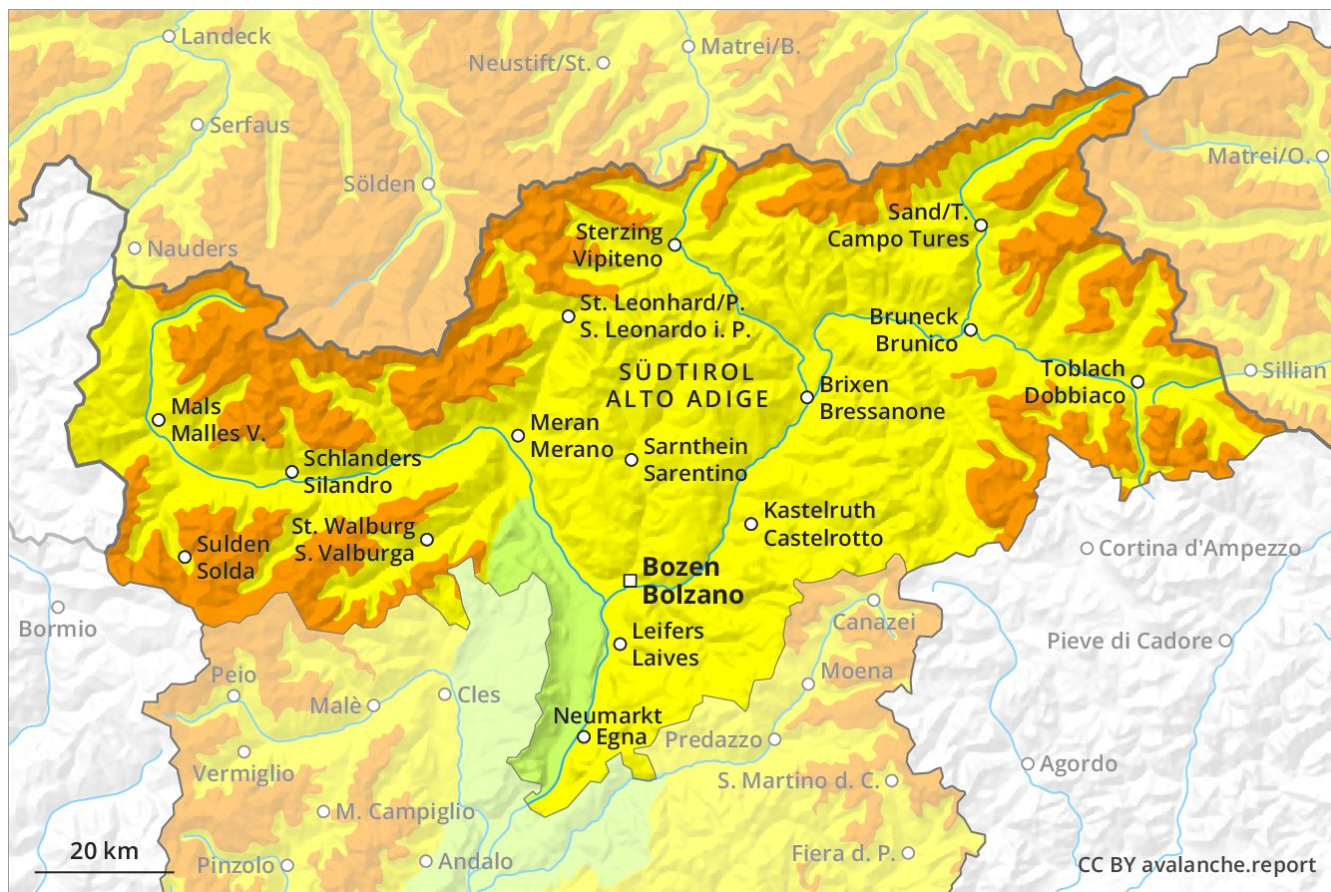
Avalanche Forecast

Monday 29 04 2019

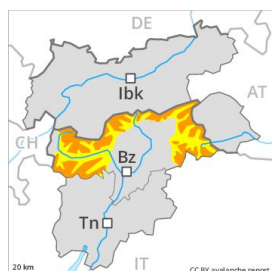
Published 28 04 2019, 17:00



Avalanche.report



Danger Level 3 - Considerable



Tendency: Decreasing avalanche danger
on Tuesday 30 04 2019



Wind-drifted
snow



Wet snow



The conditions are sometimes unfavourable for ski touring.

As a consequence of fresh snow and a strong wind, extensive wind slabs formed in the last few days. The avalanche prone locations are to be found in particular on wind-loaded slopes of all aspects above approximately 2200 m. They are barely recognisable because of the poor visibility. Especially slopes adjacent to ridgelines are especially precarious. Single skiers can release avalanches in some places, including dangerously large ones. On wind-loaded slopes and from starting zones at higher altitudes dry and moist avalanches are possible, even large ones in isolated cases. As the day progresses as a consequence of solar radiation there will be only a slight increase in the danger of moist and wet avalanches.

Snowpack

In particular from the Zillertal Alps via the Rieserferner Mountains to the Prags Dolomites fresh snow above approximately 1800 m. Over a wide area 20 to 50 cm of snow, and even more in some localities, has fallen in the last few days above approximately 2400 m. As a consequence of a strong to storm force wind from southerly directions, deep wind slabs formed. The wind slabs are lying on soft layers in particular on steep shady slopes. Large-grained weak layers exist in the bottom section of the snowpack especially here. Outgoing longwave radiation during the night will be reduced over a wide area. The surface of the snowpack will only just freeze. In some cases fresh snow and wind slabs are lying on an old snowpack that is wet all the way through. This applies in particular on steep sunny slopes below approximately 3000 m as well as on shady slopes below approximately 2400 m.

Tendency

Gradual decrease in danger of moist and wet avalanches as the temperature drops.

Danger Level 2 - Moderate



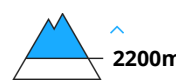
Tendency: Constant avalanche danger →
on Tuesday 30 04 2019



Wet snow



Wind-drifted snow



Wet small and medium sized avalanches.

As a consequence of warming during the day, the likelihood of wet small and medium sized avalanches being released will increase in particular on very steep shady slopes at intermediate and high altitudes. The rather small wind slabs of Friday are to be evaluated with care and prudence in particular in very steep terrain. Apart from the danger of being buried, restraint should be exercised as well in view of the danger of avalanches sweeping people along and giving rise to falls.

Snowpack

Danger patterns dp 10: springtime scenario

The old snowpack will be wet all the way through at intermediate and high altitudes. The fresh snow of Friday has bonded below approximately 2200 m.

Tendency

Only a little snow is lying.

Danger Level 2 - Moderate



Tendency: Constant avalanche danger →
on Tuesday 30 04 2019



Wet snow



2500m



Wind-drifted
snow



2400m

In the afternoon, individual wet and gliding avalanches are possible. Fresh wind slabs require caution.

The avalanche prone locations are to be found in particular on west to north to east facing wind-loaded slopes above approximately 2400 m. In regions neighbouring those that are subject to danger level 3 (considerable) and in the regions exposed to precipitation avalanche prone locations are more prevalent and the danger is slightly greater. As a consequence of warming during the day and solar radiation small and medium-sized dry and wet avalanches are possible.

Snowpack

As a consequence of a sometimes strong wind, wind slabs formed in the last few days adjacent to ridgelines as well as at high altitudes and in high Alpine regions. Outgoing longwave radiation during the night will be reduced. The surface of the snowpack has frozen to form a strong crust only at high altitudes and will soften during the day.