

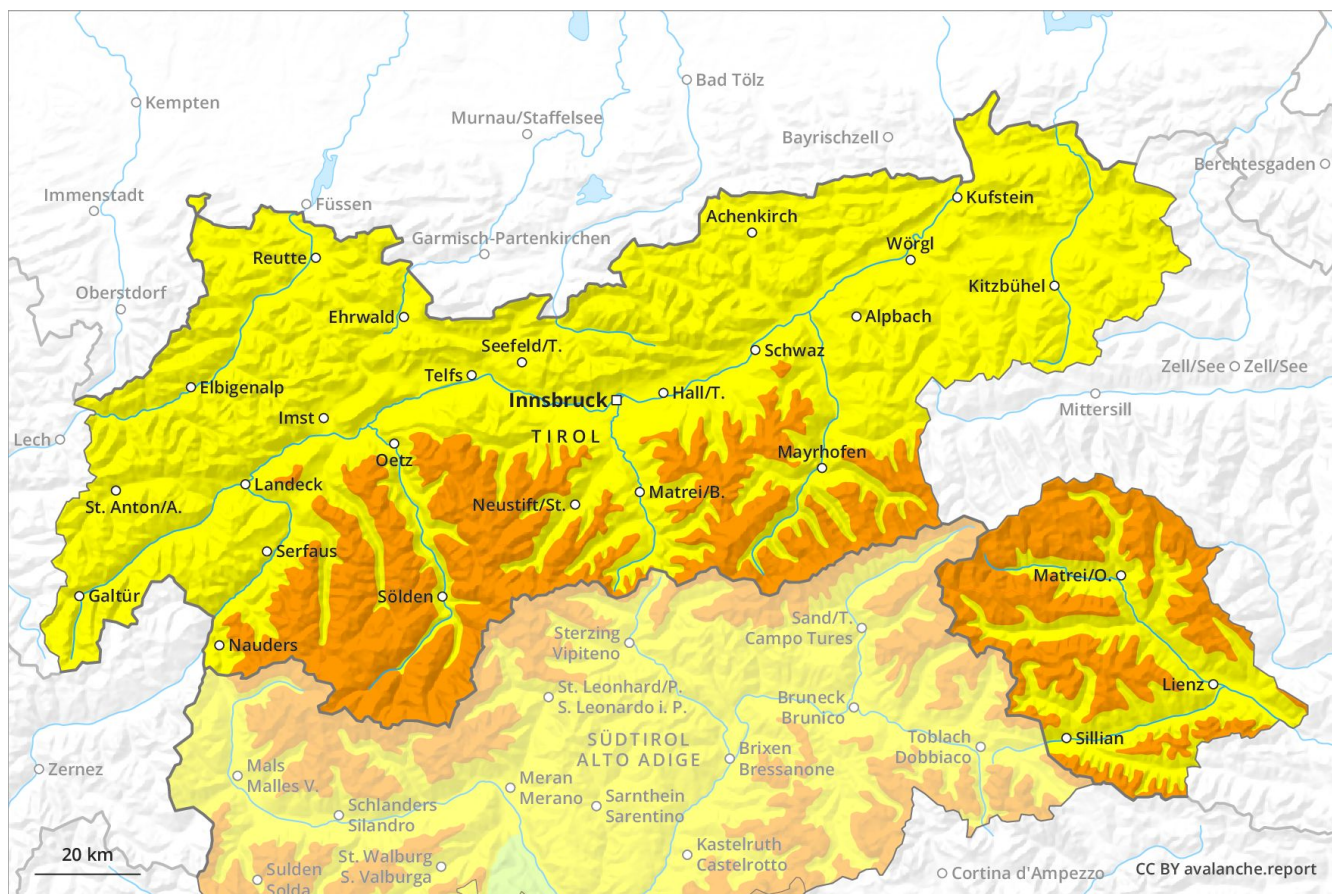
Avalanche Forecast

Tuesday 30 04 2019

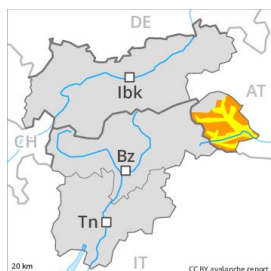
Published 29 04 2019, 17:00



Avalanche.report

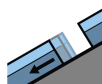


Danger Level 3 - Considerable



Tendency: Constant avalanche danger →

on Wednesday 01 05 2019



Gliding snow



2300m



Wet snow



2600m

Moist loose snow avalanches and gliding avalanches are the main danger.

As a consequence of warming during the day and the solar radiation, the likelihood of moist loose snow avalanches being released will increase appreciably in all aspects. In particular on very steep shady slopes these can penetrate even deep layers and reach large size in isolated cases.

In addition the fresh wind slabs in particular adjacent to ridgelines and at high altitudes are capable of being triggered in some locations, especially on very steep shady slopes above approximately 2400 m. The prevalence of avalanche prone locations and likelihood of triggering will increase with altitude. As a consequence of solar radiation individual natural avalanches are possible, in particular medium-sized ones, especially on very steep sunny slopes at high altitudes and in high Alpine regions adjacent to ridgelines. A certain danger of gliding avalanches and snow slides exists. This applies on steep grassy slopes below approximately 2300 m in all aspects.

Snowpack

Danger patterns

dp 2: gliding snow

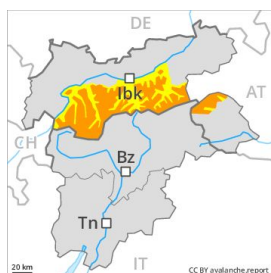
dp 6: cold, loose snow and wind

Over a wide area 30 to 50 cm of snow, and even more in some localities, has fallen in the last few days above approximately 1000 m. The wind was moderate to strong over a wide area. In some places fresh snow and wind slabs are lying on soft layers, in particular at high altitudes and in high Alpine regions on very steep shady slopes. The old snowpack will be wet all the way through at intermediate and high altitudes.

Tendency

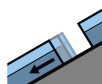
Fresh wind slabs in the high Alpine regions. Moist and wet avalanches as the day progresses.

Danger Level 3 - Considerable



Tendency: Constant avalanche danger →

on Wednesday 01 05 2019



Gliding snow



2300m



Wind-drifted snow



2400m

Moist loose snow avalanches and gliding avalanches are the main danger.

As a consequence of warming during the day, the likelihood of moist loose snow avalanches being released will increase appreciably in all aspects. In particular on very steep shady slopes these can penetrate even deep layers and reach large size in isolated cases.

In addition the fresh wind slabs in particular adjacent to ridgelines and at high altitudes are capable of being triggered in some locations, especially on very steep shady slopes above approximately 2400 m. The prevalence of avalanche prone locations and likelihood of triggering will increase with altitude.

A latent danger of gliding avalanches exists. This applies on steep grassy slopes below approximately 2300 m in all aspects.

Snowpack

Danger patterns

dp 2: gliding snow

dp 6: cold, loose snow and wind

Over a wide area 30 to 50 cm of snow, and even more in some localities, has fallen in the last few days above approximately 1000 m. The wind was moderate to strong over a wide area. Over a wide area 10 to 30 cm of snow will fall. In some places fresh snow and wind slabs are lying on soft layers, in particular at high altitudes and in high Alpine regions on very steep shady slopes. The old snowpack will be wet all the way through at intermediate and high altitudes.

Tendency

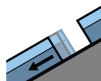
Fresh wind slabs in the high Alpine regions. Moist and wet avalanches as the day progresses.

Danger Level 2 - Moderate



Tendency: Constant avalanche danger →

on Wednesday 01 05 2019



Gliding snow



2300m



Wind-drifted
snow



2400m

Moist loose snow avalanches and gliding avalanches are the main danger.

As a consequence of warming during the day, the likelihood of moist loose snow avalanches being released will increase appreciably in all aspects. In particular on very steep shady slopes these can penetrate even deep layers and reach medium size.

In addition the fresh wind slabs in particular adjacent to ridgelines and at high altitudes are capable of being triggered in some locations, especially on very steep shady slopes above approximately 2400 m. The prevalence of avalanche prone locations and likelihood of triggering will increase with altitude.

A latent danger of gliding avalanches exists. This applies on steep grassy slopes below approximately 2300 m in all aspects.

Snowpack

Danger patterns

dp 2: gliding snow

dp 6: cold, loose snow and wind

Over a wide area 10 to 20 cm of snow, and even more in some localities, has fallen in the last few days above approximately 1000 m. Over a wide area 10 to 20 cm of snow, and even more in some localities, will fall. The wind will be moderate. In some places fresh snow and wind slabs are lying on soft layers, in particular at high altitudes and in high Alpine regions on very steep shady slopes. The old snowpack will be wet all the way through at intermediate and high altitudes.

Tendency

Fresh wind slabs in the high Alpine regions. Moist and wet avalanches as the day progresses.