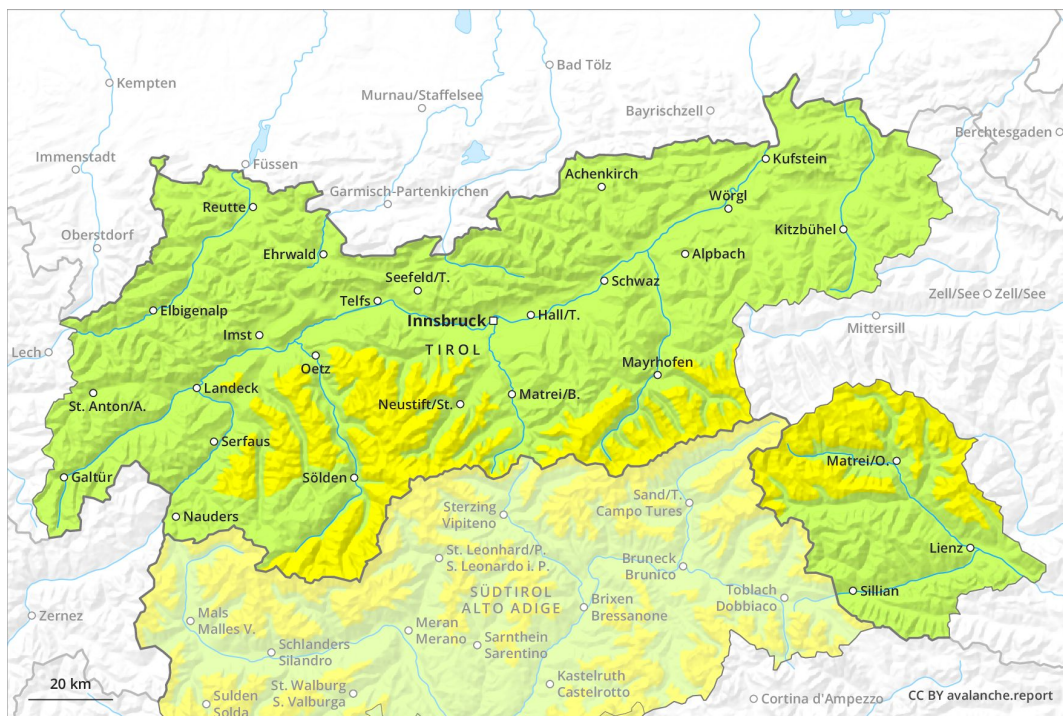
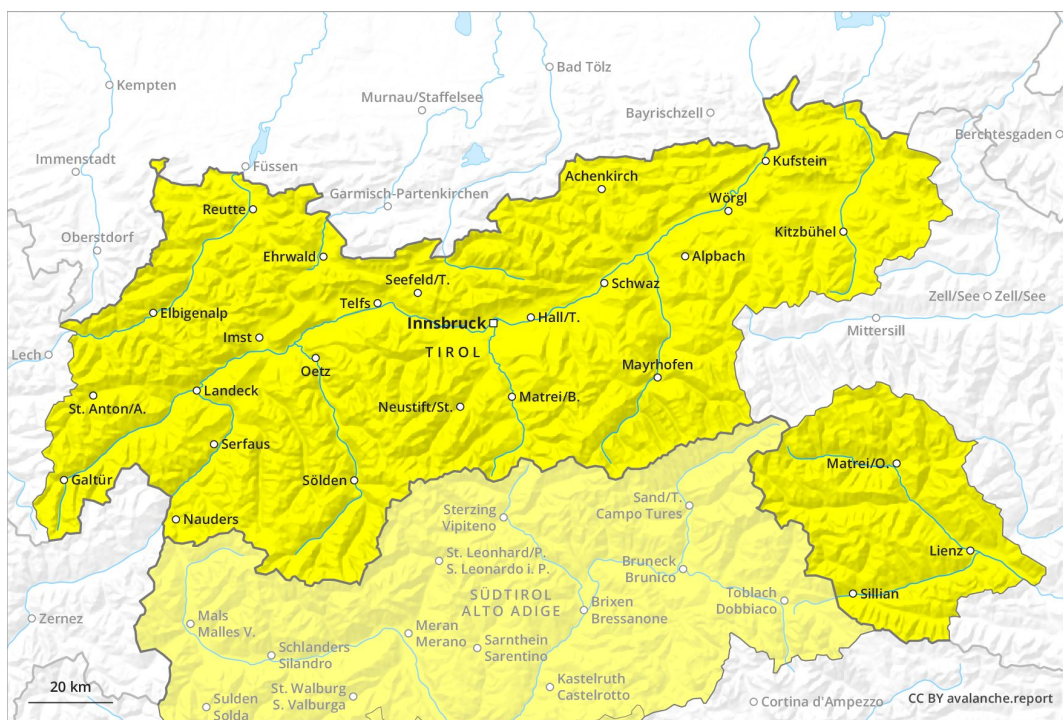




AM

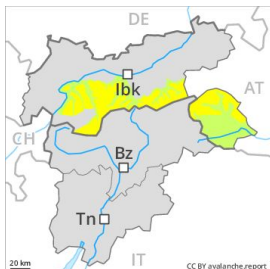


PM



Danger Level 2 - Moderate

AM:



Tendency: Constant avalanche danger →
 on Friday 03 05 2019



Wind-drifted snow



PM:



Tendency: Constant avalanche danger →
 on Friday 03 05 2019



Wet snow



Wind-drifted snow



A clear night will be followed in the early morning by favourable conditions generally, but the danger of wet avalanches will increase later. Loose snow avalanches and gliding avalanches are the main danger.

The backcountry touring conditions in the morning are favourable.

As the day progresses the likelihood of moist loose snow avalanches being released will increase gradually in all aspects. These can penetrate deep layers and reach large size in isolated cases. In the event of solar radiation caution is to be exercised in particular in the regions exposed to heavier precipitation.

In addition the fresh wind slabs are prone to triggering in some cases still, especially on very steep shady slopes above approximately 2800 m adjacent to ridgelines. The prevalence of avalanche prone locations and likelihood of triggering will increase with altitude. Mostly avalanches are medium-sized.

A certain danger of gliding avalanches exists. This applies on steep grassy slopes below approximately 2600 m.

In some localities increase in avalanche danger as a consequence of the precipitation, in particular in the afternoon.

Snowpack

Danger patterns

dp 10: springtime scenario

dp 6: cold, loose snow and wind

In some cases wind slabs are lying on soft layers. This applies in particular on very steep shady slopes above approximately 2800 m. Outgoing longwave radiation during the night will be good. The surface of the snowpack has frozen to form a strong crust and will soften during the day. The old snowpack will be wet all the way through at intermediate and high altitudes.

Tendency



The avalanche danger will increase.



Danger Level 2 - Moderate

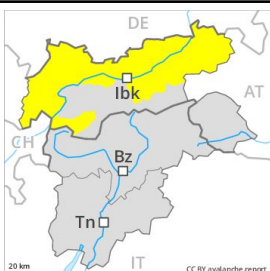
AM:



Tendency: Increasing avalanche danger
on Friday 03 05 2019



PM:



Tendency: Increasing avalanche danger
on Friday 03 05 2019



Wet snow



A clear night will be followed by favourable avalanche conditions, but the danger of wet avalanches will increase later.

The backcountry touring conditions in the morning are favourable.

As the day progresses the likelihood of loose snow avalanches being released will increase gradually in all aspects. Mostly these are rather small but can be released by a single winter sport participant.

In addition a certain danger of gliding avalanches exists. This applies on steep grassy slopes below approximately 2600 m.

In some localities increase in avalanche danger as a consequence of the precipitation, in particular in the afternoon.

Snowpack

Danger patterns

dp 10: springtime scenario

dp 3: rain

The surface of the snowpack has frozen to form a strong crust and will soften during the day. The fresh wind slabs have bonded well with the old snowpack. The old snowpack will be wet all the way through at intermediate and high altitudes.

Tendency

The avalanche danger will increase.