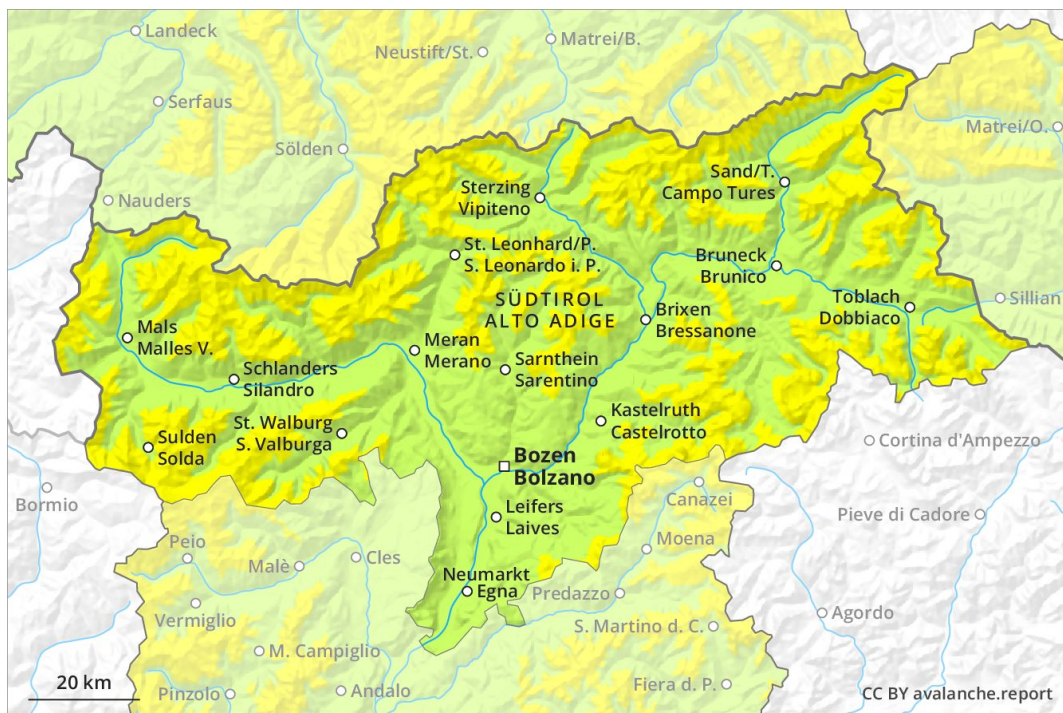
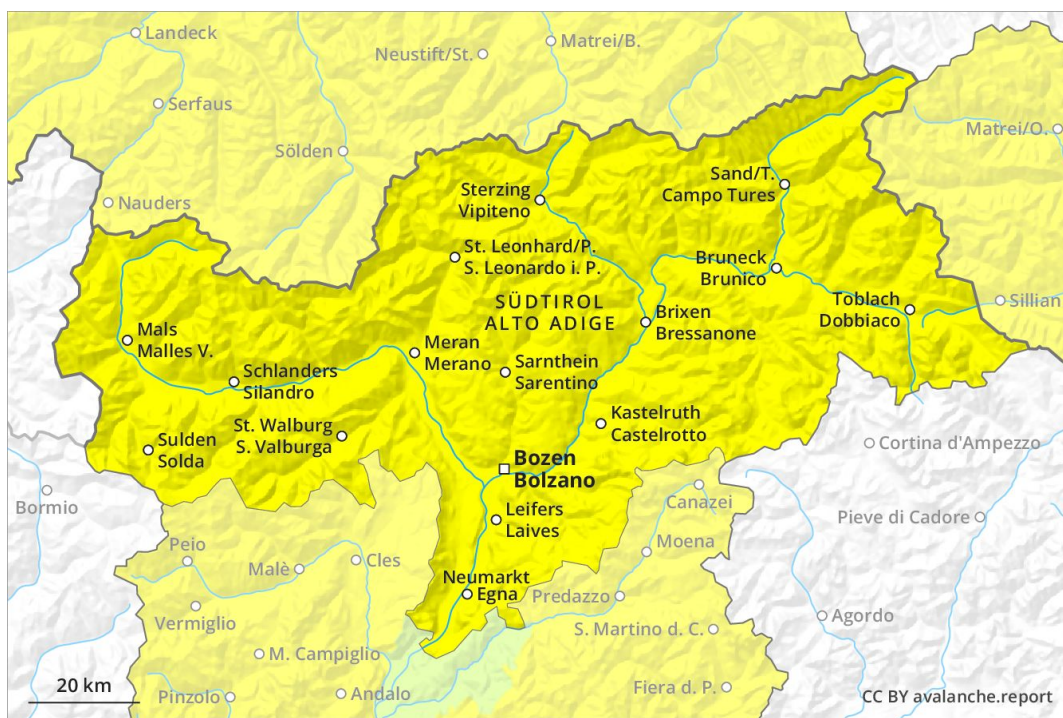


### AM

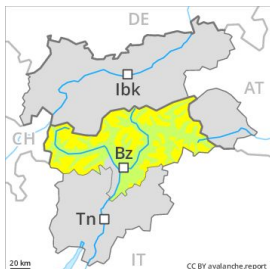


### PM



## Danger Level 2 - Moderate

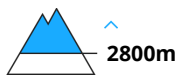
**AM:**



**Tendency: Constant avalanche danger** →  
 on Friday 03 05 2019



Wind-drifted snow



**PM:**



**Tendency: Constant avalanche danger** →  
 on Friday 03 05 2019



Wet snow



Wind-drifted snow



Loose snow avalanches and gliding avalanches are the main danger. Wind slabs are to be evaluated with care and prudence.

The backcountry touring conditions in the morning are quite favourable.

As a consequence of warming during the day and the solar radiation, the likelihood of loose snow avalanches being released will increase appreciably in all aspects. These can penetrate deep layers and reach large size in isolated cases.

In addition the somewhat older wind slabs in particular adjacent to ridgelines are capable of being triggered in some locations, especially on very steep shady slopes above approximately 2800 m. The prevalence of avalanche prone locations and likelihood of triggering will increase with altitude. Mostly avalanches are medium-sized.

A certain danger of gliding avalanches exists. This applies on steep grassy slopes in the regions with a lot of snow. In some localities increase in avalanche danger as a consequence of the precipitation, in particular in the afternoon.

### Snowpack

**Danger patterns**

dp 10: springtime scenario

dp 3: rain

The fresh wind slabs have bonded quite well with the old snowpack at intermediate and high altitudes. In some cases wind slabs are lying on soft layers. This applies in particular on very steep shady slopes above approximately 2800 m. Outgoing longwave radiation during the night will be quite good. The old snowpack will be wet all the way through at intermediate and high altitudes.

### Tendency

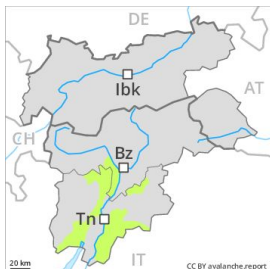


Moderate, level 2. Some snow will fall.

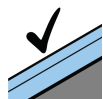


## Danger Level 2 - Moderate

**AM:**



**Tendency: Constant avalanche danger** →  
on Friday 03 05 2019

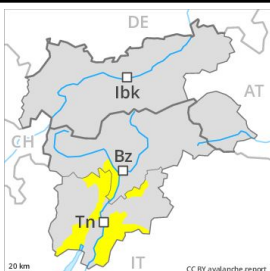


Favourable situation



Treeline

**PM:**



**Tendency: Constant avalanche danger** →  
on Friday 03 05 2019



Wet snow



Treeline

As a consequence of warming during the day, the likelihood of wet loose snow avalanches being released will increase.

From origins in starting zones at higher altitudes individual natural avalanches are possible, but they will be mostly small. As a consequence of warming during the day, the likelihood of moist and wet avalanches being released will increase for a while in particular on steep grassy slopes at high altitude. Backcountry touring calls for defensive route selection.

### Snowpack

The fresh snow and wind slabs of the last few days have bonded quite well with the old snowpack in all aspects. The snowpack will be generally moist. Hardly any snow is lying on south facing slopes.

### Tendency

The conditions are spring-like. As a consequence of the snowfall the prevalence of avalanche prone locations will increase towards the evening.