

# Avalanche Forecast

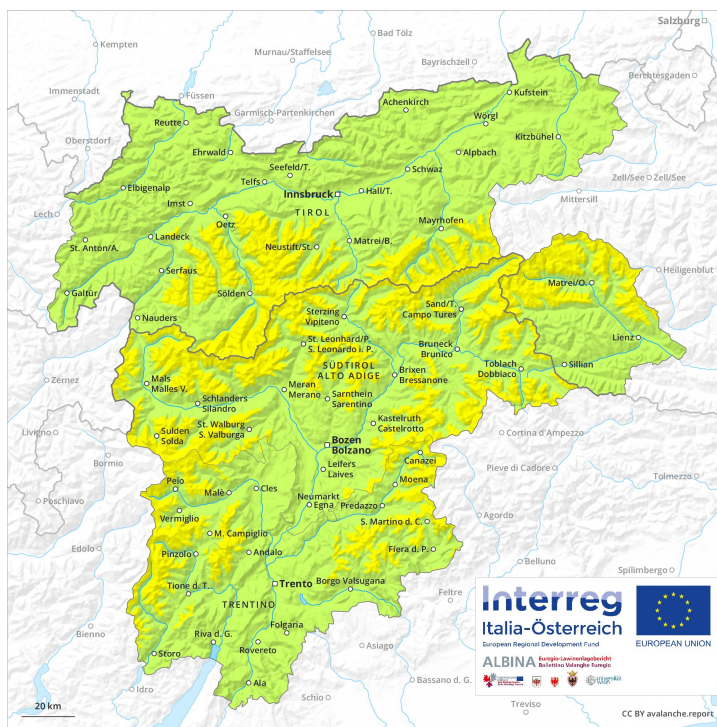
## Thursday 02 05 2019

Published 01 05 2019, 17:00

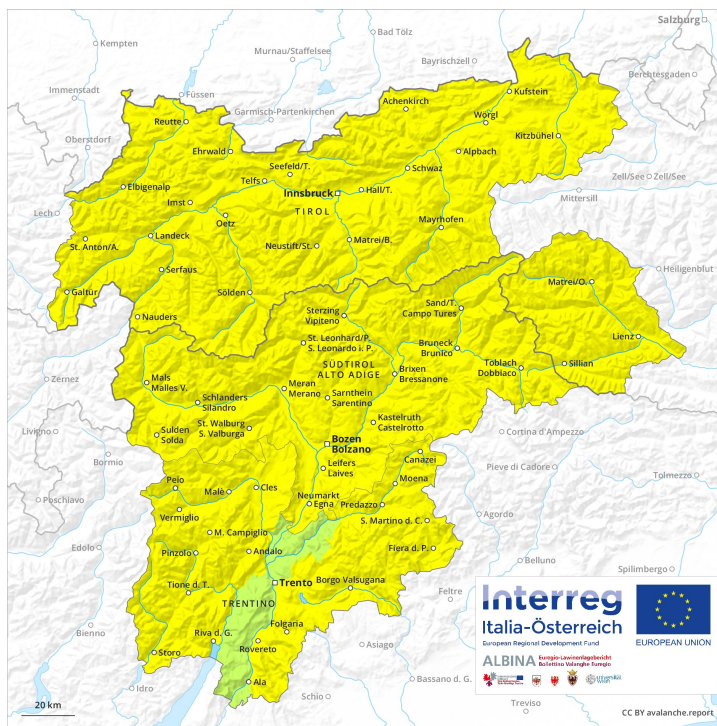


Avalanche.report

### AM

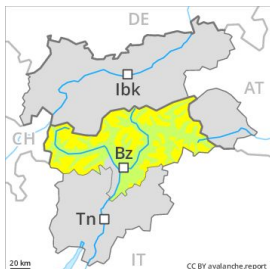


### PM



## Danger Level 2 - Moderate

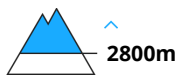
**AM:**



**Tendency: Constant avalanche danger** →  
 on Friday 03 05 2019



Wind-drifted snow



**PM:**



**Tendency: Constant avalanche danger** →  
 on Friday 03 05 2019



Wet snow



Wind-drifted snow



Loose snow avalanches and gliding avalanches are the main danger. Wind slabs are to be evaluated with care and prudence.

The backcountry touring conditions in the morning are quite favourable.

As a consequence of warming during the day and the solar radiation, the likelihood of loose snow avalanches being released will increase appreciably in all aspects. These can penetrate deep layers and reach large size in isolated cases.

In addition the somewhat older wind slabs in particular adjacent to ridgelines are capable of being triggered in some locations, especially on very steep shady slopes above approximately 2800 m. The prevalence of avalanche prone locations and likelihood of triggering will increase with altitude. Mostly avalanches are medium-sized.

A certain danger of gliding avalanches exists. This applies on steep grassy slopes in the regions with a lot of snow. In some localities increase in avalanche danger as a consequence of the precipitation, in particular in the afternoon.

### Snowpack

**Danger patterns**

dp 10: springtime scenario

dp 3: rain

The fresh wind slabs have bonded quite well with the old snowpack at intermediate and high altitudes. In some cases wind slabs are lying on soft layers. This applies in particular on very steep shady slopes above approximately 2800 m. Outgoing longwave radiation during the night will be quite good. The old snowpack will be wet all the way through at intermediate and high altitudes.

### Tendency



Moderate, level 2. Some snow will fall.



## Danger Level 2 - Moderate

**AM:**



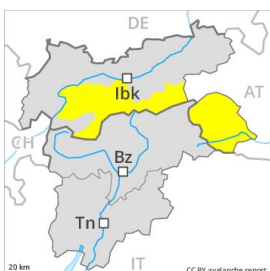
**Tendency: Constant avalanche danger** →  
 on Friday 03 05 2019



Wind-drifted snow



**PM:**



**Tendency: Constant avalanche danger** →  
 on Friday 03 05 2019



Wet snow



Wind-drifted snow



A clear night will be followed in the early morning by favourable conditions generally, but the danger of wet avalanches will increase later. Loose snow avalanches and gliding avalanches are the main danger.

The backcountry touring conditions in the morning are favourable.

As the day progresses the likelihood of moist loose snow avalanches being released will increase gradually in all aspects. These can penetrate deep layers and reach large size in isolated cases. In the event of solar radiation caution is to be exercised in particular in the regions exposed to heavier precipitation.

In addition the fresh wind slabs are prone to triggering in some cases still, especially on very steep shady slopes above approximately 2800 m adjacent to ridgelines. The prevalence of avalanche prone locations and likelihood of triggering will increase with altitude. Mostly avalanches are medium-sized.

A certain danger of gliding avalanches exists. This applies on steep grassy slopes below approximately 2600 m.

In some localities increase in avalanche danger as a consequence of the precipitation, in particular in the afternoon.

## Snowpack

**Danger patterns**

dp 10: springtime scenario

dp 6: cold, loose snow and wind

In some cases wind slabs are lying on soft layers. This applies in particular on very steep shady slopes above approximately 2800 m. Outgoing longwave radiation during the night will be good. The surface of the snowpack has frozen to form a strong crust and will soften during the day. The old snowpack will be wet all the way through at intermediate and high altitudes.

## Tendency

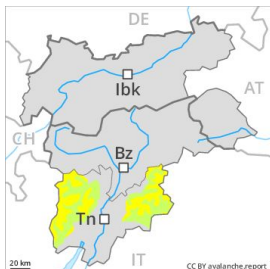


The avalanche danger will increase.



## Danger Level 2 - Moderate

**AM:**



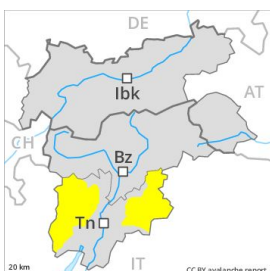
**Tendency: Constant avalanche danger** →  
 on Friday 03 05 2019



Wind-drifted  
 snow



**PM:**



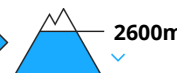
**Tendency: Constant avalanche danger** →  
 on Friday 03 05 2019



Wind-drifted  
 snow



Wet snow



The backcountry touring conditions remain wintry at high altitude.

The backcountry touring conditions in the morning, after a clear night, are mostly favourable. In the afternoon as a consequence of warming during the day there will be a gradual increase in the danger of moist and wet avalanches. As a consequence of fresh snow and wind, extensive wind slabs formed in the last few days. The avalanche prone locations are to be found in particular on west to north to southeast facing wind-loaded slopes above approximately 2000 m. Also slopes adjacent to ridgelines are especially precarious. Single skiers can release avalanches in some places, including large ones. On wind-loaded slopes and from starting zones at higher altitudes individual natural avalanches are possible, in particular medium-sized ones. Backcountry touring calls for experience in the assessment of avalanche danger and careful route selection.

### Snowpack

The surface of the snowpack will freeze, but a strong crust will not form and will soften during the day. As a consequence of fresh snow and wind, deep wind slabs formed in the last few days in particular adjacent to ridgelines. The wind slabs are lying on soft layers in particular on steep shady slopes. They are mostly easy to recognise but can be released easily especially at their margins. In some cases fresh snow and wind slabs are lying on an old snowpack that is wet all the way through. This applies in particular on steep sunny slopes below approximately 3000 m and on shady slopes in particular below approximately 2400 m. Isolated avalanche prone weak layers exist in the bottom section of the snowpack especially in shady places that are protected from the wind.

### Tendency

Temporary increase in avalanche danger as a consequence of warming during the day. As a consequence

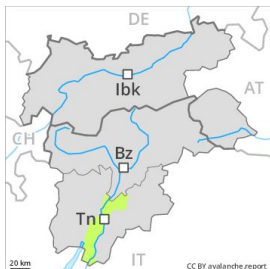


of the snowfall the avalanche prone locations will become more prevalent towards the evening.

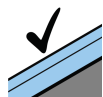


## Danger Level 2 - Moderate

**AM:**



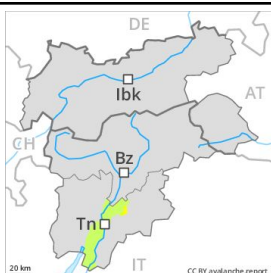
**Tendency: Constant avalanche danger** →  
 on Friday 03 05 2019



Favourable situation



**PM:**



**Tendency: Constant avalanche danger** →  
 on Friday 03 05 2019



Wet snow



**Wet and gliding avalanches especially on steep grassy slopes.**

As a consequence of warming during the day, the likelihood of wet loose snow avalanches being released will increase in particular on very steep shady slopes at intermediate and high altitudes. Apart from the danger of being buried, restraint should be exercised as well in view of the danger of avalanches sweeping people along and giving rise to falls.

### Snowpack

The fresh snow and wind slabs of the last few days are lying on the quite favourable surface of an old snowpack in all aspects above approximately 1800 m. Only a little snow is lying on south facing slopes.

### Tendency

As a consequence of the snowfall the prevalence of avalanche prone locations will increase towards the evening.



## Danger Level 2 - Moderate

**AM:**



**Tendency: Increasing avalanche danger**  
on Friday 03 05 2019



**PM:**



**Tendency: Increasing avalanche danger**  
on Friday 03 05 2019



Wet snow



A clear night will be followed by favourable avalanche conditions, but the danger of wet avalanches will increase later.

The backcountry touring conditions in the morning are favourable.

As the day progresses the likelihood of loose snow avalanches being released will increase gradually in all aspects. Mostly these are rather small but can be released by a single winter sport participant.

In addition a certain danger of gliding avalanches exists. This applies on steep grassy slopes below approximately 2600 m.

In some localities increase in avalanche danger as a consequence of the precipitation, in particular in the afternoon.

### Snowpack

**Danger patterns**

dp 10: springtime scenario

dp 3: rain

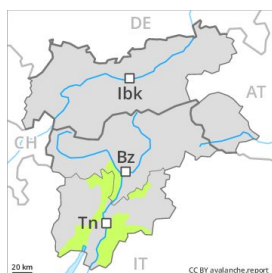
The surface of the snowpack has frozen to form a strong crust and will soften during the day. The fresh wind slabs have bonded well with the old snowpack. The old snowpack will be wet all the way through at intermediate and high altitudes.

### Tendency

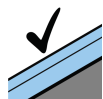
The avalanche danger will increase.

## Danger Level 2 - Moderate

**AM:**



**Tendency: Constant avalanche danger** →  
 on Friday 03 05 2019

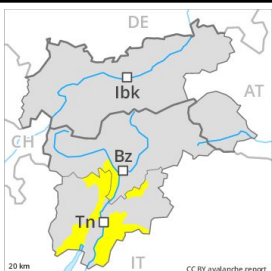


Favourable situation



Treeline

**PM:**



**Tendency: Constant avalanche danger** →  
 on Friday 03 05 2019



Wet snow



Treeline

As a consequence of warming during the day, the likelihood of wet loose snow avalanches being released will increase.

From origins in starting zones at higher altitudes individual natural avalanches are possible, but they will be mostly small. As a consequence of warming during the day, the likelihood of moist and wet avalanches being released will increase for a while in particular on steep grassy slopes at high altitude. Backcountry touring calls for defensive route selection.

### Snowpack

The fresh snow and wind slabs of the last few days have bonded quite well with the old snowpack in all aspects. The snowpack will be generally moist. Hardly any snow is lying on south facing slopes.

### Tendency

The conditions are spring-like. As a consequence of the snowfall the prevalence of avalanche prone locations will increase towards the evening.