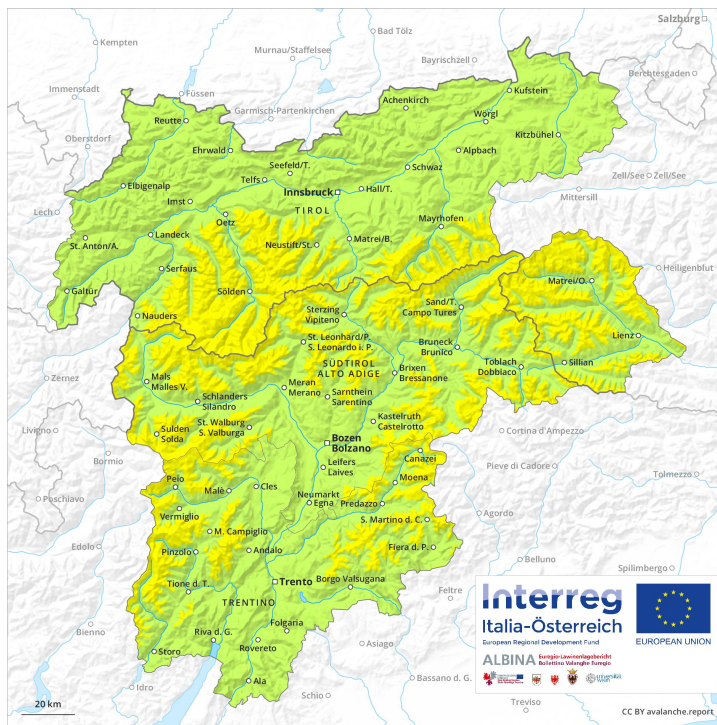
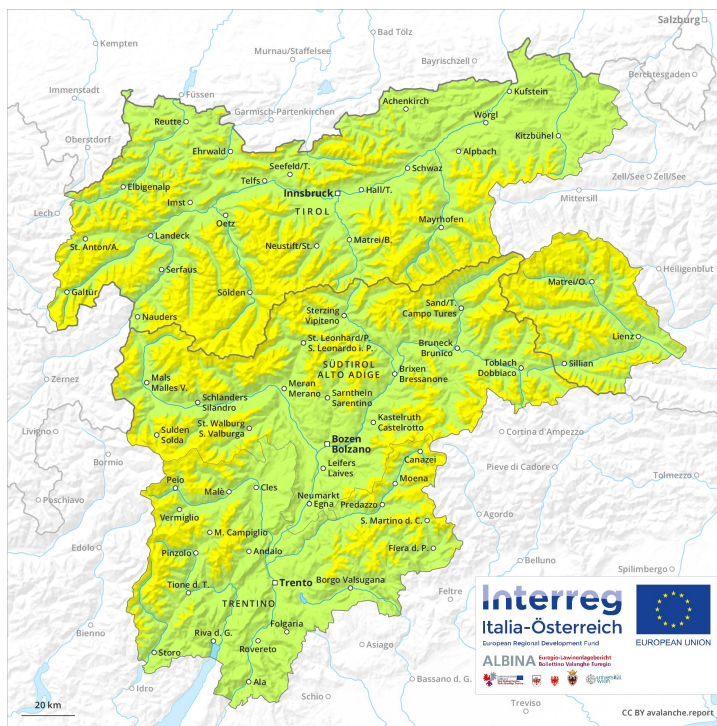




AM

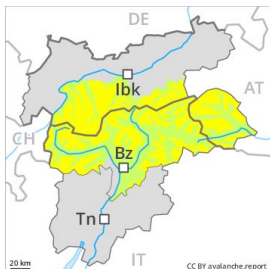


PM



Danger Level 2 - Moderate

AM:



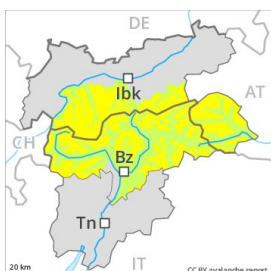
Tendency: Increasing avalanche danger
 on Sunday 05 05 2019



Wind-drifted
 snow



PM:



Tendency: Increasing avalanche danger
 on Sunday 05 05 2019



Wind-drifted
 snow



Wind slabs at high altitude. The number and size of avalanche prone locations will increase in the afternoon.

In the late morning a quite favourable avalanche situation will be encountered over a wide area. The older wind slabs of last week represent the main danger. Dry avalanches can in some cases be released by a single winter sport participant and reach medium size, especially on very steep slopes above approximately 2800 m in all aspects.

Gradual increase in danger of dry avalanches in the afternoon. As a consequence of fresh snow and wind, sometimes avalanche prone wind slabs will form. The avalanche prone locations are to be found in particular in gullies and bowls, and behind abrupt changes in the terrain above approximately 2400 m. The prevalence of avalanche prone locations and likelihood of triggering will increase with altitude. They are barely recognisable because of the poor visibility.

On steep grassy slopes snow slides are possible as a consequence of the fresh snow, in the regions exposed to heavier precipitation especially at low and intermediate altitudes.

Snowpack

Danger patterns

dp 6: cold, loose snow and wind

dp 4: cold following warm / warm following cold

Faceted weak layers exist in the top section of the snowpack above approximately 2800 m.

Over a wide area 10 to 20 cm of snow, and even more in some localities, will fall in the afternoon above approximately 1000 m. The wind will transport the fresh snow significantly. Fresh wind slabs are lying on soft layers especially on steep shady slopes above approximately 2400 m.

The old snowpack will be wet all the way through at intermediate and high altitudes.

Tendency



Further increase in avalanche danger as a consequence of fresh snow and strong wind. Considerable, level 3.



Danger Level 2 - Moderate

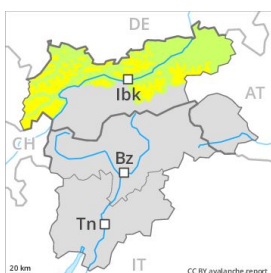
AM:



Tendency: Increasing avalanche danger
 on Sunday 05 05 2019



PM:



Tendency: Increasing avalanche danger
 on Sunday 05 05 2019



Wind-drifted
 snow



Wind slabs at high altitude. The number and size of avalanche prone locations will increase as the day progresses.

In the late morning a low avalanche danger will be encountered over a wide area.

Gradual increase in danger of dry avalanches in the afternoon. As a consequence of fresh snow and wind, sometimes avalanche prone wind slabs will form. The avalanche prone locations are to be found in particular in gullies and bowls, and behind abrupt changes in the terrain above approximately 2400 m. The prevalence of avalanche prone locations and likelihood of triggering will increase with altitude. They are barely recognisable because of the poor visibility.

On steep grassy slopes snow slides are possible as a consequence of the fresh snow, in the regions exposed to heavier precipitation especially at low and intermediate altitudes.

Snowpack

Danger patterns

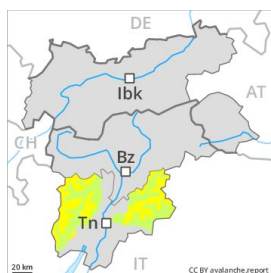
dp 6: cold, loose snow and wind

Over a wide area 10 to 20 cm of snow, and even more in some localities, will fall in the afternoon above approximately 1000 m. The northwesterly wind will transport the fresh snow significantly. Fresh wind slabs are lying on soft layers especially on steep shady slopes above approximately 2400 m. The old snowpack will be wet all the way through at intermediate and high altitudes.

Tendency

Increase in avalanche danger as a consequence of fresh snow and strong wind. Considerable, level 3.

Danger Level 2 - Moderate



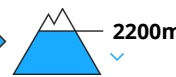
Tendency: Increasing avalanche danger
on Sunday 05 05 2019



Wind-drifted
snow



Wet snow



Wind slabs are to be evaluated with care and prudence. The avalanche prone locations are sometimes covered with fresh snow and are barely recognisable because of the poor visibility.

The backcountry touring conditions in the morning are mostly favourable. In the afternoon as a consequence of the precipitation there will be a gradual increase in the danger of dry and moist avalanches. On wind-loaded slopes and from starting zones at higher altitudes individual natural avalanches are possible, in particular medium-sized ones. Single skiers can release avalanches in isolated cases, including large ones. The avalanche prone locations are to be found in particular on wind-loaded slopes of all aspects and in gullies and bowls in all aspects above approximately 2400 m. Also slopes adjacent to ridgelines are especially precarious. These avalanche prone locations are sometimes covered with fresh snow and are barely recognisable because of the poor visibility. Backcountry touring calls for experience in the assessment of avalanche danger and careful route selection.

Snowpack

10 to 20 cm of snow, and even more in some localities, will fall from early morning above approximately 1600 m. As a consequence of northwesterly wind, large surface-area wind slabs will form in particular adjacent to ridgelines. The wind slabs are lying on soft layers in particular on steep shady slopes above approximately 2400 m. The old snowpack remains moist below approximately 2200 m. Isolated avalanche prone weak layers exist in the bottom section of the snowpack especially in shady places that are protected from the wind.

Tendency

Gradual increase in avalanche danger as a consequence of fresh snow and strong wind.

Danger Level 1 - Low

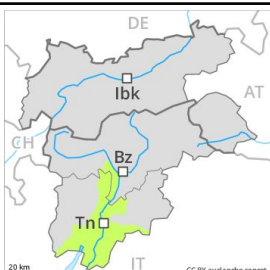
AM:



Tendency: Increasing avalanche danger
on Sunday 05 05 2019



PM:



Tendency: Increasing avalanche danger
on Sunday 05 05 2019



The number and size of avalanche prone locations will increase in the afternoon.

In the late morning a quite favourable avalanche situation will be encountered over a wide area. The older wind slabs of last week represent the main danger. Slight increase in danger of dry avalanches in the afternoon. The prevalence of avalanche prone locations and likelihood of triggering will increase with altitude. They are barely recognisable because of the poor visibility.

On steep grassy slopes snow slides are possible as a consequence of the fresh snow, in the regions exposed to heavier precipitation especially at low and intermediate altitudes.

Snowpack

Danger patterns

dp 6: cold, loose snow and wind

Over a wide area 10 to 15 cm of snow, and even more in some localities, will fall in the afternoon above approximately 1000 m. The old snowpack will be wet all the way through at intermediate and high altitudes.

Tendency

Increase in avalanche danger as a consequence of fresh snow and strong wind.