

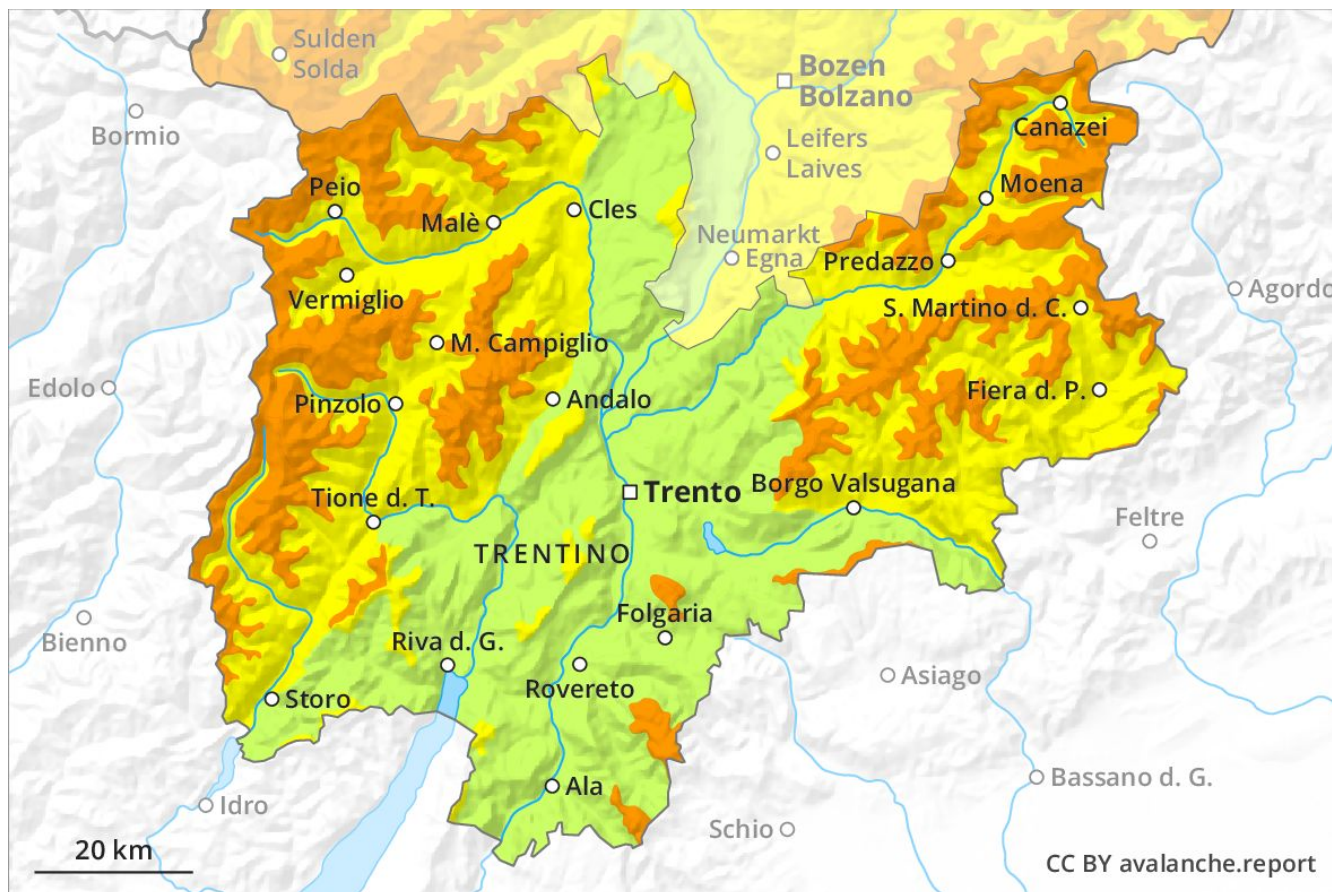
Avalanche Forecast

Sunday 05 05 2019

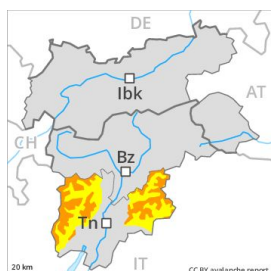
Published 04 05 2019, 17:00



Avalanche.report



Danger Level 3 - Considerable



Tendency: Constant avalanche danger →
on Monday 06 05 2019



Wind-drifted
snow



2400m



New snow



Treeline

Fresh snow and wind slabs require caution. The avalanche prone locations are sometimes covered with fresh snow and are barely recognisable because of the poor visibility.

In the early morning as the snowfall becomes more intense there will be a rapid increase in the avalanche danger to level 3 (considerable). On wind-loaded slopes and from starting zones at higher altitudes more frequent natural avalanches are possible, but they can reach medium size in some cases. Single backcountry tourers can release avalanches in many places. This applies even in case of a small load. The avalanche prone locations are to be found in particular on wind-loaded slopes of all aspects and in gullies and bowls in all aspects above approximately 2000 m. Also slopes adjacent to ridgelines are especially precarious. Backcountry touring calls for experience in the assessment of avalanche danger and careful route selection.

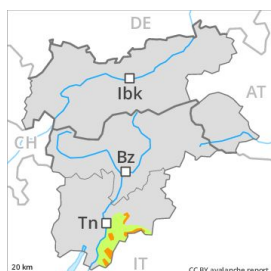
Snowpack

Over a wide area 20 to 30 cm of snow, and up to 40 cm in some localities, will fall from early morning above approximately 1000 m. As a consequence of northerly wind, sometimes avalanche prone wind slabs will form in particular adjacent to ridgelines. The wind slabs are lying on soft layers in particular on steep shady slopes above approximately 2400 m. The old snowpack remains moist below approximately 2200 m. Isolated avalanche prone weak layers exist in the bottom section of the snowpack especially in shady places that are protected from the wind.

Tendency

As a consequence of fresh snow and wind a considerable avalanche danger will persist.

Danger Level 3 - Considerable



Tendency: Constant avalanche danger →
on Monday 06 05 2019



Wind-drifted
snow



New snow



Fresh snow and wind slabs require caution. The avalanche prone locations are sometimes covered with fresh snow and are barely recognisable because of the poor visibility.

In the early morning as the snowfall becomes more intense there will be a rapid increase in the avalanche danger to level 3 (considerable). On wind-loaded slopes and from starting zones at higher altitudes more frequent natural avalanches are possible, but they can reach medium size in some cases. Single backcountry tourers can release avalanches in many places. This applies even in case of a small load. The avalanche prone locations are to be found in particular on wind-loaded slopes of all aspects and in gullies and bowls in all aspects above approximately 2000 m. Also slopes adjacent to ridgelines are especially precarious. Backcountry touring calls for experience in the assessment of avalanche danger and careful route selection.

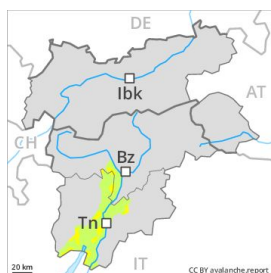
Snowpack

Over a wide area 20 to 30 cm of snow, and up to 40 cm in some localities, will fall from early morning above approximately 1000 m. As a consequence of northerly wind, sometimes avalanche prone wind slabs will form in particular adjacent to ridgelines. The wind slabs are lying on soft layers in particular on steep shady slopes above approximately 2400 m. The old snowpack remains moist below approximately 2200 m.

Tendency

At elevated altitudes a considerable avalanche danger will persist.

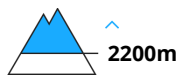
Danger Level 2 - Moderate



Tendency: Constant avalanche danger →
on Monday 06 05 2019



Wind-drifted
snow



New snow



In some regions increase in danger of dry avalanches as the snowfall level drops.

At elevated altitudes a moderate avalanche danger will prevail. Small and, in isolated cases, medium-sized natural avalanches are possible in particular on steep grassy slopes. The avalanche prone locations are rather rare but are barely recognisable because of the poor visibility. Apart from the danger of being buried, restraint should be exercised as well in view of the danger of avalanches sweeping people along and giving rise to falls.

Snowpack

In some localities 20 to 30 cm of snow, and even more in some localities, will fall from early morning above approximately 1000 m. As a consequence of northerly wind, sometimes avalanche prone wind slabs will form in particular adjacent to ridgelines. The wind slabs are bonding only slowly with the old snowpack in all aspects. The old snowpack will be in most cases moist.

Tendency

At elevated altitudes a moderate avalanche danger will persist.