

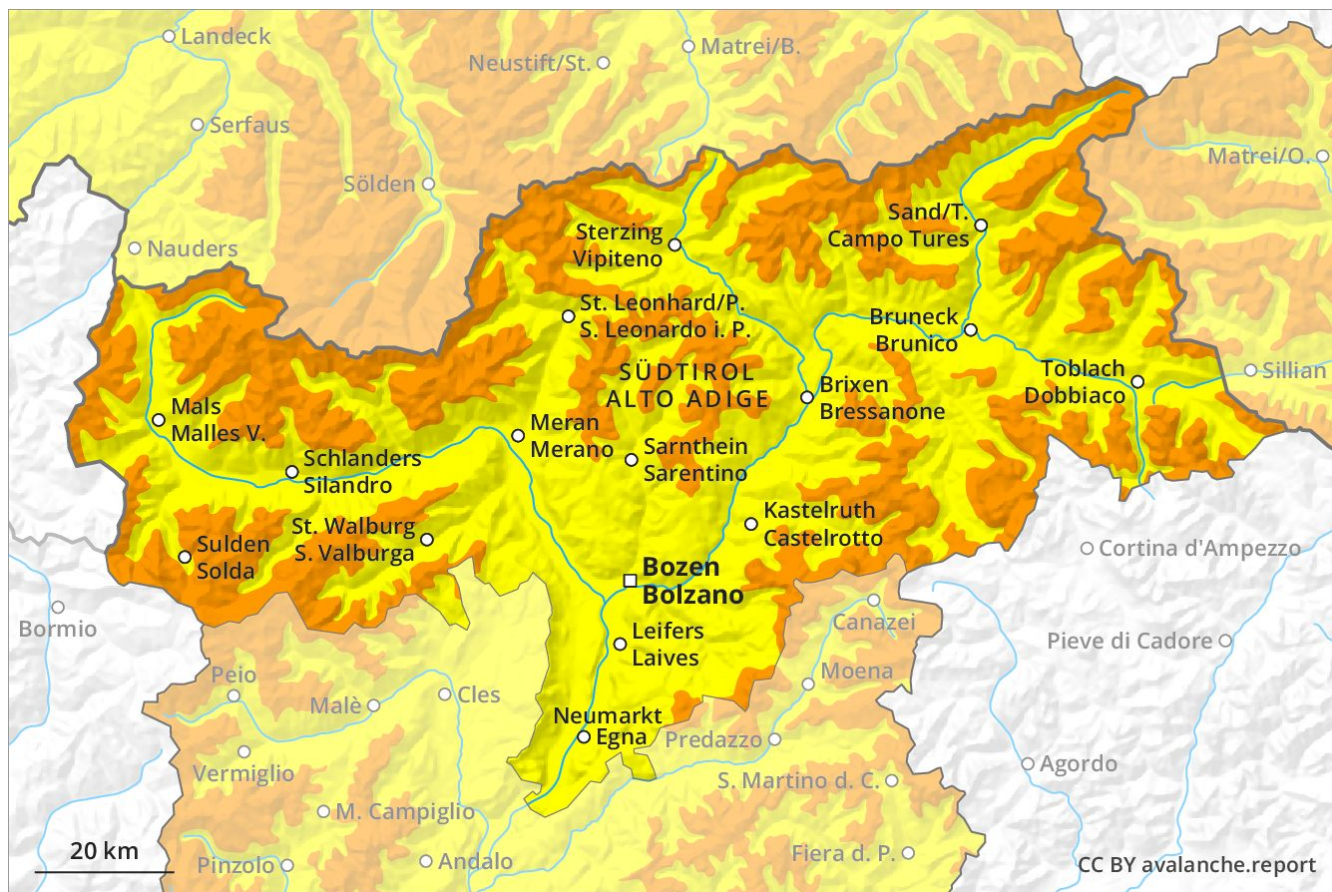
Avalanche Forecast

Monday 06 05 2019

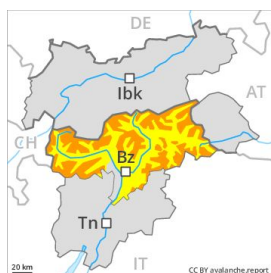
Published 05 05 2019, 17:00



Avalanche.report



Danger Level 3 - Considerable



Treeline

Tendency: Constant avalanche danger →

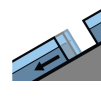
on Tuesday 07 05 2019



Wind-drifted
snow



Treeline



Gliding snow



2400m

Fresh wind slabs represent the main danger.

As a consequence of fresh snow and wind, sometimes avalanche prone wind slabs formed. Avalanches can as before be released by a single winter sport participant and reach large size in isolated cases. The avalanche prone locations are to be found in particular in gullies and bowls, and behind abrupt changes in the terrain at high altitudes and in high Alpine regions. As a consequence of solar radiation more frequent medium-sized and, in isolated cases, large natural avalanches are possible, in particular in the regions exposed to heavier precipitation. The prevalence of avalanche prone locations and likelihood of triggering will increase with altitude.

On steep grassy slopes gliding avalanches and snow slides are possible, in the regions exposed to heavier precipitation especially at low and intermediate altitudes.

Snowpack

Danger patterns

dp 6: cold, loose snow and wind

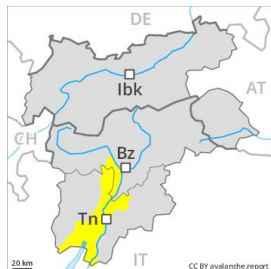
The strong wind has transported a lot of snow. Fresh wind slabs are lying on soft layers especially on steep shady slopes above approximately 2400 m.

The old snowpack will be wet all the way through at intermediate and high altitudes.

Tendency

Decrease in danger of dry avalanches. Increase in danger of moist and wet avalanches as a consequence of warming during the day and solar radiation.

Danger Level 2 - Moderate



Tendency: Decreasing avalanche danger
on Tuesday 07 05 2019



Wind-drifted
snow



2200m



New snow



1200m

At elevated altitudes a moderate avalanche danger will still be encountered.

Small and, in isolated cases, medium-sized natural avalanches are possible in particular on steep grassy slopes. The avalanche prone locations are rather rare and are clearly recognisable to the trained eye. Apart from the danger of being buried, restraint should be exercised as well in view of the danger of avalanches sweeping people along and giving rise to falls.

Snowpack

As a consequence of northerly wind, sometimes avalanche prone wind slabs formed in particular adjacent to ridgelines. The wind slabs are bonding only slowly with the old snowpack in all aspects. The old snowpack will be in most cases moist.