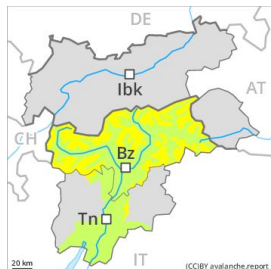
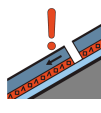


Danger Level 2 - Moderate



Tendency: Constant avalanche danger →
on Wednesday 08 01 2020



Persistent
weak layer



Wind-drifted
snow



Fresh wind slabs require caution.

The fresh wind slabs must be evaluated with care and prudence in particular on very steep west, north and southeast facing slopes above approximately 2200 m. Single backcountry tourers can release avalanches in some places. Mostly they are rather small. The older wind slabs can still be released. Caution is to be exercised at their margins in particular. Avalanches can be released in the old snowpack and reach large size in isolated cases. This applies in particular adjacent to ridgelines. In steep terrain there is a danger of falling on the hard crust.

Snowpack

The storm force wind has transported the fresh and old snow significantly. The snowpack will be subject to considerable local variations over a wide area. In some cases the wind slabs have bonded still only poorly with each other and the old snowpack. They are to be found in particular adjacent to ridgelines and in gullies and bowls and at high altitudes.

Tendency

The avalanche danger will persist. The weather will be mostly sunny.