



## Danger Level 2 - Moderate

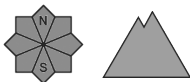


**Tendency: Constant avalanche danger** →

on Thursday 30 01 2020



Wind-drifted  
snow



### Fresh wind slabs require caution.

As a consequence of fresh snow and strong wind the wind slabs will increase in size until the early morning. The prevalence of avalanche prone locations and likelihood of triggering will increase. The fresh wind slabs can be released by a single winter sport participant in some cases in particular on steep shady slopes. From origins in starting zones at higher altitudes dry slab avalanches are possible, but they will be mostly small. They can be released in the weakly bonded old snow in particular in areas where the snow cover is rather shallow.

### Snowpack

#### Danger patterns

dp 5: snowfall after a long period of cold

dp 6: cold, loose snow and wind

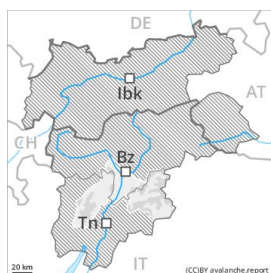
Over a wide area 5 to 15 cm of snow. will fall in the next few hours in all altitude zones. The strong wind will transport the fresh snow. Especially above the tree line sometimes easily released wind slabs will form. The fresh snow and wind slabs will be deposited on a weakly bonded old snowpack in particular on shady slopes. Faceted weak layers exist in the old snowpack especially here.

### Tendency

Hardly any decrease in avalanche danger. The wind will be strong over a wide area.



## Danger Level 2 - Moderate



**Tendency: Constant avalanche danger** →  
on Thursday 30 01 2020



Wind-drifted  
snow



Treeline

### Fresh wind slabs are to be evaluated with care and prudence.

As a consequence of fresh snow and strong wind the wind slabs will increase in size additionally. Mostly avalanches are only small but in many cases easily released. At high altitudes and in high Alpine regions avalanche prone locations are a little more prevalent. Adjacent to ridgelines avalanches can be triggered in deep layers of the snowpack and reach medium size in some cases. Restraint should be exercised because avalanches can sweep people along and give rise to falls. In steep terrain there is a danger of falling on the hard snow surface.

### Snowpack

#### Danger patterns

dp 6: cold, loose snow and wind

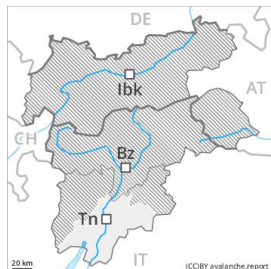
Over a wide area 5 to 10 cm of snow. has fallen since yesterday above approximately 1000 m. The strong wind will transport the fresh snow significantly. Especially above the tree line sometimes easily released wind slabs will form. The fresh snow and wind slabs will be deposited on a weakly bonded old snowpack in particular on shady slopes. Faceted weak layers exist in the old snowpack especially here.

### Tendency

The wind will be strong over a wide area. Wind slabs require caution.



## Danger Level 1 - Low



**Tendency: Constant avalanche danger** →  
on Thursday 30 01 2020



Wind-drifted  
snow



Treeline

### Fresh wind slabs are to be evaluated with care and prudence.

As a consequence of fresh snow and strong wind the wind slabs will increase in size additionally. Mostly avalanches are only small but in many cases easily released. At high altitudes and in high Alpine regions avalanche prone locations are a little more prevalent. Adjacent to ridgelines avalanches can be triggered in deep layers of the snowpack and reach medium size in some cases. Restraint should be exercised because avalanches can sweep people along and give rise to falls. In steep terrain there is a danger of falling on the hard snow surface.

### Snowpack

#### Danger patterns

dp 6: cold, loose snow and wind

Over a wide area 2 to 5 cm of snow. has fallen since yesterday above approximately 1000 m. The strong wind will transport only a little snow. In particular adjacent to ridgelines and in pass areas mostly small wind slabs will form. The fresh snow and wind slabs will be deposited on a weakly bonded old snowpack in particular on shady slopes. Faceted weak layers exist in the old snowpack especially here.

### Tendency

The wind will be strong over a wide area. Wind slabs require caution. The conditions are mostly favourable for snow sport activities outside marked and open pistes.