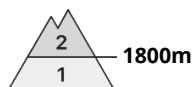
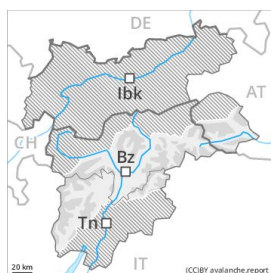






## Danger Level 2 - Moderate



**Tendency: Constant avalanche danger** →  
on Friday 07 02 2020



Wind-drifted  
snow



### Fresh wind slabs.

The mostly shallow wind slabs of the last two days can be released easily, or in isolated cases naturally. The avalanche prone locations are to be found in particular adjacent to ridgelines and in gullies and bowls in all aspects. They will increase with altitude. In the regions neighbouring those that are subject to danger level 3 (considerable) the avalanche danger is higher.

### Snowpack

#### Danger patterns

dp 6: cold, loose snow and wind

In some localities up to 10 cm of snow fell. This applies in particular in the regions neighbouring those that are subject to danger level 3 (considerable). The sometimes storm force wind has transported the fresh and old snow significantly. In particular adjacent to ridgelines and in gullies and bowls brittle wind slabs formed. This applies in particular above approximately 1800 m.

### Tendency

The danger of dry slab avalanches will decrease gradually.



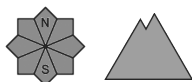
## Danger Level 1 - Low



**Tendency: Constant avalanche danger** →  
on Friday 07 02 2020



Wind-drifted  
snow



The sometimes strong wind will transport only a little snow.

Fresh and somewhat older wind slabs are mostly rather small and can be released by large loads in particular. At high altitudes and in high Alpine regions avalanche prone locations are a little more prevalent. The early morning will see favourable conditions generally. In steep terrain there is a danger of falling on the icy crust.

### Snowpack

The snowpack will be in most cases well bonded. Adjacent to ridgelines and in gullies and bowls mostly small wind slabs formed. Avalanche prone weak layers exist in the old snowpack in particular on very steep grassy slopes.

### Tendency

At transitions from a shallow to a deep snowpack and on wind-loaded slopes the avalanche situation is rather unfavourable.