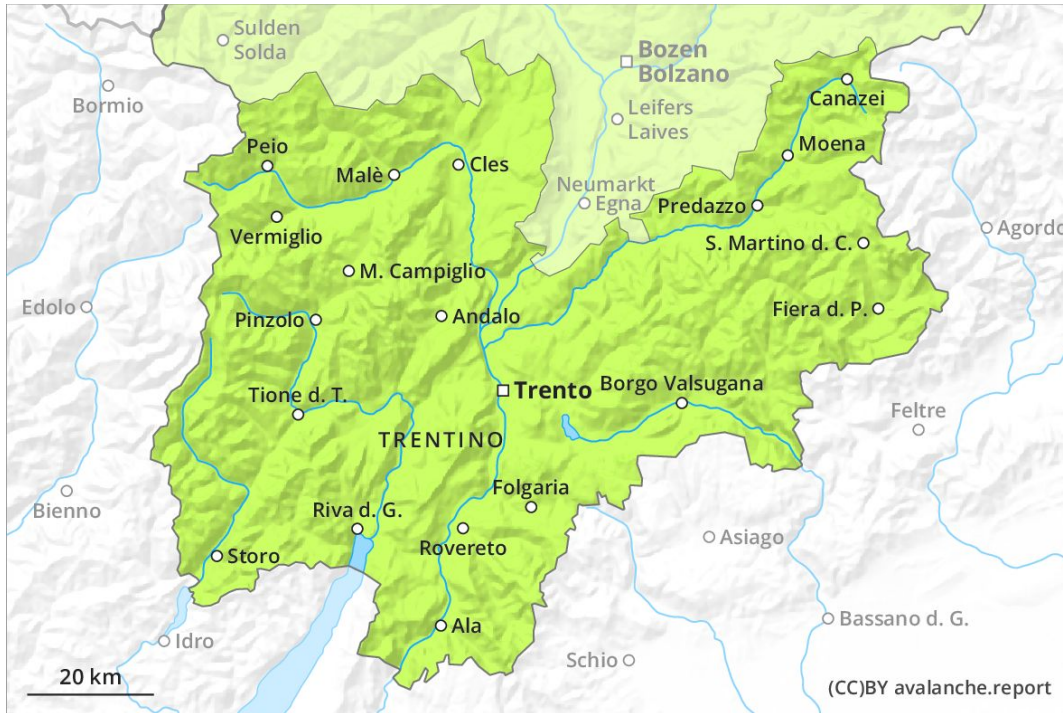
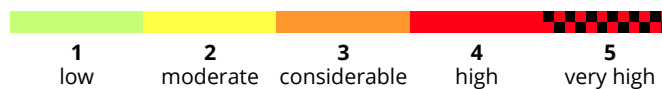
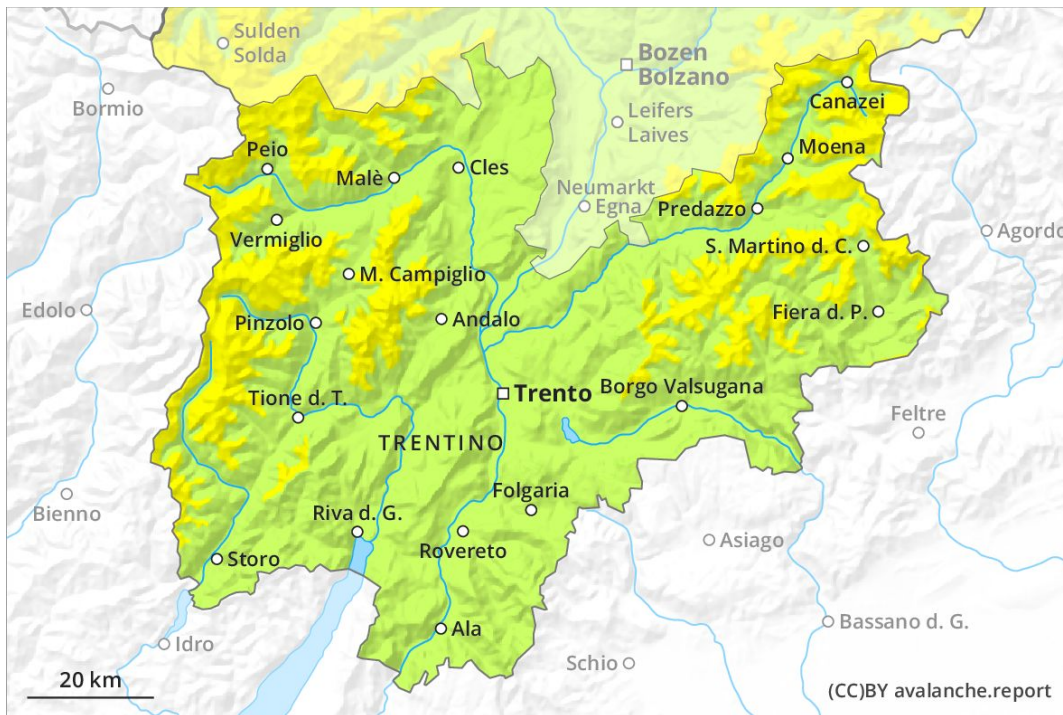




AM



PM



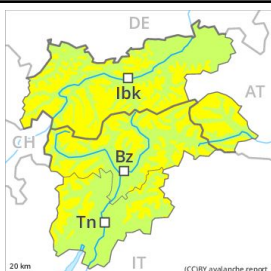
Danger Level 2 - Moderate

AM:



Tendency: Constant avalanche danger →
 on Friday 24 04 2020

PM:



Tendency: Constant avalanche danger →
 on Friday 24 04 2020



Wet snow



The avalanche danger after a clear night will be low (level 1).

The Avalanche Warning Service currently has only a small amount of information that has been collected in the field. Wet avalanches during the day are the main danger. As a consequence of warming during the day and the solar radiation, the likelihood of wet avalanches being released will increase gradually. The avalanche prone locations are to be found in particular on steep west to north to east facing slopes above approximately 2400 m. In some places wet avalanches can release the saturated snowpack and can reach as far as areas without any snow cover. In the runout zone hardly any snow is lying.

Snowpack

Danger patterns

dp 10: springtime scenario

Outgoing longwave radiation during the night will be good in some case. The surface of the snowpack will freeze to form a strong crust and will soften during the day. Individual weak layers exist deep in the old snowpack on steep shady slopes, especially above approximately 2800 m in areas where the snow cover is rather shallow. At low altitude no snow is lying.

Tendency

Increase in danger of wet avalanches as a consequence of warming during the day and solar radiation.