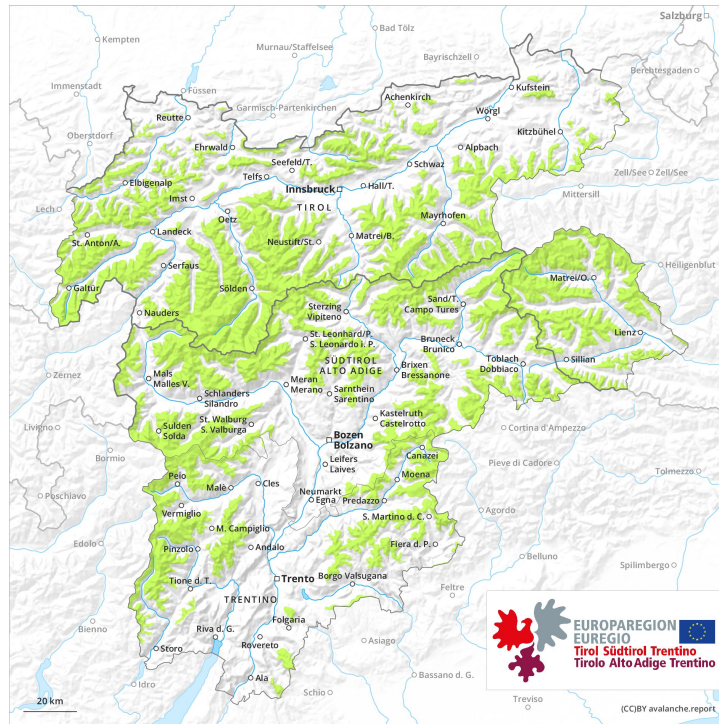
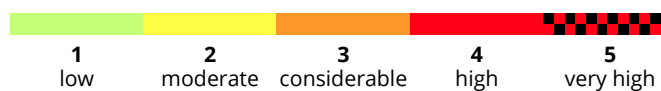
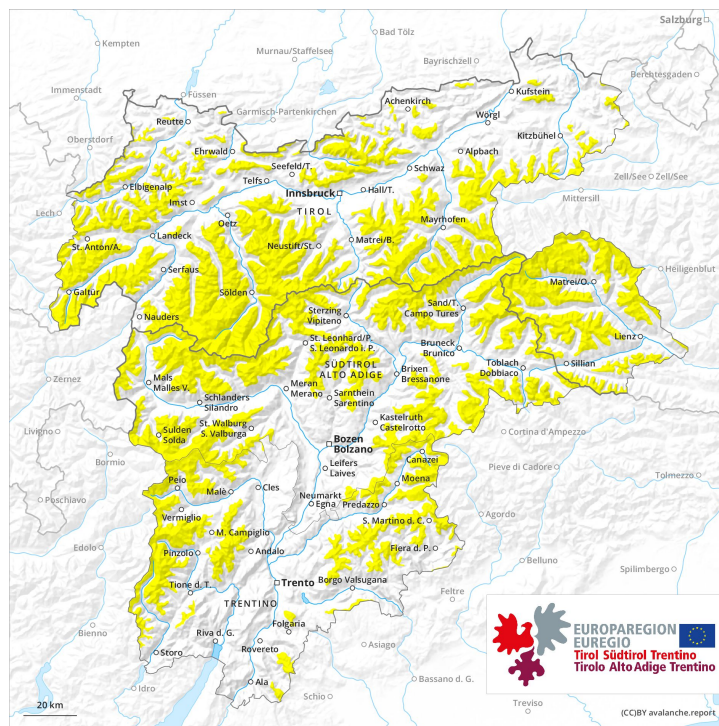




**AM**



**PM**



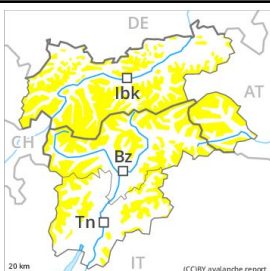
## Danger Level 2 - Moderate

**AM:**



**Tendency: Constant avalanche danger** →  
 on Monday 27 04 2020

**PM:**



**Tendency: Constant avalanche danger** →  
 on Monday 27 04 2020



Wet snow



The avalanche danger will increase quickly during the day.

The Avalanche Warning Service currently has only a small amount of information that has been collected in the field. Wet avalanches during the day are the main danger. As a consequence of warming during the day and the solar radiation, the likelihood of wet avalanches being released will increase gradually in all regions above approximately 2400 m. In localities where the night was overcast the danger will increase more quickly. The avalanche prone locations are to be found in particular on steep west to north to east facing slopes above approximately 2400 m. In some places wet avalanches can release the saturated snowpack and can reach as far as areas without any snow cover. The runout zones of avalanches are to be treated with caution as well. Transportation routes situated at higher altitudes in particular are endangered in some cases especially in the regions with a lot of snow.

## Snowpack

**Danger patterns**

dp 10: springtime scenario

Outgoing longwave radiation during the night will be good in some case. The surface of the snowpack will freeze to form a strong crust and will already soften in the late morning. From midday the weather will be partly cloudy over a wide area. In some localities precipitation. The weather will be very mild. Individual weak layers exist deep in the old snowpack on steep shady slopes, especially above approximately 2800 m in areas where the snow cover is rather shallow. At low altitude no snow is lying.

## Tendency

Gradual increase in danger of wet avalanches from early morning.