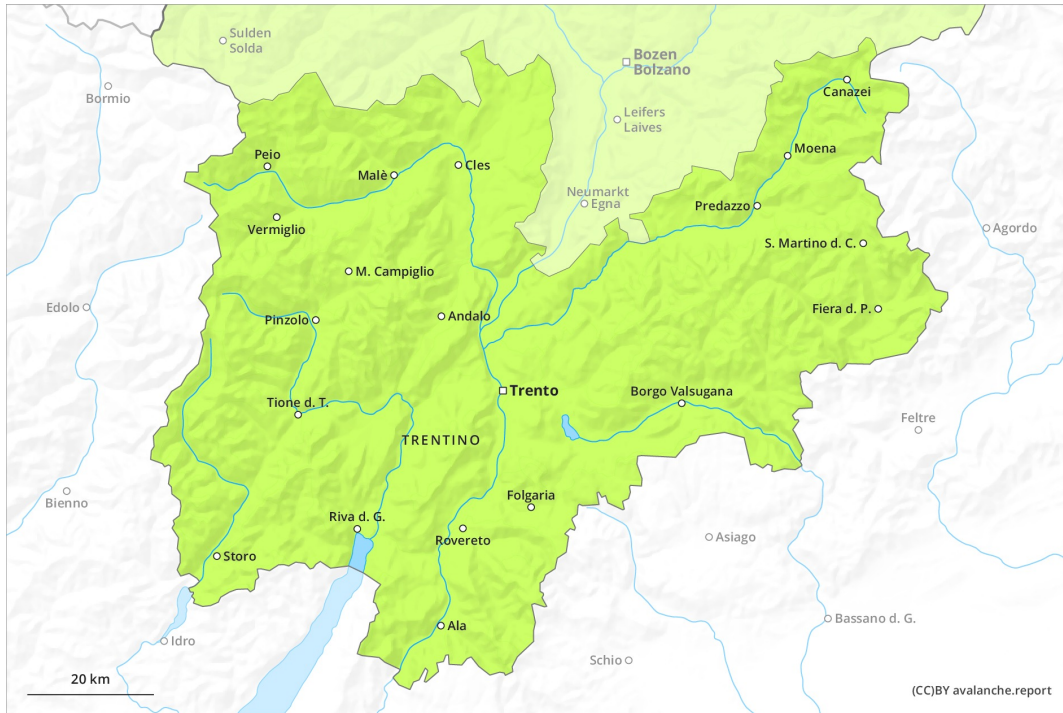
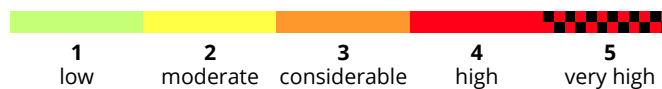
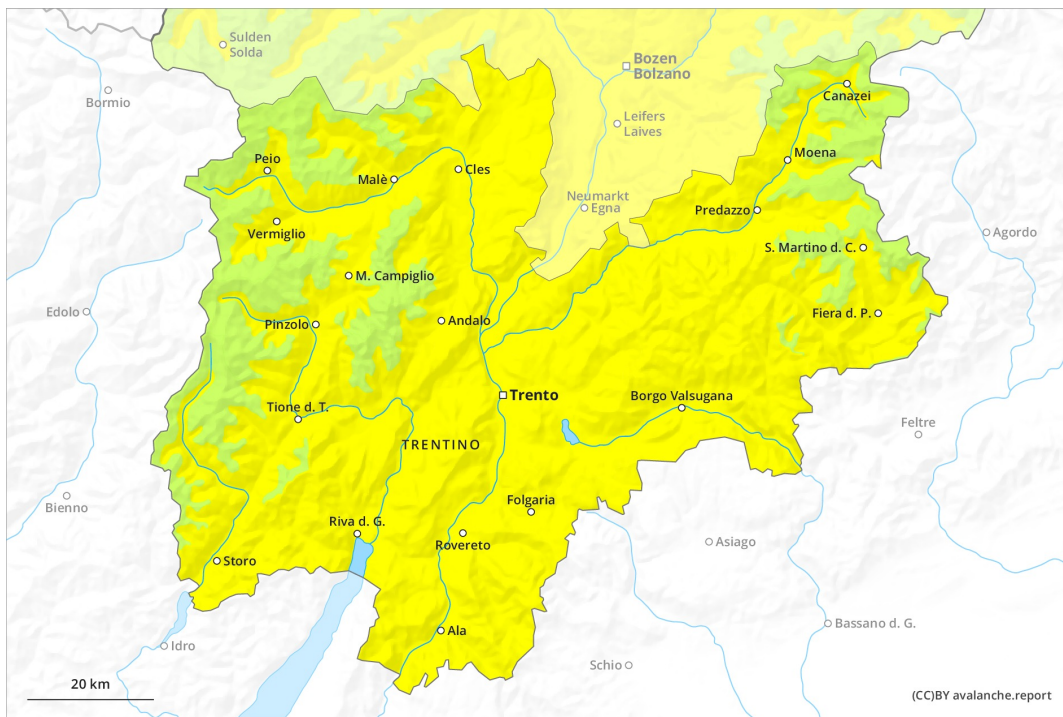




# AM



# PM

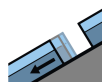


## Danger Level 2 - Moderate

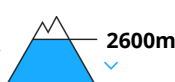
**AM:**



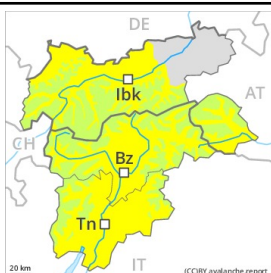
**Tendency: Constant avalanche danger** →  
 on Thursday 04 03 2021



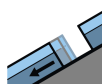
Gliding snow



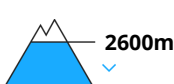
**PM:**



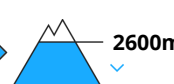
**Tendency: Constant avalanche danger** →  
 on Thursday 04 03 2021



Gliding snow



Wet snow



Currently there are generally favourable conditions. Gliding snow requires caution.

A clear night will be followed by generally favourable conditions. Slight increase in avalanche danger as a consequence of warming during the day and solar radiation.

Gliding avalanches are possible in particular in the second half of the day in isolated cases. These can reach dangerously large size, especially on the Main Alpine Ridge and to the south. Caution is to be exercised in particular on steep grassy slopes, especially in sunny starting zones that have retained the snow thus far. Gliding avalanches can also be released in the morning on rare occasions. Areas with glide cracks are to be avoided.

Moist avalanches can in isolated cases be released. This applies in particular in case of a large load, especially in the afternoon. Caution is to be exercised in particular on steep sunny slopes below approximately 2600 m.

Dry avalanches can additionally in very isolated cases be released in deeper layers, in particular on extremely steep shady slopes above approximately 2300 m at transitions from a shallow to a deep snowpack.

## Snowpack

**Danger patterns**

dp.2: gliding snow

dp.10: springtime scenario

Outgoing longwave radiation during the night will be good. The surface of the snowpack has frozen to form a strong crust and will hardly soften at all. In steep terrain there is a danger of falling on the hard snow surface.

The snowpack will be moist. This applies on steep sunny slopes below approximately 2600 m.

Isolated avalanche prone weak layers exist in the old snowpack, in particular on steep sunny slopes below approximately 2600 m, also on shady slopes above approximately 2300 m in areas where the snow cover is



rather shallow. At low and intermediate altitudes hardly any snow is lying, in particular in the north.

## Tendency

A clear night will be followed by favourable conditions. Wet and gliding avalanches require caution.