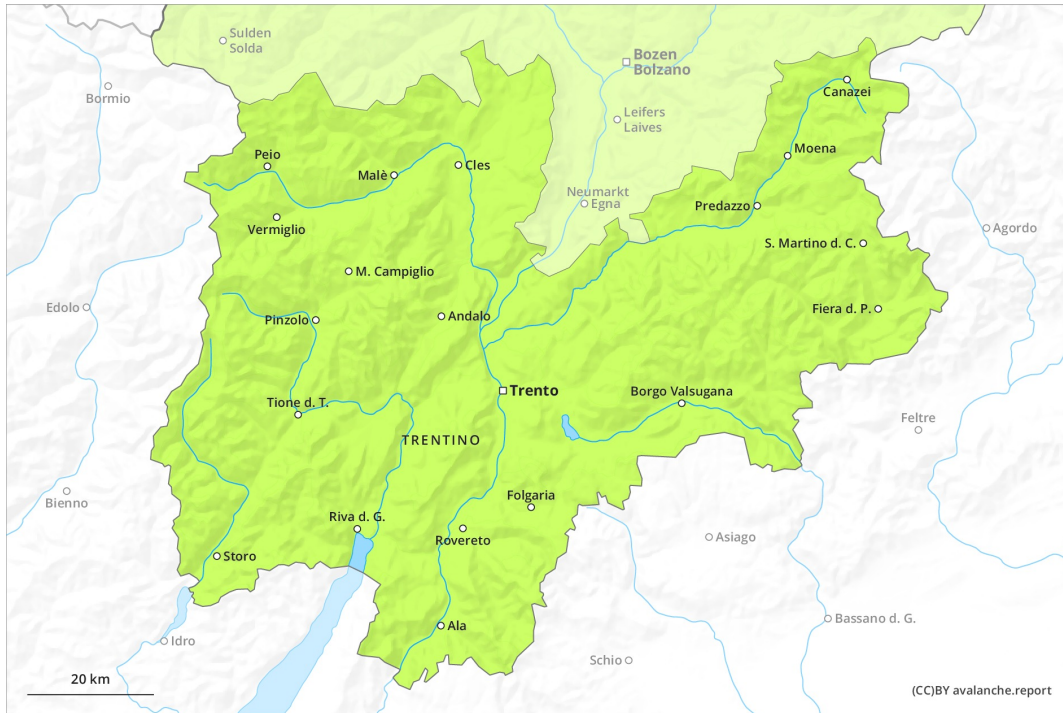
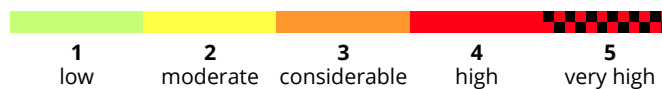
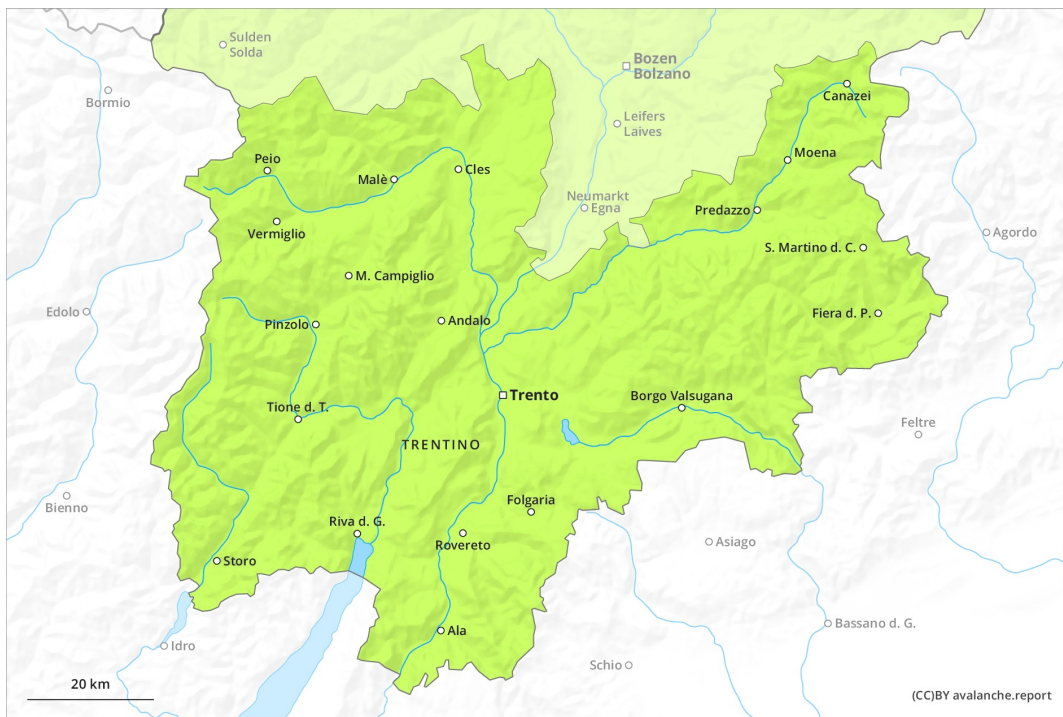




# AM



# PM



## Danger Level 1 - Low

**AM:**



**Tendency: Constant avalanche danger** →  
on Monday 08 03 2021

**PM:**



**Tendency: Constant avalanche danger** →  
on Monday 08 03 2021

Currently there are generally favourable conditions.

Caution is to be exercised in particular on steep grassy slopes, in particular in starting zones that have retained the snow thus far. Areas with glide cracks are to be avoided.

Moist avalanches can in isolated cases be released. This applies in particular in case of a large load, especially in the afternoon. Caution is to be exercised in particular on steep slopes below approximately 2400 m.

Dry avalanches can additionally in very isolated cases be released in deeper layers, in particular on extremely steep shady slopes above approximately 2300 m at transitions from a shallow to a deep snowpack. The small wind slabs of Friday can be released by a single winter sport participant in isolated cases.

### Snowpack

Outgoing longwave radiation during the night will be quite good. The surface of the snowpack has frozen to form a strong crust and will hardly soften at all. In steep terrain there is a danger of falling on the hard snow surface.

The snowpack will be moist, in particular on sunny slopes below approximately 2400 m.

Isolated avalanche prone weak layers exist in the old snowpack, in particular on steep slopes below approximately 2400 m, also on shady slopes above approximately 2300 m in areas where the snow cover is rather shallow. At low and intermediate altitudes hardly any snow is lying.

### Tendency

Currently there are favourable conditions.