





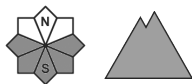
Danger Level 1 - Low



Tendency: Constant avalanche danger →
on Wednesday 10 03 2021



Wet snow



Currently there are quite favourable conditions.

The backcountry touring conditions are mostly favourable. Individual avalanche prone locations are to be found especially in extremely steep terrain at high altitude and on very steep sunny slopes, in isolated cases also on very steep grassy slopes, especially in case of releases originating from starting zones that have retained the snow thus far. Areas with glide cracks are to be avoided. Avalanches can in isolated cases be released, mostly by large additional loads, especially in the afternoon.

Snowpack

Outgoing longwave radiation during the night will be quite good. The surface of the snowpack will freeze to form a strong crust and will soften during the day. In steep terrain there is a danger of falling on the hard snow surface.

Isolated avalanche prone weak layers exist in the old snowpack, in particular on steep slopes above approximately 2400 m on shady slopes. At low and intermediate altitudes hardly any snow is lying.

Tendency

Currently there are favourable conditions.