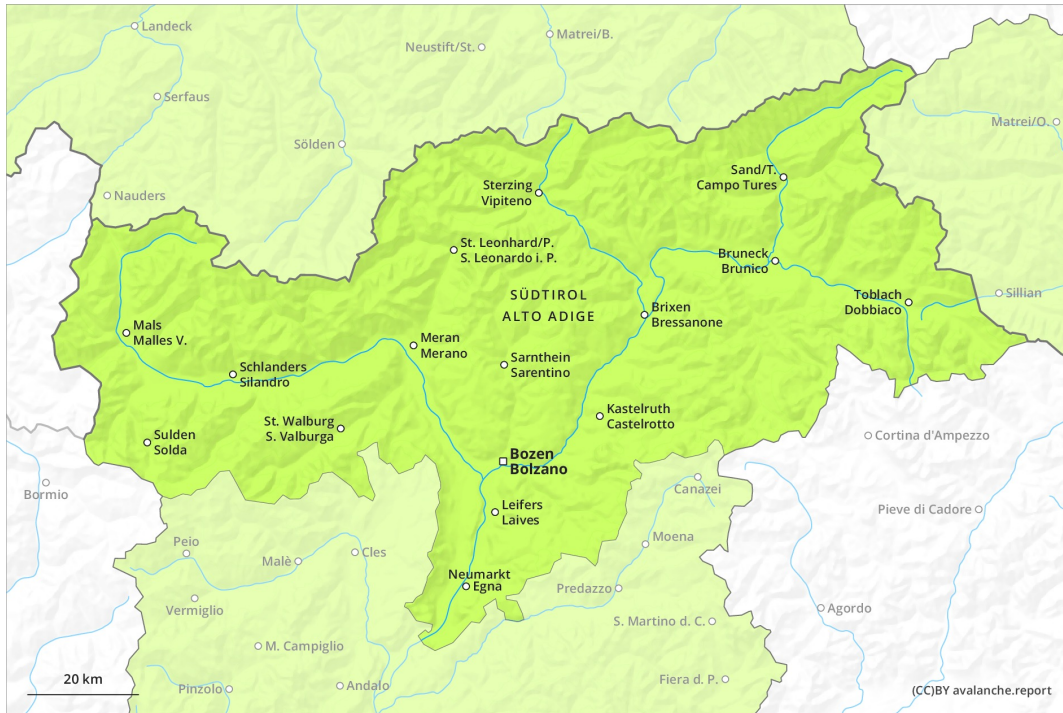
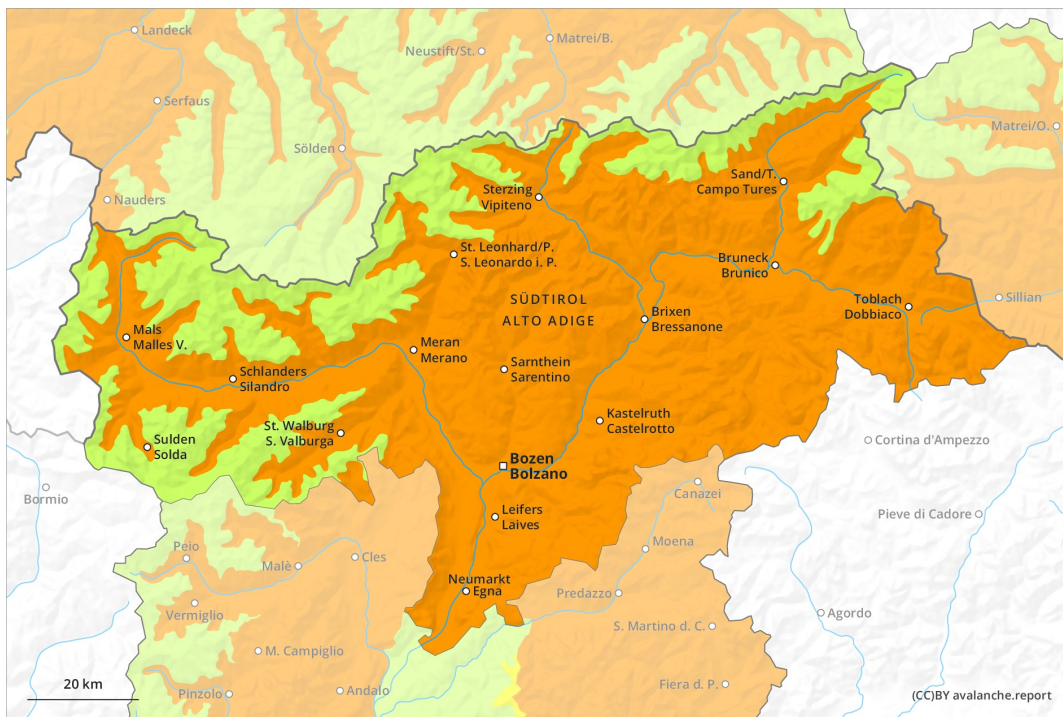




AM



PM



Danger Level 3 - Considerable

AM:



Tendency: Constant avalanche danger →
 on Wednesday 31 03 2021

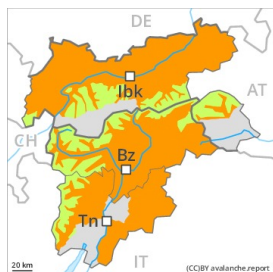


Persistent weak layer



2000m

PM:

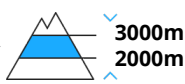


3000m

Tendency: Constant avalanche danger →
 on Wednesday 31 03 2021



Persistent weak layer

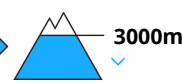


3000m

2000m



Wet snow



3000m



Persistent weak layer



2000m

Significant increase in avalanche danger as a consequence of warming during the day and solar radiation. Weakly bonded old snow requires caution.

Individual avalanche prone locations for dry avalanches are to be found in particular on very steep northwest, north and northeast facing slopes above approximately 2000 m. Caution is to be exercised in particular in extremely steep terrain, as well as on little-used, rather lightly snow-covered slopes, also adjacent to ridgelines. Apart from the danger of being buried, restraint should be exercised in view of the danger of avalanches sweeping people along and giving rise to falls. Backcountry touring calls for a certain restraint.

Afternoon: As a consequence of warming during the day and solar radiation there will be an increase in the danger of wet and gliding avalanches. The avalanche prone locations are to be found on very steep sunny slopes below approximately 3000 m. Wet avalanches can be released in near-surface layers by a single winter sport participant. In addition in the afternoon on east, south and west facing slopes, individual natural wet avalanches are possible. Mostly the avalanches are medium-sized. Backcountry tours and off-piste skiing should be concluded timely.

Snowpack

Danger patterns

dp.7: snow-poor zones in snow-rich surrounding

dp.10: springtime scenario



Outgoing longwave radiation during the night will be reduced. On steep sunny slopes the snowpack will soften quicker than the day before.

Somewhat older wind slabs are lying on weak layers. This applies on little-used, rather lightly snow-covered shady slopes above approximately 2000 m, also on very steep east and west facing slopes above approximately 2200 m, as well as on extremely steep south facing slopes above approximately 2600 m. The wind slabs are bonding only slowly with the old snowpack. Field observations and released avalanches confirm this situation.

Tendency

Significant increase in avalanche danger as a consequence of warming during the day and solar radiation.
Weakly bonded old snow requires caution.