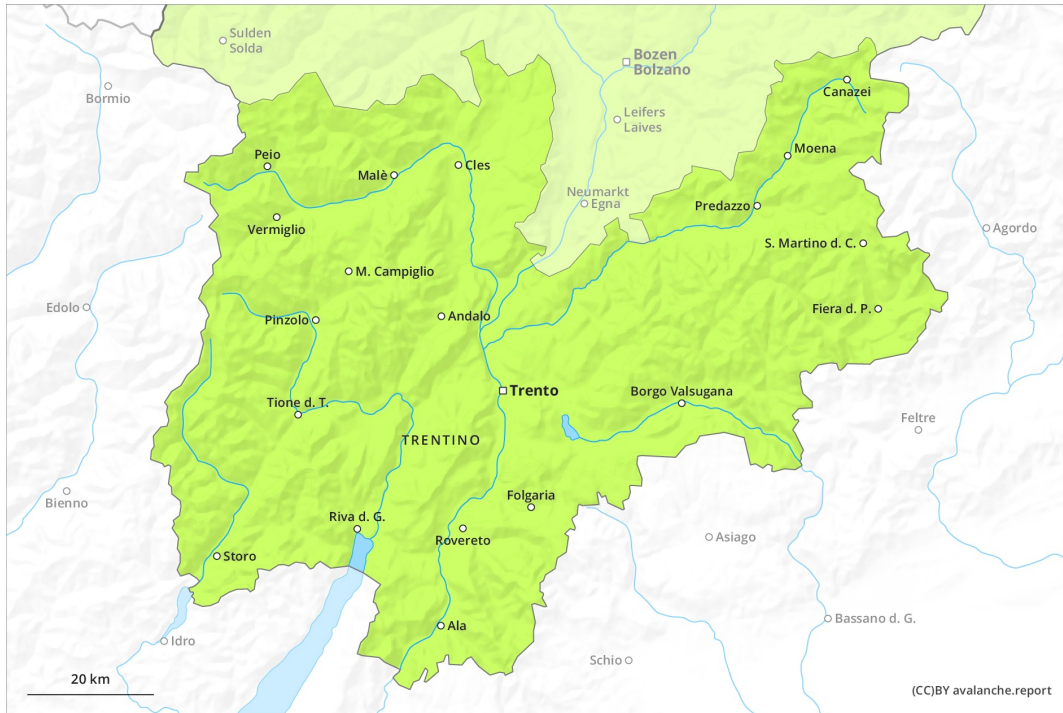
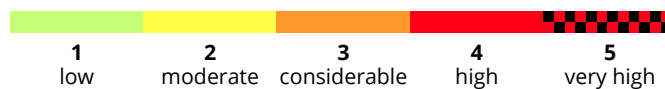
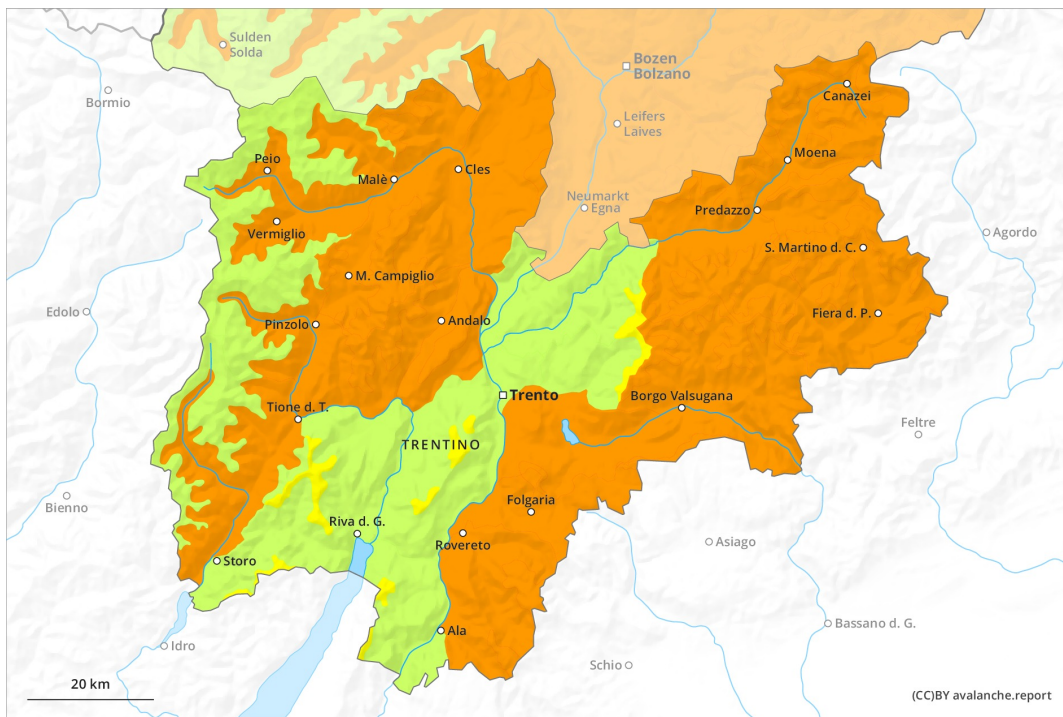




# AM



# PM



## Danger Level 3 - Considerable

**AM:**



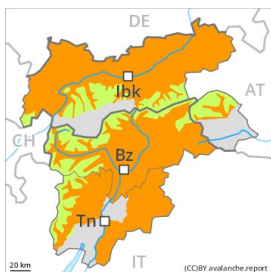
**Tendency: Constant avalanche danger** →  
 on Wednesday 31 03 2021



Persistent weak layer



**PM:**



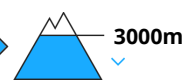
**Tendency: Constant avalanche danger** →  
 on Wednesday 31 03 2021



Persistent weak layer



Wet snow



Persistent weak layer



Significant increase in avalanche danger as a consequence of warming during the day and solar radiation. Weakly bonded old snow requires caution.

Individual avalanche prone locations for dry avalanches are to be found in particular on very steep northwest, north and northeast facing slopes above approximately 2000 m. Caution is to be exercised in particular in extremely steep terrain, as well as on little-used, rather lightly snow-covered slopes, also adjacent to ridgelines. Apart from the danger of being buried, restraint should be exercised in view of the danger of avalanches sweeping people along and giving rise to falls. Backcountry touring calls for a certain restraint.

Afternoon: As a consequence of warming during the day and solar radiation there will be an increase in the danger of wet and gliding avalanches. The avalanche prone locations are to be found on very steep sunny slopes below approximately 3000 m. Wet avalanches can be released in near-surface layers by a single winter sport participant. In addition in the afternoon on east, south and west facing slopes, individual natural wet avalanches are possible. Mostly the avalanches are medium-sized. Backcountry tours and off-piste skiing should be concluded timely.

## Snowpack

**Danger patterns**

dp.7: snow-poor zones in snow-rich surrounding

dp.10: springtime scenario



Outgoing longwave radiation during the night will be reduced. On steep sunny slopes the snowpack will soften quicker than the day before.

Somewhat older wind slabs are lying on weak layers. This applies on little-used, rather lightly snow-covered shady slopes above approximately 2000 m, also on very steep east and west facing slopes above approximately 2200 m, as well as on extremely steep south facing slopes above approximately 2600 m. The wind slabs are bonding only slowly with the old snowpack. Field observations and released avalanches confirm this situation.

## Tendency

Significant increase in avalanche danger as a consequence of warming during the day and solar radiation.  
Weakly bonded old snow requires caution.

## Danger Level 2 - Moderate

**AM:**



**Tendency: Increasing avalanche danger**  
 on Wednesday 31 03 2021

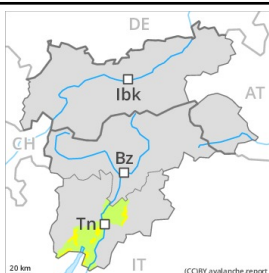


Wet snow



Treeline

**PM:**



Treeline

**Tendency: Increasing avalanche danger**  
 on Wednesday 31 03 2021



Wet snow



Treeline

A mostly favourable avalanche situation will prevail. Gradual increase in avalanche danger as a consequence of warming during the day and solar radiation.

In particular in gullies and bowls and behind abrupt changes in the terrain mostly small wind slabs formed. These can be released, especially by large additional loads, in particular on steep shady slopes. Mostly avalanches are small. The avalanche prone locations are clearly recognisable to the trained eye. The prevalence of such avalanche prone locations will increase with altitude.

As a consequence of warming during the day and solar radiation there will be a gradual increase in the danger of moist avalanches. This applies in particular on very steep grassy slopes at intermediate altitudes.

### Snowpack

**Danger patterns**

dp.10: springtime scenario

Outgoing longwave radiation during the night will be reduced over a wide area. In steep terrain there is a danger of falling on the hard snow surface. The old snowpack will be stable over a wide area.

On sunny slopes no snow is lying.

### Tendency

A clear night will be followed by favourable avalanche conditions, but the danger of wet and gliding avalanches will increase later.