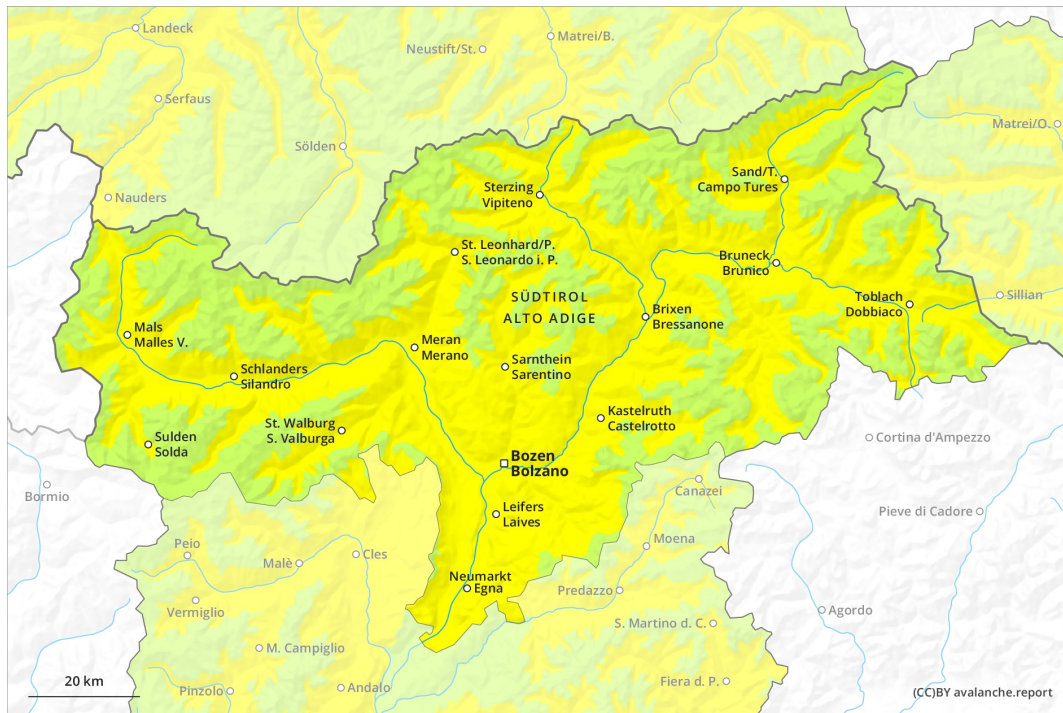
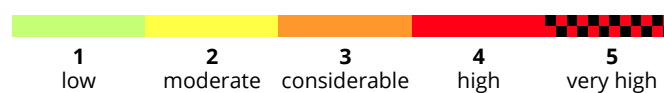
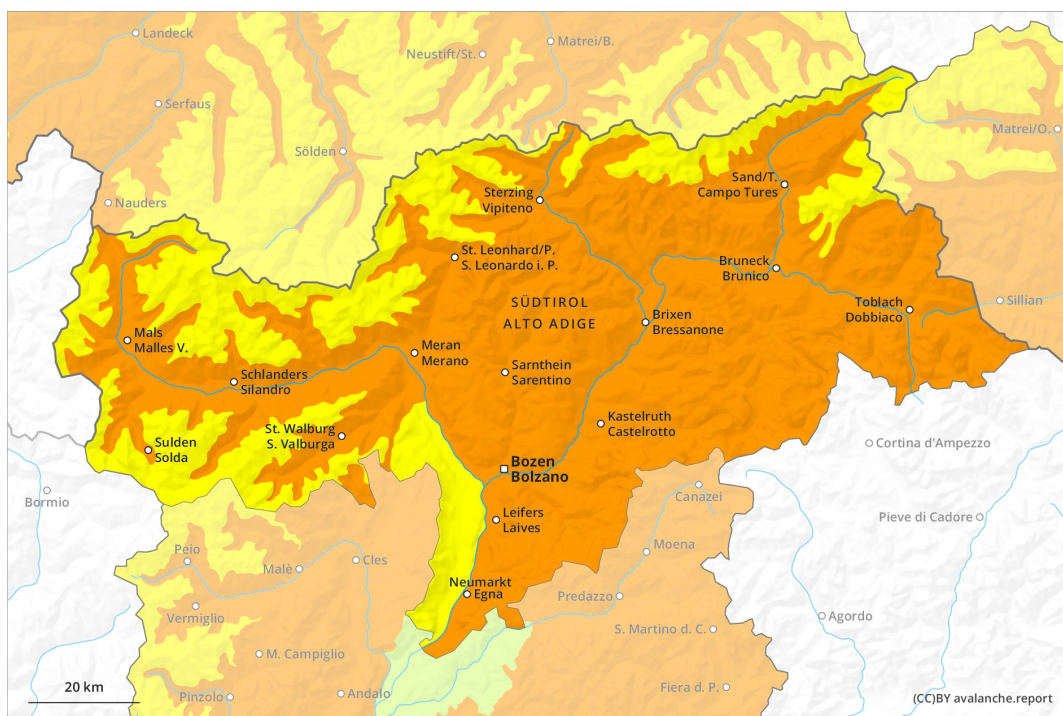


AM

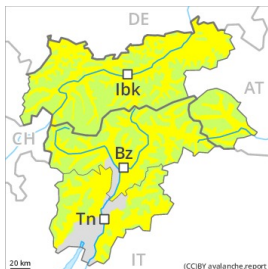


PM



Danger Level 3 - Considerable

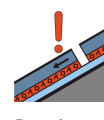
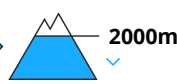
AM:



Tendency: Constant avalanche danger →
on Thursday 01 04 2021



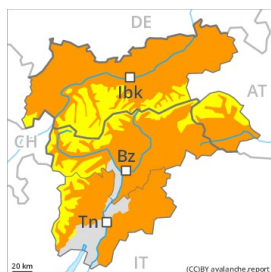
Wet snow



Persistent weak layer



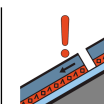
PM:



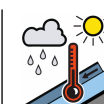
Tendency: Constant avalanche danger →
on Thursday 01 04 2021



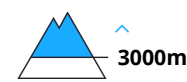
Wet snow



Persistent weak layer



Wet snow



In the early morning a generally favourable avalanche situation will prevail. Significant increase in avalanche danger as a consequence of warming during the day and solar radiation.

Early morning: Weakly bonded old snow represents the main danger. Individual avalanche prone locations for dry avalanches are to be found in particular on northwest, north and northeast facing slopes. Caution is to be exercised in particular in extremely steep terrain, as well as on little-used, rather lightly snow-covered slopes, also adjacent to ridgelines. These avalanche prone locations are rather rare. In isolated cases the avalanches are quite large.

From the late morning as a consequence of warming during the day and solar radiation there will be a significant increase in the danger of wet and gliding avalanches. On sunny slopes more frequent medium-sized and, in isolated cases, large natural wet avalanches are to be expected in all altitude zones. Moist and wet avalanches can additionally be released in near-surface layers by a single winter sport participant.

Areas with glide cracks are to be avoided. Backcountry tours and off-piste skiing should be concluded timely.

Snowpack

Danger patterns

dp.10: springtime scenario

dp.7: snow-poor zones in snow-rich surrounding



Outgoing longwave radiation during the night will be quite good. In steep terrain there is a danger of falling on the hard snow surface. On sunny slopes the snowpack will soften in the morning already.

Older wind slabs are lying on soft layers, especially on little used slopes above the tree line, as well as adjacent to ridgelines at high altitudes and in high Alpine regions.

Tendency

A clear night will be followed by favourable avalanche conditions at elevated altitudes. The avalanche danger will increase significantly during the day.



Danger Level 2 - Moderate

AM:



Tendency: Constant avalanche danger
on Thursday 01 04 2021



Wet snow



Treeline

PM:



Tendency: Constant avalanche danger
on Thursday 01 04 2021



Wet snow



A mostly favourable avalanche situation will prevail. Gradual increase in avalanche danger as a consequence of warming during the day and solar radiation.

Mostly avalanches are small. The avalanche prone locations are clearly recognisable to the trained eye. The prevalence of such avalanche prone locations will increase with altitude.

As a consequence of warming during the day and solar radiation there will be a gradual increase in the danger of moist avalanches. This applies in particular on very steep grassy slopes at intermediate altitudes.

Snowpack

Danger patterns

dp.10: springtime scenario

Outgoing longwave radiation during the night will be quite good. The surface of the snowpack has frozen to form a strong crust only at high altitudes and will already soften in the late morning. In steep terrain there is a danger of falling on the hard snow surface.

On sunny slopes no snow is lying.

Tendency

A clear night will be followed by favourable avalanche conditions, but the danger of wet and gliding avalanches will increase later.