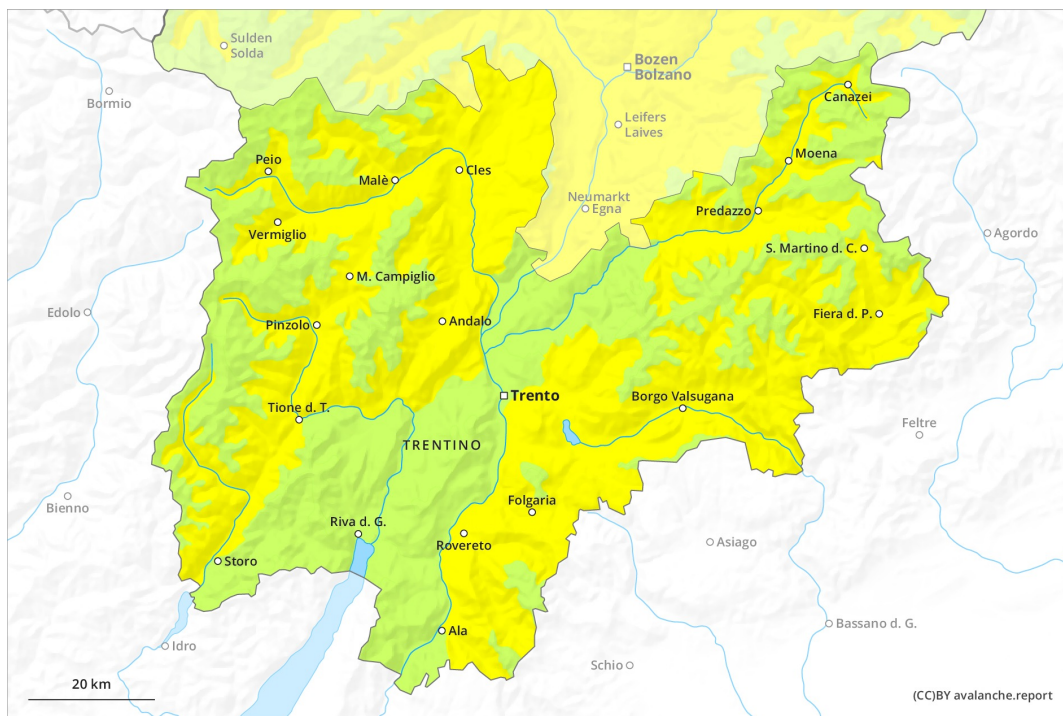
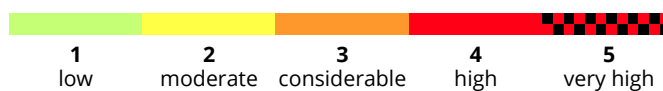
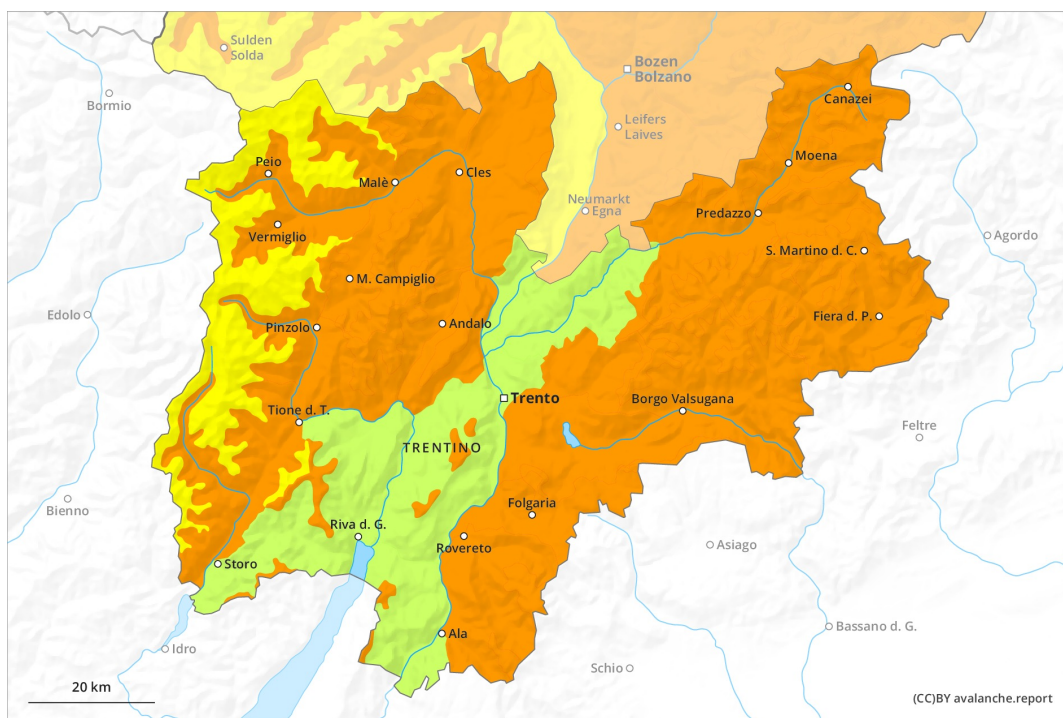


AM

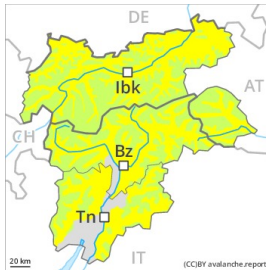


PM



Danger Level 3 - Considerable

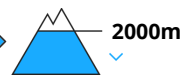
AM:



Tendency: Constant avalanche danger
on Thursday 01 04 2021



Wet snow



2000m

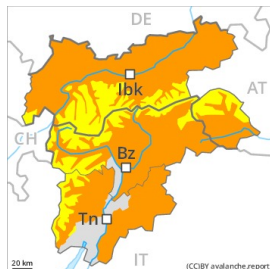


Persistent weak layer



Treeline

PM:



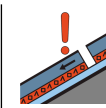
Tendency: Constant avalanche danger
on Thursday 01 04 2021



Wet snow



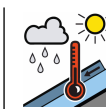
3000m



Persistent weak layer



Treeline



Wet snow



3000m

In the early morning a generally favourable avalanche situation will prevail. Significant increase in avalanche danger as a consequence of warming during the day and solar radiation.

Early morning: Weakly bonded old snow represents the main danger. Individual avalanche prone locations for dry avalanches are to be found in particular on northwest, north and northeast facing slopes. Caution is to be exercised in particular in extremely steep terrain, as well as on little-used, rather lightly snow-covered slopes, also adjacent to ridgelines. These avalanche prone locations are rather rare. In isolated cases the avalanches are quite large.

From the late morning as a consequence of warming during the day and solar radiation there will be a significant increase in the danger of wet and gliding avalanches. On sunny slopes more frequent medium-sized and, in isolated cases, large natural wet avalanches are to be expected in all altitude zones. Moist and wet avalanches can additionally be released in near-surface layers by a single winter sport participant.

Areas with glide cracks are to be avoided. Backcountry tours and off-piste skiing should be concluded timely.

Snowpack

Danger patterns

dp.10: springtime scenario

dp.7: snow-poor zones in snow-rich surrounding



Outgoing longwave radiation during the night will be quite good. In steep terrain there is a danger of falling on the hard snow surface. On sunny slopes the snowpack will soften in the morning already.

Older wind slabs are lying on soft layers, especially on little used slopes above the tree line, as well as adjacent to ridgelines at high altitudes and in high Alpine regions.

Tendency

A clear night will be followed by favourable avalanche conditions at elevated altitudes. The avalanche danger will increase significantly during the day.

Danger Level 3 - Considerable

AM:



Tendency: Increasing avalanche danger
on Thursday 01 04 2021

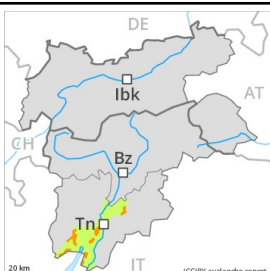


Wet snow



Treeline

PM:



Treeline

Tendency: Increasing avalanche danger
on Thursday 01 04 2021



Wet snow



Treeline

On shady slopes a favourable early-morning avalanche situation will persist in some regions. Further increase in danger of gliding avalanches and wet snow slides until the temperature drops.

In particular in gullies and bowls and behind abrupt changes in the terrain clearly visible wind slabs formed. The older wind slabs can be released easily. or in isolated cases naturally, in particular on steep sunny slopes. Mostly avalanches are medium-sized. The avalanche prone locations are numerous but are clearly recognisable to the trained eye. The prevalence of such avalanche prone locations will increase with altitude.

As the day progresses as a consequence of warming during the day and solar radiation there will be a gradual increase in the danger of gliding avalanches and wet snow slides. This applies in particular on grassy slopes at intermediate altitudes in all aspects.

Snowpack

Danger patterns

dp.10: springtime scenario

Outgoing longwave radiation during the night will be reduced over a wide area. In steep terrain there is a danger of falling on the hard snow surface. The old snowpack will be stable over a wide area. In southeast to south to south facing aspects no snow is lying.

Tendency

A clear night will be followed in the early morning by generally favourable avalanche conditions for a short time, but the danger of wet and gliding avalanches will increase later.