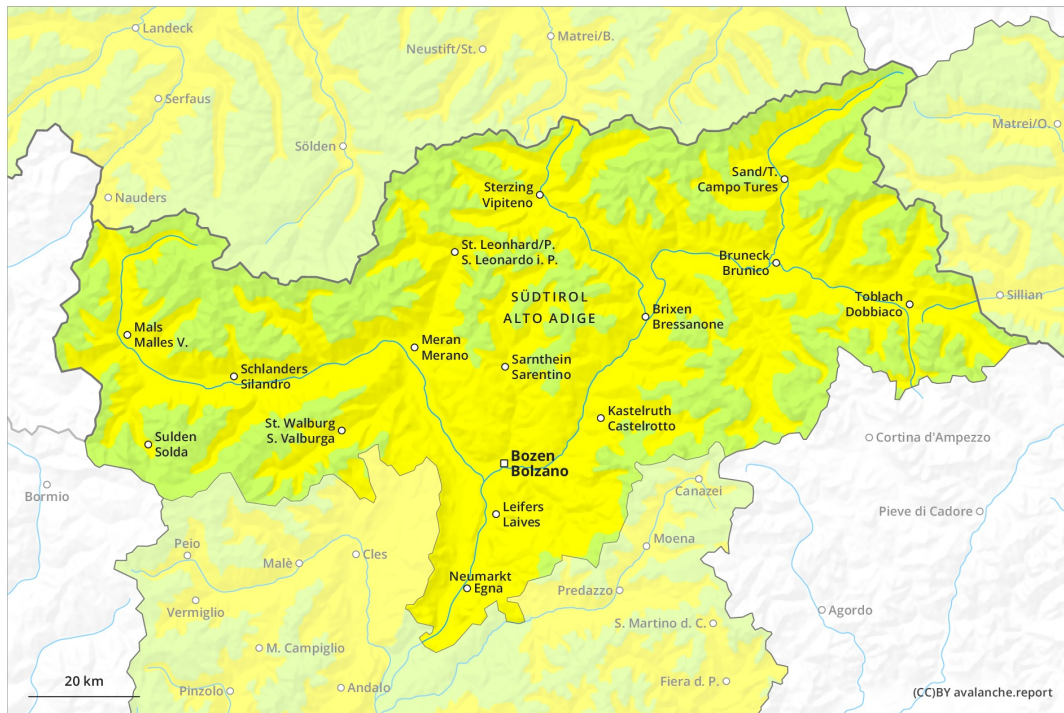
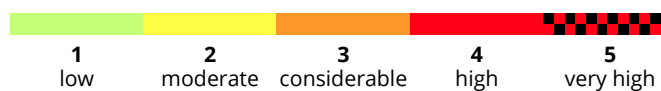
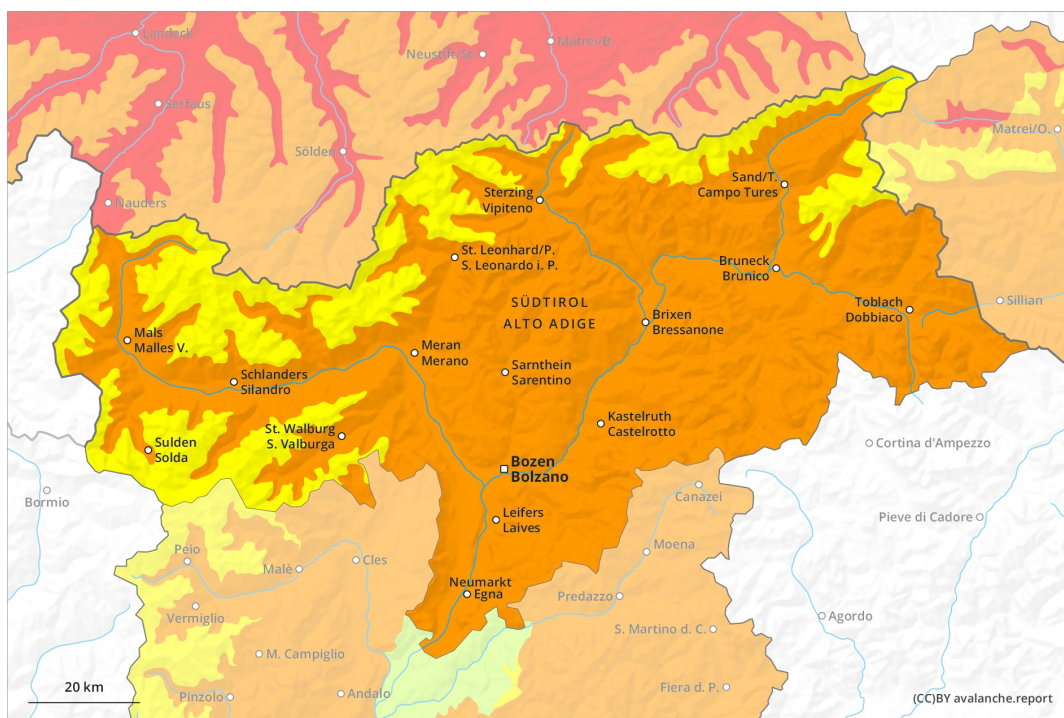




AM



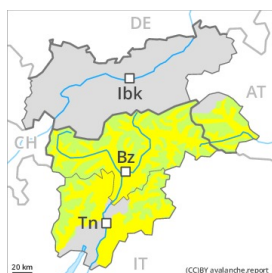
PM



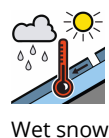


Danger Level 3 - Considerable

AM:



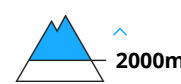
Tendency: Increasing avalanche danger
 on Friday 02 04 2021



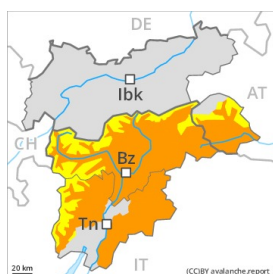
Wet snow



Persistent weak layer



PM:



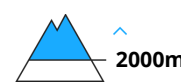
Tendency: Increasing avalanche danger
 on Friday 02 04 2021



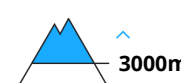
Wet snow



Persistent weak layer



Wet snow



In the early morning a generally favourable avalanche situation will prevail. Significant increase in avalanche danger as a consequence of warming during the day and solar radiation.

Early morning: Weakly bonded old snow represents the main danger. Individual avalanche prone locations for dry avalanches are to be found in particular on northwest, north and northeast facing slopes. Caution is to be exercised in particular in extremely steep terrain on little-used, rather lightly snow-covered slopes at high altitudes and in high Alpine regions, this also applies adjacent to ridgelines. These avalanche prone locations are rather rare. In isolated cases the avalanches are quite large.

From the late morning as a consequence of warming during the day and solar radiation there will be a rapid increase in the danger of wet and gliding avalanches. On sunny slopes more frequent medium-sized and large natural wet avalanches are to be expected in all altitude zones. Moist and wet avalanches can additionally be released in near-surface layers by a single winter sport participant.

Areas with glide cracks are to be avoided. Backcountry tours should be concluded timely.

Snowpack

Danger patterns

dp.10: springtime scenario

dp.7: snow-poor zones in snow-rich surrounding

Outgoing longwave radiation during the night will be quite good. In steep terrain there is a danger of falling



on the hard snow surface. This applies in particular at high altitudes and in high Alpine regions.

On sunny slopes the snowpack will soften in the morning already.

Older wind slabs are lying on soft layers, especially on little used slopes, as well as adjacent to ridgelines at high altitudes and in high Alpine regions.

Tendency

Increase in danger of wet and gliding avalanches as a consequence of the moist air. Especially in places where the night is overcast the danger will already exist in the morning.