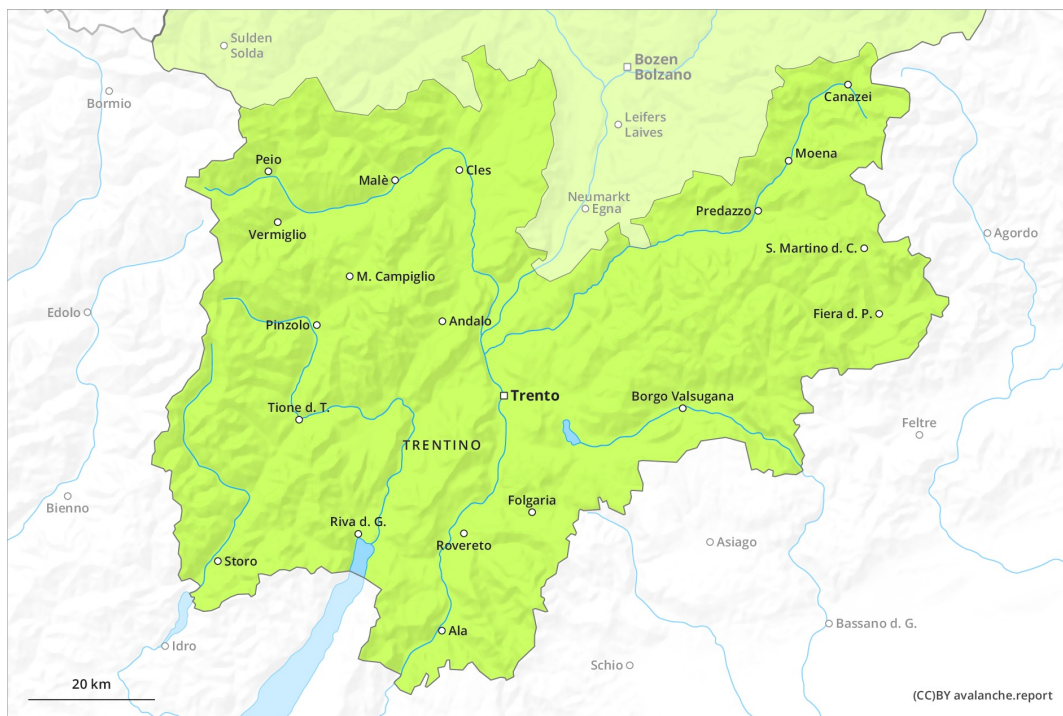
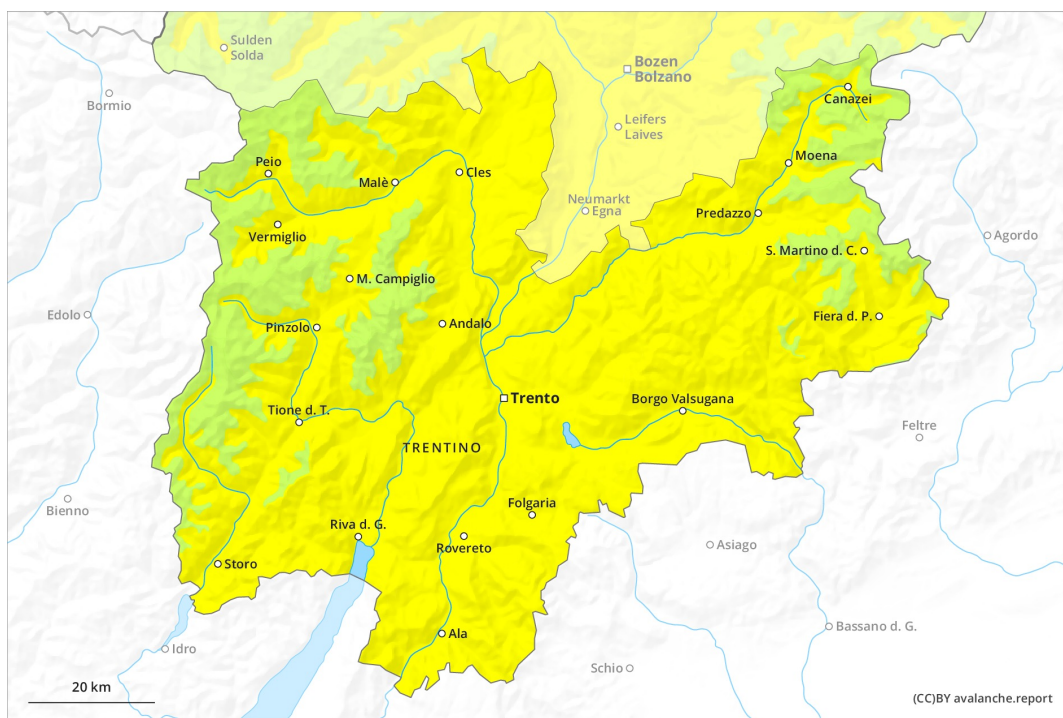




AM

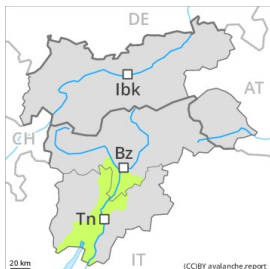


PM



Danger Level 2 - Moderate

AM:



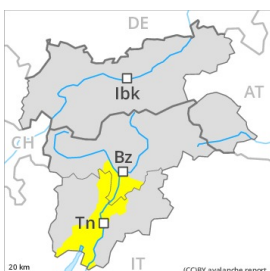
Tendency: Increasing avalanche danger
 on Tuesday 06 04 2021



Persistent weak layer



PM:



Tendency: Increasing avalanche danger
 on Tuesday 06 04 2021



Wet snow



Persistent weak layer



Increase in danger of wet avalanches in the course of the day.

A clear night will be followed in the early morning by favourable conditions over a wide area. Individual avalanche prone locations for dry avalanches are to be found on extremely steep shady slopes and at transitions from a shallow to a deep snowpack. In many places there is a danger of falling on the hard snow surface.

As the day progresses small and medium-sized wet avalanches are possible. Avalanche prone locations are to be found in particular on east, south and west facing slopes below approximately 2800 m and on north facing slopes below approximately 2200 m. Moist and wet avalanches can in isolated cases be released in near-surface layers by people.

Backcountry tours should be concluded timely.

Snowpack

Danger patterns

dp.10: springtime scenario

Outgoing longwave radiation during the night will be good over a wide area. The surface of the snowpack will freeze to form a strong crust and will soften during the day.

Individual weak layers exist in the snowpack at high altitude, especially on near-ridge shady slopes, as well as at transitions from a shallow to a deep snowpack.

On southeast, south and southwest facing slopes as well as at intermediate altitudes hardly any snow is lying.

Tendency

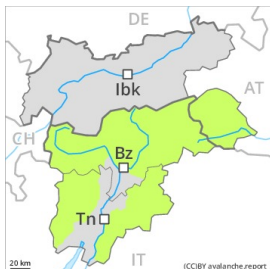
On Tuesday as a consequence of new snow and strong wind there will be an appreciable increase in the



danger of dry avalanches. The danger of wet avalanches will decrease.

Danger Level 2 - Moderate

AM:



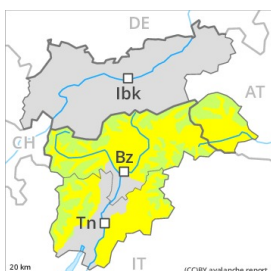
Tendency: Increasing avalanche danger
 on Tuesday 06 04 2021



Persistent weak layer



PM:



2800m

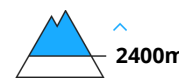
Tendency: Increasing avalanche danger
 on Tuesday 06 04 2021



Wet snow



Persistent weak layer



Increase in danger of wet avalanches in the course of the day.

A clear night will be followed in the early morning by favourable conditions over a wide area. Individual avalanche prone locations for dry avalanches are to be found on extremely steep shady slopes and at transitions from a shallow to a deep snowpack. In many places there is a danger of falling on the hard snow surface.

As the day progresses small and medium-sized wet avalanches are possible. Avalanche prone locations are to be found in particular on east, south and west facing slopes below approximately 2800 m and on north facing slopes below approximately 2200 m. Moist and wet avalanches can in isolated cases be released in near-surface layers by people.

Backcountry tours should be concluded timely.

Snowpack

Danger patterns

dp.10: springtime scenario

Outgoing longwave radiation during the night will be good over a wide area. The surface of the snowpack will freeze to form a strong crust and will soften during the day. Above approximately 2800 m the snowpack will soften only marginally.

Individual weak layers exist in the snowpack at high altitudes and in high Alpine regions, especially on near-ridge shady slopes, as well as at transitions from a shallow to a deep snowpack.

Tendency

On Tuesday as a consequence of new snow and strong wind there will be a significant increase in the danger of dry avalanches. The danger of wet avalanches will decrease.