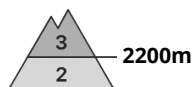
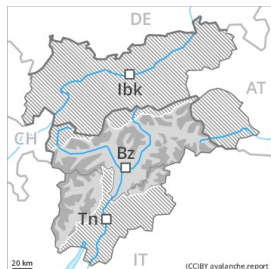




## Danger Level 3 - Considerable

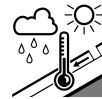
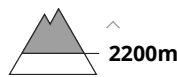


**Tendency: Constant avalanche danger** →

on Thursday 15 04 2021



Wind-drifted  
snow



Wet snow



### The new snow and wind slabs represent the main danger.

As a consequence of new snow and a strong wind from variable directions, sometimes large wind slabs formed. The avalanche prone locations are to be found in particular in west to north to east facing aspects and adjacent to ridgelines and in gullies and bowls above approximately 2200 m. In some cases avalanches are large and can be released by a single winter sport participant. The number and size of avalanche prone locations will increase with altitude. These avalanche prone locations are quite prevalent and are difficult to recognise. On very steep sunny slopes loose snow avalanches are possible as the day progresses. On cut slopes and on steep grassy slopes individual gliding avalanches and snow slides are possible. Backcountry touring calls for experience in the assessment of avalanche danger.

### Snowpack

#### Danger patterns

dp.6: cold, loose snow and wind

In particular in the Ortler Range and in Untertilliach 40 cm of snow, and even more in some localities, fell in the last three days. Wind slabs are lying on soft layers in all aspects, especially adjacent to ridgelines at high altitudes and in high Alpine regions.

Faceted weak layers exist in the snowpack in particular on very steep shady slopes.

### Tendency

Wind slabs are to be evaluated with care and prudence. Hardly any decrease in avalanche danger in particular on shady slopes.



## Danger Level 3 - Considerable



**Tendency: Decreasing avalanche danger**  
on Thursday 15 04 2021



New snow



Treeline



Wet snow



### The new snow and wind slabs represent the main danger.

As a consequence of new snow and a strong wind from northerly directions, sometimes large wind slabs formed in particular above the tree line. The avalanche prone locations are to be found in particular adjacent to ridgelines and in gullies and bowls in all aspects. Mostly avalanches are medium-sized but in many cases easily released. The number and size of avalanche prone locations will increase with altitude. As a consequence of solar radiation natural avalanches are possible as the day progresses, especially on extremely steep sunny slopes.

On cut slopes and on steep grassy slopes individual gliding avalanches and snow slides are possible. Backcountry touring calls for experience in the assessment of avalanche danger and careful route selection.

## Snowpack

### Danger patterns

dp.6: cold, loose snow and wind

15 to 30 cm of snow, and up to 40 cm in some localities, fell in the last three days above approximately 1600 m. Wind slabs are bonding only slowly with the old snowpack in all aspects, especially adjacent to ridgelines at high altitudes and in high Alpine regions.

The old snowpack will be in most cases well bonded. Faceted weak layers exist in the snowpack in particular on shady slopes. In particular on sunny slopes as well as below approximately 1300 m only a little snow is lying.

## Tendency

Wind slabs are to be evaluated with care and prudence. Gradual decrease in avalanche danger in particular on sunny slopes.



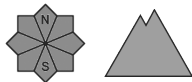
## Danger Level 2 - Moderate



**Tendency: Decreasing avalanche danger**  
on Thursday 15 04 2021



Wet snow



### The new snow and wind slabs represent the main danger.

As a consequence of new snow and a strong wind from northerly directions, mostly small wind slabs formed in particular above the tree line. The avalanche prone locations are to be found in particular adjacent to ridgelines and in gullies and bowls in all aspects. Mostly avalanches are medium-sized but in many cases easily released. The number and size of avalanche prone locations will increase with altitude. As a consequence of solar radiation natural avalanches are possible as the day progresses, especially on extremely steep sunny slopes.

On cut slopes and on steep grassy slopes individual gliding avalanches and snow slides are possible. Backcountry touring calls for experience in the assessment of avalanche danger and careful route selection.

## Snowpack

### Danger patterns

dp.6: cold, loose snow and wind

10 to 20 cm of snow, and even more in some localities, fell in the last three days above approximately 1600 m. Wind slabs are bonding only slowly with the old snowpack in all aspects, especially adjacent to ridgelines at high altitudes and in high Alpine regions.

The old snowpack will be in most cases well bonded. Faceted weak layers exist in the snowpack in particular on shady slopes. In particular on sunny slopes as well as below approximately 1500 m only a little snow is lying.

## Tendency

Wind slabs are to be evaluated with care and prudence. Hardly any decrease in avalanche danger in particular on shady slopes.