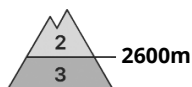
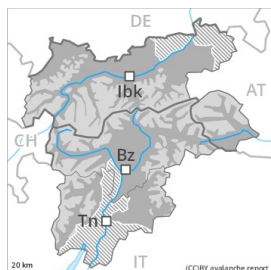




Danger Level 3 - Considerable



Tendency: Constant avalanche danger →
 on Sunday 02 05 2021



Wet snow



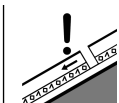
2600m



Wind-drifted
 snow



2600m



Persistent
 weak layer



2600m

Increase in danger of wet avalanches as a consequence of the rain. High Alpine regions: Fresh wind slabs require caution.

The danger of wet avalanches will already be elevated in the early morning.

During the day: Wet and gliding avalanches are to be expected as a consequence of the rain. Wet avalanches can be triggered in deep layers and reach quite a large size. This applies in particular on steep shady slopes. Additionally in some places wet avalanches can also be triggered in near-surface layers. This applies in all aspects below approximately 2600 m. Exposed parts of transportation routes can be endangered occasionally.

As a consequence of new snow and a sometimes strong southwesterly wind, sometimes easily released wind slabs will form in high Alpine regions. The avalanche prone locations are to be found in particular on extremely steep shady slopes. Caution is to be exercised adjacent to ridgelines, and in areas where the snow cover is rather shallow.

Backcountry touring calls for meticulous route selection.

Snowpack

Danger patterns

dp.3: rain

dp.6: cold, loose snow and wind

Outgoing longwave radiation during the night will be severely restricted over a wide area. The snowpack is wet and its surface has a melt-freeze crust that is barely capable of bearing a load, in particular below approximately 2600 m.

Evening and night: Over a wide area heavy rain to 2500 m. The rain will give rise to a loss of strength within the snowpack.

In some regions 15 to 30 cm of snow, and even more in some localities, will fall above approximately 2500 m. The moist fresh snow and the wind slabs formed by the moderate to strong southwesterly wind are lying on top of a weakly bonded old snowpack in particular on very steep shady slopes. This applies



especially above approximately 2600 m, and in areas where the snow cover is rather shallow.

At low and intermediate altitudes only a little snow is lying, especially on sunny slopes. At high altitudes and in high Alpine regions there is still a very large amount of snow.

Tendency

Slight decrease in danger of wet avalanches as a consequence of the ceasing of precipitation. Fresh wind slabs at high altitude.



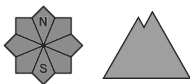
Danger Level 2 - Moderate



Tendency: Constant avalanche danger →
on Sunday 02 05 2021



Wet snow



In some localities increase in danger of wet avalanches as a consequence of the rain.

The weather conditions will give rise to increasing and thorough wetting of the snowpack. Already in the late morning small and medium-sized wet avalanches are possible. As the day progresses as a consequence of the rain there will be an additional increase in the danger of wet avalanches. Wet avalanches can in some places be released in near-surface layers by a single winter sport participant, also on shady slopes.

Snowpack

Danger patterns

dp.3: rain

dp.10: springtime scenario

Outgoing longwave radiation during the night will be barely evident. The surface of the snowpack will already be soft in the early morning. Over a wide area rain to 2500 m. The rain will give rise to a loss of strength within the snowpack.

At low and intermediate altitudes a little snow is lying.

Tendency

Outgoing longwave radiation during the night will be reduced. The danger of wet avalanches will persist.