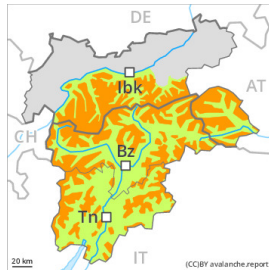




## Danger Level 3 - Considerable



**Tendency: Constant avalanche danger** →  
on Thursday 02 12 2021



Weak layers in the old snowpack necessitate caution. Wind slabs are to be evaluated critically.

Weak layers in the old snowpack can be released easily. Such avalanche prone locations are to be found in particular on shady slopes above the tree line. At elevated altitudes the avalanche prone locations are to be found in all aspects. The brittle wind slabs are prone to triggering in all aspects above the tree line.

Whumpfung sounds and the formation of shooting cracks when stepping on the snowpack serve as an alarm indicating the danger. Mostly avalanches are medium-sized.

Gliding avalanches can also occur.

Experience in the assessment of avalanche danger is required.

## Snowpack

### Danger patterns

dp.5: snowfall after a long period of cold

dp.6: cold, loose snow and wind

Some snow will fall until the early morning in particular in the north and in the northeast.

Faceted weak layers exist in the centre of the snowpack, in particular on shady slopes above the tree line, as well as on steep sunny slopes at elevated altitudes. The sometimes storm force wind will transport the new snow and, in some cases, old snow as well. The cold fresh snow and the wind slabs are bonding poorly with the old snowpack.

## Tendency

Some snow will fall in some regions. As a consequence of falling temperatures and the occasionally strong westerly wind, the snowpack can not consolidate.