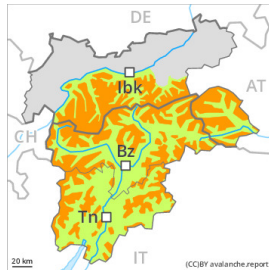




Danger Level 3 - Considerable



Tendency: Constant avalanche danger →
on Thursday 02 12 2021



Weak layers in the old snowpack necessitate caution. Wind slabs are to be evaluated critically.

Weak layers in the old snowpack can be released easily. Such avalanche prone locations are to be found in particular on shady slopes above the tree line. At elevated altitudes the avalanche prone locations are to be found in all aspects. The brittle wind slabs are prone to triggering in all aspects above the tree line.

Whumpfung sounds and the formation of shooting cracks when stepping on the snowpack serve as an alarm indicating the danger. Mostly avalanches are medium-sized.

Gliding avalanches can also occur.

Experience in the assessment of avalanche danger is required.

Snowpack

Danger patterns

dp.5: snowfall after a long period of cold

dp.6: cold, loose snow and wind

Some snow will fall until the early morning in particular in the north and in the northeast.

Faceted weak layers exist in the centre of the snowpack, in particular on shady slopes above the tree line, as well as on steep sunny slopes at elevated altitudes. The sometimes storm force wind will transport the new snow and, in some cases, old snow as well. The cold fresh snow and the wind slabs are bonding poorly with the old snowpack.

Tendency

Some snow will fall in some regions. As a consequence of falling temperatures and the occasionally strong westerly wind, the snowpack can not consolidate.



Danger Level 2 - Moderate



Tendency: Constant avalanche danger →

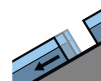
on Thursday 02 12 2021



Wind-drifted
snow



Treeline



Gliding snow



2400m

Wind slabs require caution.

A lot of snow fell in the last few days in some regions. Since Tuesday the wind has been storm force over a wide area. The wind has transported the fresh and old snow significantly. The wind slabs can be released easily, even by a single winter sport participant, in all aspects above the tree line. Avalanches can reach medium size. The somewhat older wind slabs are covered with new snow in some cases and therefore difficult to recognise.

As a consequence of warming more frequent gliding avalanches and snow slides are to be expected, but they will be mostly small. This applies in particular on steep grassy slopes below approximately 2400 m.

Snowpack

Danger patterns

dp.6: cold, loose snow and wind

dp.2: gliding snow

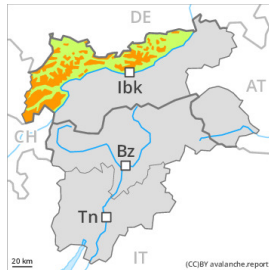
A lot of snow fell in the last few days in some regions. Since Tuesday the wind has been storm force over a wide area. The wind has transported the new snow significantly. In some cases the various wind slabs have bonded poorly together.

Tendency

Some snow will fall in some regions. As a consequence of falling temperatures and the occasionally strong westerly wind, the snowpack can not consolidate.



Danger Level 3 - Considerable



Tendency: Constant avalanche danger →

on Thursday 02 12 2021



Wind-drifted
snow



Treeline



Persistent
weak layer



Treeline

Wind slabs and weakly bonded old snow represent the main danger.

A lot of snow fell in the last few days in some regions. Since Tuesday the wind has been storm force over a wide area. The wind has transported the fresh and old snow significantly. The extensive wind slabs can be released easily, even by a single winter sport participant, in all aspects above the tree line. Avalanches can reach medium size. The somewhat older wind slabs are covered with new snow in some cases and therefore difficult to recognise. As a consequence of warming natural avalanches are possible, especially on wind-loaded slopes, and adjacent to ridgelines.

Weak layers in the old snowpack can be released by individual winter sport participants. Whumpfung sounds and the formation of shooting cracks when stepping on the snowpack serve as an alarm indicating the danger. Experience in the assessment of avalanche danger is required.

Gliding avalanches and snow slides are possible.

Snowpack

Danger patterns

dp.6: cold, loose snow and wind

dp.5: snowfall after a long period of cold

A lot of snow fell in the last few days in some regions. Since Tuesday the wind has been storm force over a wide area. The wind has transported the fresh and old snow significantly. In some cases the various wind slabs have bonded poorly with each other and the old snowpack.

Faceted weak layers exist in the centre of the snowpack, in particular on shady slopes above the tree line, as well as on steep sunny slopes at elevated altitudes.

Tendency

Some snow will fall in some regions. As a consequence of falling temperatures and the occasionally strong westerly wind, the snowpack can not consolidate.