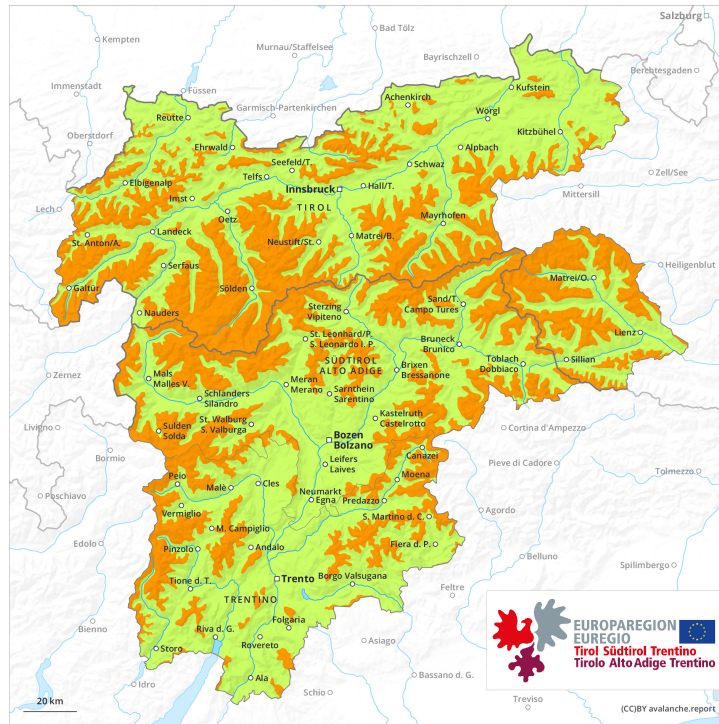
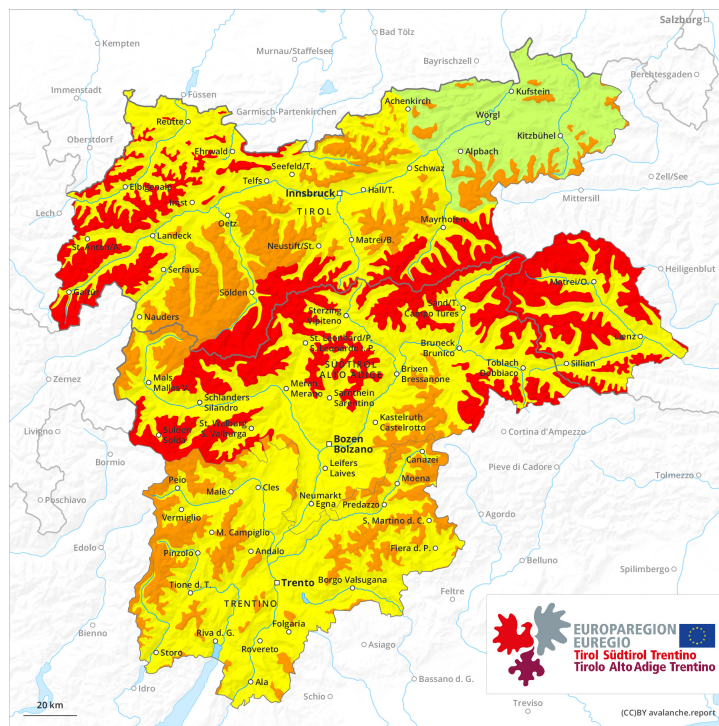




AM

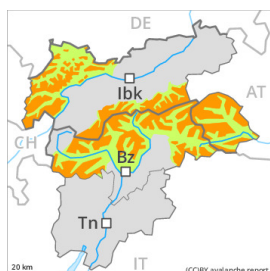
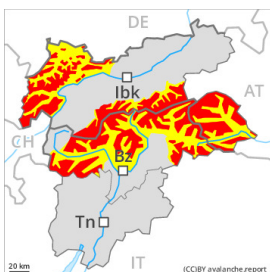
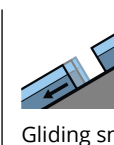


PM





Danger Level 4 - High

AM:**Tendency: Constant avalanche danger** →
on Thursday 09 12 2021**PM:****Tendency: Constant avalanche danger** →
on Thursday 09 12 2021

By the evening as a consequence of new snow and strong wind there will be an increase in the avalanche danger to level 4 (high). Outside marked and open pistes a precarious avalanche situation will prevail.

As a consequence of new snow and strong wind natural avalanches are to be expected from midday, even large ones in isolated cases. This applies in particular on steep shady slopes in areas close to the tree line, as well as above the tree line.

Dry avalanches can additionally be released in the weakly bonded old snow, even by a single winter sport participant, especially on steep shady slopes in areas close to the tree line, as well as above the tree line, also on steep sunny slopes at elevated altitudes. Remotely triggered avalanches are possible in isolated cases. In the regions exposed to heavier precipitation the avalanche prone locations are more prevalent and larger. They are currently prevalent immediately adjacent to the pistes as well. These avalanche prone locations are barely recognisable, even to the trained eye.

In all aspects the wind slabs will increase in size once again. These are to be assessed critically.

In addition in the regions exposed to heavier precipitation, gliding avalanches are to be expected, especially on steep grassy slopes below approximately 2200 m.

Extensive experience in the assessment of avalanche danger and great restraint are important.

Snowpack

Danger patterns

dp.5: snowfall after a long period of cold

dp.6: cold, loose snow and wind



Over a wide area 15 to 30 cm of snow, and even more in some localities, will fall on Wednesday in all altitude zones. The sometimes storm force wind will transport the fresh and old snow significantly. The fresh snow and the extensive wind slabs will be deposited on the unfavourable surface of an old snowpack in all aspects above the tree line. The fresh wind slabs are very prone to triggering in all aspects. Faceted weak layers exist in the centre of the snowpack, in particular on shady slopes in areas close to the tree line, as well as above the tree line, also on steep sunny slopes at elevated altitudes.

Whumpfung sounds and the formation of shooting cracks when stepping on the snowpack indicate the unfavourable bonding of the snowpack.

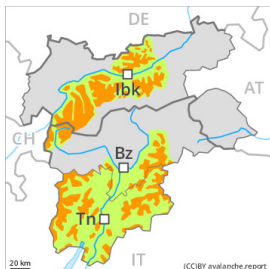
Tendency

As a consequence of low temperatures and the strong to storm force northerly wind, the snowpack can not consolidate. The snowpack remains prone to triggering, in particular at elevated altitudes, as well as on shady slopes.



Danger Level 3 - Considerable

AM:



Tendency: Constant avalanche danger on Thursday 09 12 2021 →



Persistent weak layer



Treeline

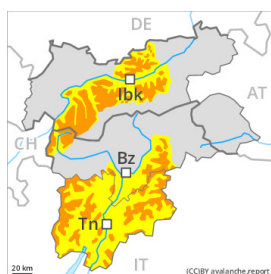


Wind-drifted snow



Treeline

PM:



Tendency: Constant avalanche danger on Thursday 09 12 2021 →



Wind-drifted snow



Treeline



Persistent weak layer



Treeline



Gliding snow



2200m

By the evening as a consequence of new snow and strong wind there will be an increase in the avalanche danger. Outside marked and open pistes a sometimes precarious avalanche situation will prevail.

As a consequence of new snow and strong wind natural avalanches are possible from midday. This applies in particular on steep shady slopes in areas close to the tree line, as well as above the tree line.

Dry avalanches can additionally be released in the weakly bonded old snow, even by a single winter sport participant, especially on steep shady slopes in areas close to the tree line, as well as above the tree line, also on steep sunny slopes at elevated altitudes. Remotely triggered avalanches are possible in isolated cases. In the regions exposed to heavier precipitation the avalanche prone locations are more prevalent and larger. They are currently prevalent immediately adjacent to the pistes as well. These avalanche prone locations are barely recognisable, even to the trained eye.

In all aspects the wind slabs will increase in size once again. They are to be assessed critically.

In addition in the regions exposed to heavier precipitation, gliding avalanches are to be expected, especially on steep grassy slopes below approximately 2200 m.

Extensive experience in the assessment of avalanche danger and great restraint are important.

Snowpack

Danger patterns

dp.5: snowfall after a long period of cold

dp.6: cold, loose snow and wind

Over a wide area 15 to 25 cm of snow, and even more in some localities, will fall on Wednesday in all



altitude zones. The sometimes storm force wind will transport the fresh and old snow significantly. The fresh snow and the extensive wind slabs will be deposited on the unfavourable surface of an old snowpack in all aspects above the tree line. The fresh wind slabs remain for the foreseeable future prone to triggering, especially at elevated altitudes. Faceted weak layers exist in the centre of the snowpack, in particular on shady slopes in areas close to the tree line, as well as above the tree line, also on steep sunny slopes at elevated altitudes.

Whumpfung sounds and the formation of shooting cracks when stepping on the snowpack indicate the unfavourable bonding of the snowpack.

Tendency

As a consequence of low temperatures and the strong to storm force northerly wind, the snowpack can not consolidate. The snowpack remains prone to triggering, in particular at elevated altitudes, as well as on shady slopes.



Danger Level 3 - Considerable



Tendency: Constant avalanche danger →
on Thursday 09 12 2021



Wind-drifted
snow



Treeline

Fresh wind slabs represent the main danger.

The fresh wind slabs are prone to triggering in all aspects above the tree line. These can be released even by a single winter sport participant. The avalanche prone locations are to be found in particular adjacent to ridgelines and in gullies and bowls. At elevated altitudes these avalanche prone locations will become more prevalent. In some cases the avalanches are medium-sized.

Dry avalanches can additionally in isolated cases be released in deeper layers. This applies in the south, especially on very steep shady slopes in areas close to the tree line, as well as above the tree line.

Experience in the assessment of avalanche danger is required.

Snowpack

Danger patterns

dp.6: cold, loose snow and wind

Over a wide area 5 to 15 cm of snow will fall on Wednesday in all altitude zones. The sometimes storm force wind will transport the fresh and old snow significantly. The fresh wind slabs are lying on soft layers at high altitudes and in high Alpine regions. These remain for the foreseeable future prone to triggering at elevated altitudes. Isolated avalanche prone weak layers exist in the centre of the snowpack on shady slopes. This applies in the south.

Tendency

Fresh wind slabs represent the main danger, in particular at elevated altitudes.