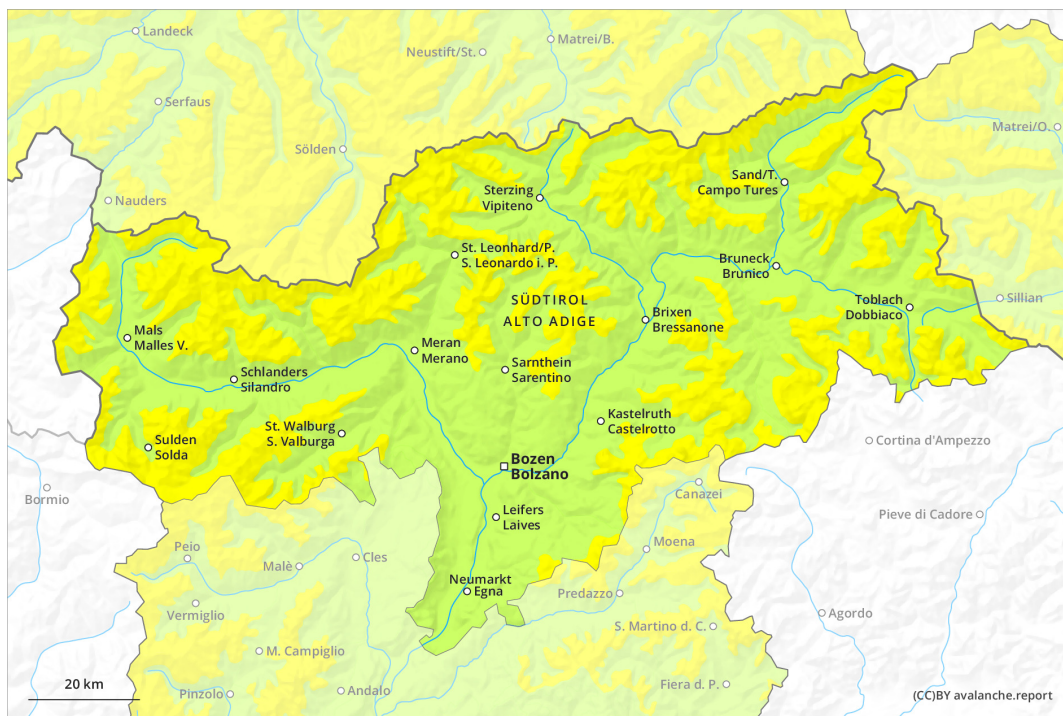
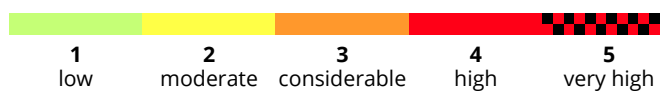
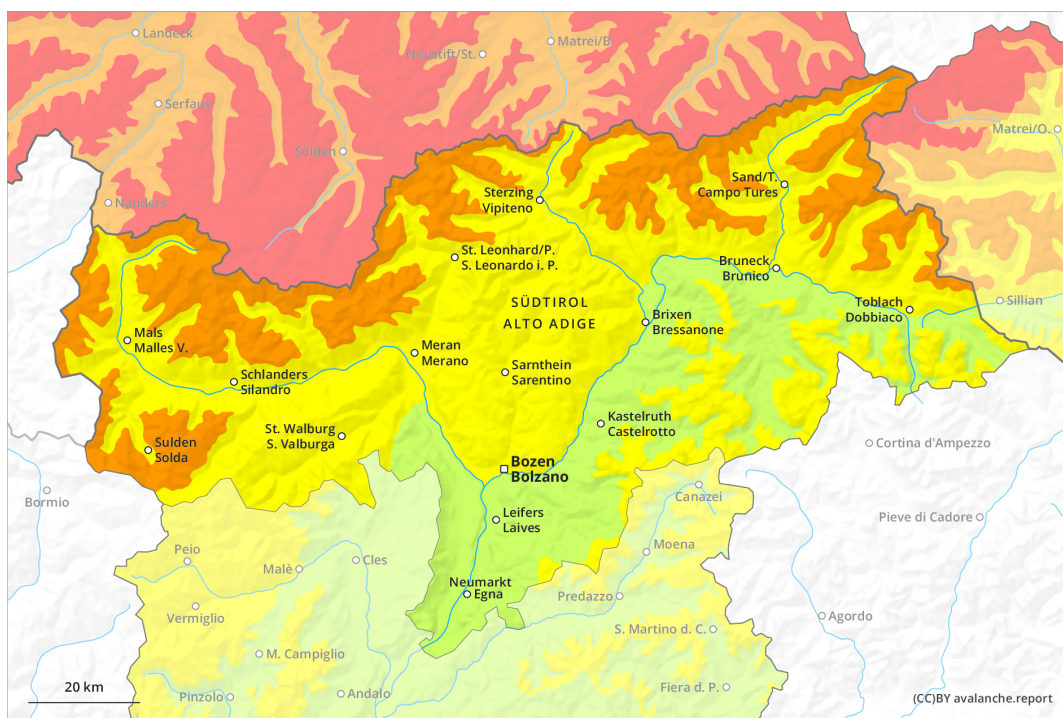




**AM**

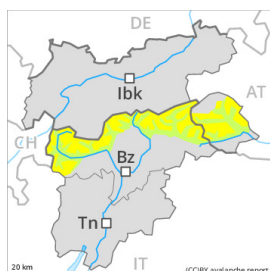
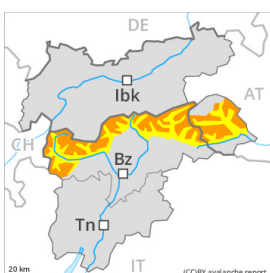


**PM**





## Danger Level 3 - Considerable

**AM:****Tendency: Constant avalanche danger** →  
on Thursday 30 12 2021Wind-drifted  
snow**PM:****Tendency: Constant avalanche danger** →  
on Thursday 30 12 2021Wind-drifted  
snow

Wet snow



Significant increase in danger of dry and wet avalanches as a consequence of the precipitation. Fresh wind slabs require caution. Wet and gliding avalanches below approximately 2400 m.

In the late morning a quite favourable avalanche situation will still be encountered.

Significant increase in avalanche danger as the precipitation becomes more intense. As a consequence of new snow and stormy weather the wind slabs will increase in size appreciably as the day progresses. Single winter sport participants can release avalanches easily, including large ones. The avalanche-prone wind slabs will be covered with new snow in some cases and therefore difficult to recognise. At elevated altitudes these avalanche prone locations are more prevalent and larger.

As the snowfall level rises wet and gliding avalanches are to be expected, in particular on west, north and east facing slopes below approximately 2400 m. Wet avalanches can in isolated cases release the saturated snowpack and reach quite a large size. The peak danger point is expected during the night probably. In the regions where rain falls the avalanche danger is greater.

## Snowpack

**Danger patterns**

dp.6: cold, loose snow and wind

dp.3: rain

As a consequence of snowfall above approximately 2400 m and the storm force westerly wind, fresh snow drift accumulations will form. In the regions neighbouring those that are subject to danger level 4 (high) 20 to 40 cm of snow will fall. In the other regions 15 to 30 cm of snow will fall. The fresh wind slabs are prone to triggering.

The rain will give rise in the afternoon to increasing and thorough wetting of the old snowpack over a wide area below approximately 2400 m. These weather conditions will cause a rapid weakening of the weak layers during the course of the night.

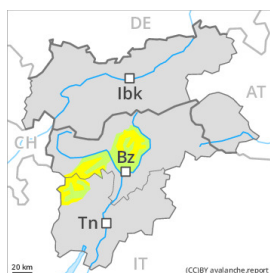


## Tendency

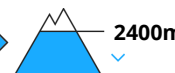
Up to 2200 m and above rain will fall on Thursday in the north and in the northeast, this applies in particular until the early morning. As a consequence of the ceasing of precipitation there will be a decrease in the danger of wet and gliding avalanches. As a consequence of solar radiation loose snow avalanches are to be expected. The danger of dry avalanches will persist.



## Danger Level 2 - Moderate

**AM:****Tendency: Constant avalanche danger** →  
on Thursday 30 12 2021Wind-drifted  
snow**PM:****Tendency: Constant avalanche danger** →  
on Thursday 30 12 2021Wind-drifted  
snow

Wet snow



In some regions increase in danger of dry and wet avalanches as a consequence of the precipitation. Fresh wind slabs require caution. Wet and gliding avalanches below approximately 2400 m.

In the late morning a quite favourable avalanche situation will still be encountered.

In the afternoon as a consequence of new snow and wind there will be a gradual increase in the avalanche danger. As a consequence of a strong to storm force wind from northwesterly directions, mostly small wind slabs will form at high altitudes and in high Alpine regions. Avalanches can be released, even by a single winter sport participant and reach medium size. The avalanche-prone wind slabs are to be avoided in particular in steep terrain. As a consequence of new snow and wind the prevalence and size of such avalanche prone locations will increase from midday.

As the snowfall level rises wet and gliding avalanches are to be expected during the course of the night, especially on west, north and east facing slopes below approximately 2400 m. Wet avalanches can in isolated cases release the saturated snowpack and reach medium size.

## Snowpack

**Danger patterns**

dp.6: cold, loose snow and wind

dp.3: rain

As a consequence of snowfall above approximately 2400 m and the storm force westerly wind, fresh snow drift accumulations will form. The sometimes storm force wind will transport the new snow and, in some cases, old snow as well. The new snow and wind slabs are in some cases prone to triggering.

The rain will give rise in the afternoon to increasing and thorough wetting of the snowpack over a wide area below approximately 2400 m. These weather conditions will cause a rapid weakening of the weak layers during the course of the night, in particular on west, north and east facing slopes. On sunny slopes below approximately 2200 m only a little snow is lying.

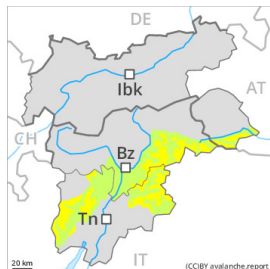
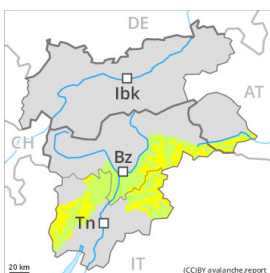


## Tendency

The danger of dry avalanches will persist. As a consequence of the strong wind the wind slabs will increase in size additionally on Thursday. As a consequence of warming more wet and gliding avalanches are possible.



## Danger Level 2 - Moderate

**AM:****Tendency: Constant avalanche danger** →  
on Thursday 30 12 2021Wind-drifted  
snow**PM:****Tendency: Constant avalanche danger** →  
on Thursday 30 12 2021Wind-drifted  
snow

Wet snow



### Fresh wind slabs require caution.

In the late morning a quite favourable avalanche situation will still be encountered.

In the afternoon as a consequence of new snow and wind there will be a gradual increase in the avalanche danger. As a consequence of a strong to storm force wind from northwesterly directions, mostly small wind slabs will form at high altitudes and in high Alpine regions. Avalanches can be released, even by a single winter sport participant and reach medium size. The avalanche-prone wind slabs are to be avoided in particular in steep terrain.

During the course of the night as a consequence of warming there will be only a slight increase in the danger of wet and gliding avalanches, especially on west, north and east facing slopes below approximately 2200 m.

### Snowpack

**Danger patterns**

dp.6: cold, loose snow and wind

dp.3: rain

Some new snow above approximately 2200 m. As a consequence of snowfall and the storm force westerly wind, fresh snow drift accumulations will form. The fresh wind slabs are in some cases prone to triggering. The rain will give rise in the afternoon to increasing softening of the snowpack below approximately 2200 m, in particular on west, north and east facing slopes. On sunny slopes below approximately 2200 m only a little snow is now lying.

### Tendency

The danger of dry avalanches will persist. As a consequence of the strong wind the wind slabs will increase in size additionally on Thursday. As a consequence of warming more wet and gliding avalanches are possible.