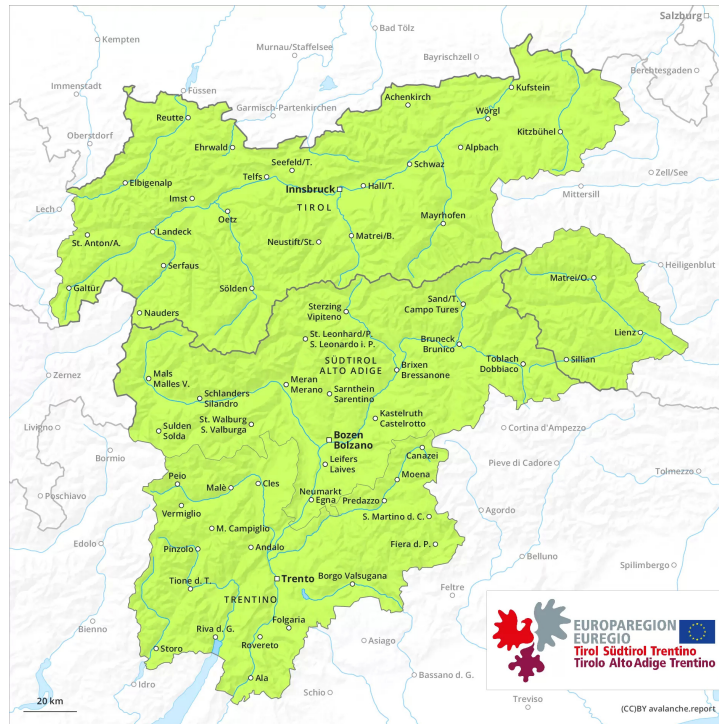
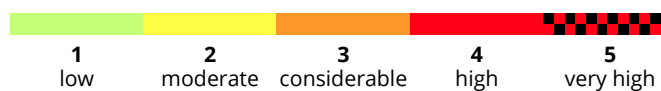
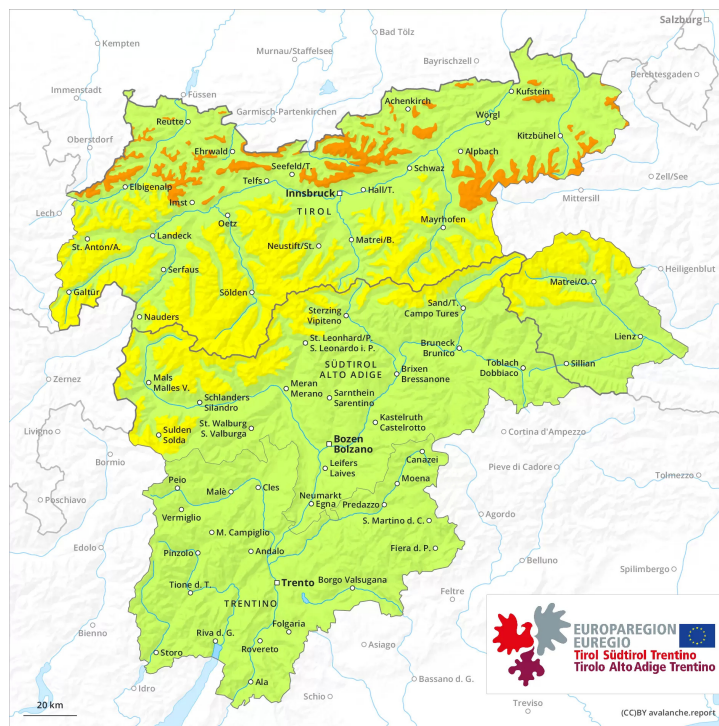




AM



PM



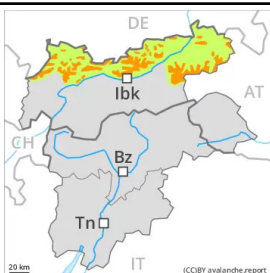
Danger Level 3 - Considerable

AM:



Tendency: Constant avalanche danger →
on Friday 21 01 2022

PM:



Tendency: Constant avalanche danger →
on Friday 21 01 2022

As the day progresses as a consequence of new snow and strong wind there will be an increase in the avalanche danger.

As a consequence of new snow and a strong wind, avalanche prone wind slabs will form in the course of the day in particular above the tree line. Even single skiers can release avalanches with increasing likelihood, including medium-sized ones. The avalanche prone locations are to be found on steep shady slopes and in gullies and bowls, and behind abrupt changes in the terrain, in the regions exposed to heavier precipitation in particular in places that are protected from the wind.

Additionally in very isolated cases avalanches can also be released in the old snowpack. Caution is to be exercised in areas where the snow cover is rather shallow.

Snowpack

Danger patterns

dp.6: cold, loose snow and wind

dp.4: cold following warm / warm following cold

At elevated altitudes snow depths vary greatly, depending on the influence of the wind. The old snowpack will be subject to considerable local variations. The wind will be strong to storm force over a wide area. In some localities up to 20 cm of snow will fall. The wind will transport the fresh and old snow. The fresh snow and the wind slabs to be found especially adjacent to riddgelines are lying on soft layers on steep shady slopes above the tree line, in particular in places that are protected from the wind.

In very isolated cases weak layers exist in the centre of the snowpack. This applies in particular on very steep shady slopes above approximately 2400 m.

At low and intermediate altitudes less snow than usual is lying.

Tendency

Hardly any decrease in avalanche danger.

Danger Level 2 - Moderate

AM:



Tendency: Constant avalanche danger
on Friday 21 01 2022 →

PM:



Tendency: Constant avalanche danger
on Friday 21 01 2022 →

Fresh wind slabs require caution.

As a consequence of a strong wind, sometimes avalanche prone wind slabs will form on Thursday in particular at elevated altitudes. They are to be evaluated with care and prudence especially in steep terrain. The avalanche prone locations are to be found on very steep shady slopes above approximately 2200 m and in gullies and bowls, and behind abrupt changes in the terrain. Additionally in very isolated cases avalanches can also be released in the old snowpack. Caution is to be exercised in areas where the snow cover is rather shallow.

Apart from the danger of being buried, restraint should be exercised as well in view of the danger of avalanches sweeping people along and giving rise to falls.

Snowpack

Danger patterns

dp.6: cold, loose snow and wind

dp.4: cold following warm / warm following cold

On Thursday the wind will be strong to storm force over a wide area. In the north and in the northeast up to 10 cm of snow will fall. The wind will transport the fresh and old snow. The fresh wind slabs will be deposited on soft layers in particular on west to north to southeast facing aspects above approximately 2200 m. The old snowpack will be subject to considerable local variations.

In very isolated cases weak layers exist in the centre of the snowpack. This applies in particular on very steep shady slopes above approximately 2400 m.

At low and intermediate altitudes less snow than usual is lying.

Tendency

Fresh wind slabs require caution. As a consequence of falling temperatures and the strong northerly wind, the snow drift accumulations will increase in size during the next few days. In the regions exposed to snowfall this applies in particular.

Danger Level 1 - Low



Tendency: Constant avalanche danger →
on Friday 21 01 2022

A generally favourable avalanche situation will prevail.

The snowpack will be generally well bonded. As a consequence of a sometimes strong wind from northerly directions, mostly small wind slabs will form at elevated altitudes. The fresh wind slabs are to be evaluated with care and prudence in steep terrain. In very isolated cases avalanches can be triggered in the faceted old snow and reach medium size, in particular on very steep shady slopes, and on wind-loaded slopes. Apart from the danger of being buried, restraint should be exercised as well in view of the danger of avalanches sweeping people along and giving rise to falls.

Snowpack

As a consequence of mild temperatures and solar radiation the snowpack settled. Field observations and stability tests have confirmed this situation.

Fresh and older wind slabs can be released in isolated cases, but mostly only by large additional loads, in particular on very steep shady slopes and at elevated altitudes. In very isolated cases weak layers exist in the centre of the snowpack, in particular on very steep shady slopes.

At elevated altitudes snow depths vary greatly, depending on the influence of the wind. On sunny slopes below approximately 2200 m only a little snow is lying.

Tendency

A generally favourable avalanche situation will prevail.

Danger Level 1 - Low



Tendency: Constant avalanche danger →
on Friday 21 01 2022

Wind slabs require caution.

As a consequence of a sometimes strong wind, mostly small wind slabs will form on Thursday in particular at elevated altitudes. The fresh and older wind slabs are in some cases prone to triggering. They are to be evaluated with care and prudence especially in steep terrain. Individual avalanche prone locations are to be found on very steep shady slopes above approximately 2200 m and in gullies and bowls, and behind abrupt changes in the terrain. Additionally in very isolated cases avalanches can also be released in the old snowpack. Caution is to be exercised in areas where the snow cover is rather shallow.

Apart from the danger of being buried, restraint should be exercised as well in view of the danger of avalanches sweeping people along and giving rise to falls.

Snowpack

Danger patterns

dp.6: cold, loose snow and wind

dp.4: cold following warm / warm following cold

Field observations and stability tests have confirmed a widespread favourable avalanche situation.

On Thursday the wind will be strong over a wide area. In the north and in the northeast up to 5 cm of snow will fall. The wind will transport the loosely bonded old snow. The fresh wind slabs will be deposited on soft layers in particular on west to north to east facing aspects above approximately 2200 m.

In very isolated cases weak layers exist in the centre of the snowpack. This applies in particular on very steep shady slopes above approximately 2400 m.

At elevated altitudes snow depths vary greatly, depending on the influence of the wind. Over a wide area less snow than usual is lying.

Tendency

Fresh wind slabs require caution. As a consequence of falling temperatures and the strong northerly wind, the snow drift accumulations will increase in size during the next few days. In the regions exposed to snowfall this applies in particular in the north and in the northeast as well as. In the other regions the avalanche danger is a little lower.