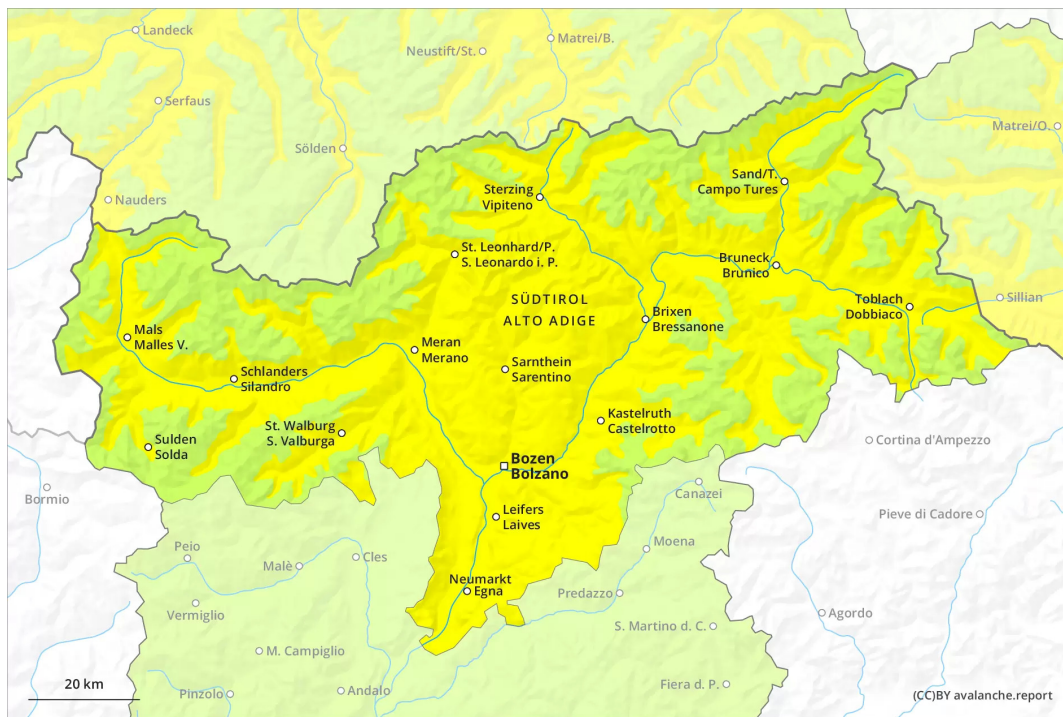




AM



PM



Danger Level 2 - Moderate

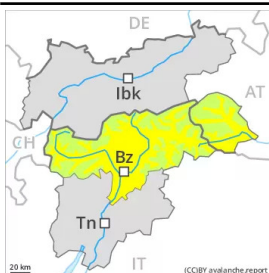
AM:



Tendency: Increasing avalanche danger
on Tuesday 15 03 2022



PM:



Tendency: Increasing avalanche danger
on Tuesday 15 03 2022



Gradual increase in danger of wet and gliding avalanches in the course of the day.

The small wind slabs of Sunday can be released even by a single winter sport participant on steep shady slopes at elevated altitudes. Individual avalanche prone locations are to be found especially adjacent to ridgelines and in pass areas. They are to be evaluated with care and prudence in particular in terrain where there is a danger of falling.

Extremely steep shady slopes are to be traversed by snow sport participants one at a time.

During the day:

From midday as a consequence of warming during the day and solar radiation there will be a gradual increase in the danger of wet avalanches to level 2 (moderate). This applies on steep east, south and west facing slopes below approximately 2600 m.

In addition the danger of gliding avalanches will increase, in particular in the regions with a lot of snow. Avalanches can reach medium size.

Snowpack

Danger patterns

dp.10: springtime scenario

Shady slopes:

The rather small wind slabs of Sunday are bonding only slowly with the old snowpack on steep shady slopes at elevated altitudes.

The upper section of the snowpack is soft; its surface consists of faceted crystals.

Steep sunny slopes, below approximately 2600 m:

The surface of the snowpack has frozen to form a strong crust and will soften earlier than the day before.

Sunshine and high temperatures will give rise from the middle of the day to increasing and thorough



wetting of the snowpack. In areas where the snow cover is rather shallow the snowpack will soften more quickly.

Tendency

Further increase in danger of wet avalanches as a consequence of warming.