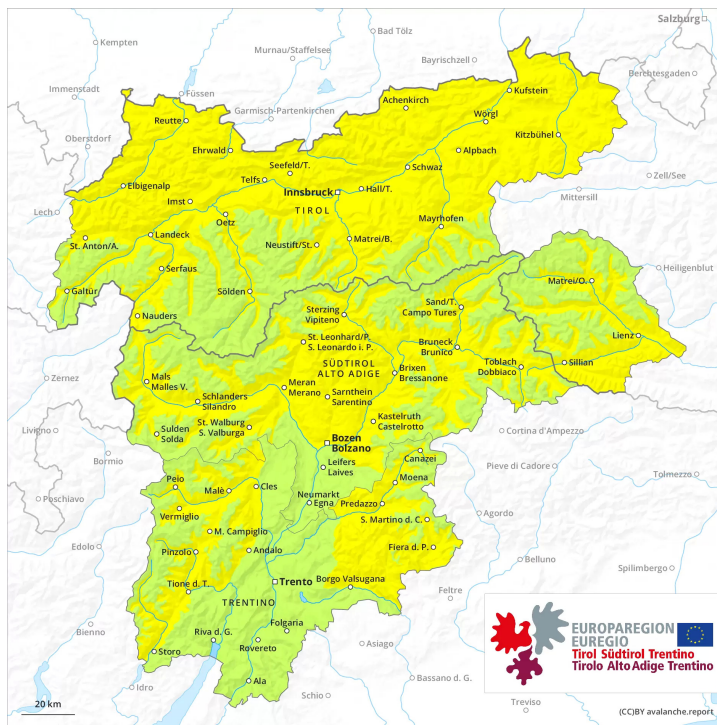
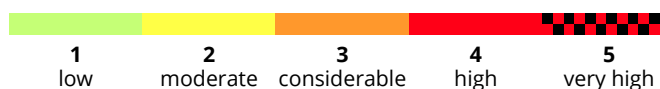
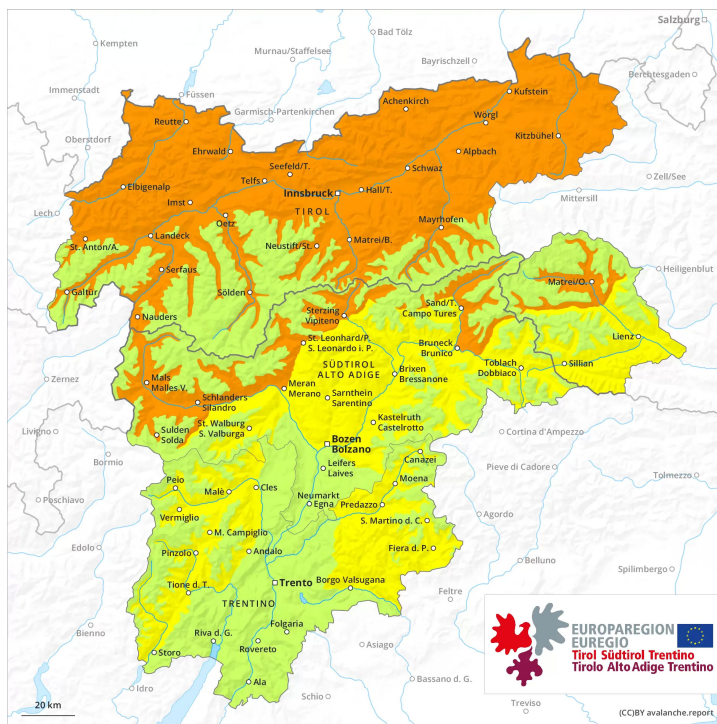




**AM**

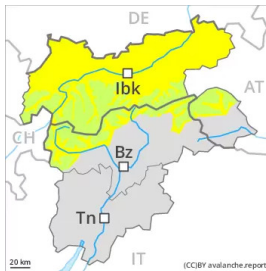
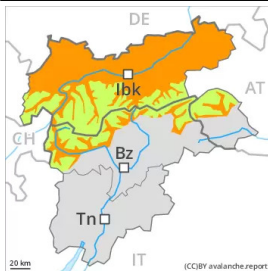


**PM**





## Danger Level 3 - Considerable

**AM:****Tendency: Decreasing avalanche danger**  
on Friday 18 03 2022**PM:****Tendency: Decreasing avalanche danger**  
on Friday 18 03 2022

The avalanche conditions are spring-like.

The early morning will see sometimes favourable avalanche conditions for a short time. The danger of wet and gliding avalanches will already increase in the late morning. As the day progresses more frequent medium-sized and, in isolated cases, large wet and gliding avalanches are possible. This applies especially on steep sunny slopes below approximately 2800 m, as well as in all aspects at intermediate altitudes. Caution is to be exercised in particular in areas where the snow cover is rather shallow. Here the snowpack is weaker. Wet avalanches can as before be released, even by a single winter sport participant and reach dangerously large size. Backcountry tours should be started early and concluded timely.

## Snowpack

**Danger patterns**

dp.10: springtime scenario

dp.2: gliding snow

The surface of the snowpack is frozen, but not to a significant depth and will soften quickly. Sunshine and high temperatures will give rise as the day progresses to rapid and thorough wetting of the snowpack in particular on steep sunny slopes below approximately 2800 m. In areas where the snow cover is rather shallow the snowpack will soften more quickly.

The small wind slabs of the weekend are now only very rarely prone to triggering.

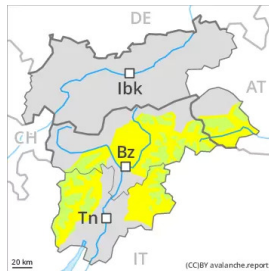
Snow depths vary greatly, depending on the influence of the wind. In particular in the south as well as at low and intermediate altitudes only a little snow is now lying.

## Tendency

Slight decrease in danger of wet avalanches as the temperature drops.



## Danger Level 2 - Moderate



**Tendency: Decreasing avalanche danger**  
on Friday 18 03 2022



### The avalanche conditions are spring-like.

The early morning will see quite favourable avalanche conditions for a short time. The danger of wet and gliding avalanches will already increase in the late morning. As the day progresses more frequent medium-sized wet and gliding avalanches are possible. This applies especially on steep sunny slopes below approximately 2600 m, as well as in all aspects at intermediate altitudes. Caution is to be exercised in particular in areas where the snow cover is rather shallow. Here the snowpack is weaker. Wet avalanches can as before be released, even by a single winter sport participant and reach dangerously large size. Backcountry tours should be started early and concluded timely.

### Snowpack

#### Danger patterns

dp.10: springtime scenario

dp.2: gliding snow

The surface of the snowpack is frozen, but not to a significant depth and will soften quickly. Sunshine and high temperatures will give rise as the day progresses to rapid and thorough wetting of the snowpack in particular on steep sunny slopes below approximately 2600 m. In areas where the snow cover is rather shallow the snowpack will soften more quickly.

The small wind slabs of the weekend are now only very rarely prone to triggering.

Snow depths vary greatly, depending on the influence of the wind. In particular in the south as well as at low and intermediate altitudes only a little snow is now lying.

### Tendency

Slight decrease in danger of wet avalanches as the temperature drops.

## Danger Level 1 - Low



**Tendency: Constant avalanche danger** →  
on Friday 18 03 2022

Over a wide area from a snow sport perspective, insufficient snow is lying. Wet snow requires caution.

The surface of the snowpack will only just freeze and will already be soft in the early morning. Wet and gliding avalanches are possible as the day progresses, but they will be mostly small. The danger of gliding avalanches and moist snow slides will increase a little during the day. Caution is to be exercised in particular in areas where the snow cover is rather shallow. At the Latemar the avalanche prone locations are a little more prevalent and the danger is greater.

### Snowpack

#### Danger patterns

dp.10: springtime scenario

As a consequence of mild temperatures and high relative humidity the snowpack can not consolidate during the night. The surface of the snowpack will freeze very little. This situation will give rise from the early morning to rapid and thorough wetting of the snowpack in particular on steep sunny slopes. In areas where the snow cover is rather shallow the snowpack will soften more quickly.

In particular on steep sunny slopes as well as at low and intermediate altitudes only a little snow is now lying.

### Tendency

Wet avalanches are still possible.